

CCW TO NNS COMPONENTS VALV CC237

BLOCK	CONTACT	POSITION			USE
		CLOSE	AUTO	OPEN	
A	NC(1)		X	X	SP
A	NO(2)	X			CONT
B	NC(3)	X	X		CONT
B	NO(4)			X	CONT

SPRING RETURN TO AUTO
X-DENOTE CONTACT CLOSED
GE CAT # CR2940U5203E

INFORMATION
THIS DOCUMENT IS
SUBJECT TO REVISION
WITHOUT NOTIFICATION
TO THE USER OF THIS
COPY

33-CC237

CONTACT	VALVE POSITION		USE
	CLOSE	OPEN	
1			THIS DWG.
2			THIS DWG.
3			THIS DWG.
4			THIS DWG.
5			SPARE
6			SPARE
7			THIS DWG.
8			THIS DWG.
9			SPARE
10			SPARE
11			SPARE
12			SPARE
13			SPARE
14			SPARE
15			THIS DWG.
16			SPARE
17	OPENS ON MECH. OVERLOAD ON CLOSING		THIS DWG.
18	OPENS ON MECH. OVERLOAD ON OPENING		THIS DWG.

— DENOTES CONTACT CLOSED

- REFERENCE DRAWINGS
- 0-E-0103 - ELECT. WIRING STANDARDS & SYMBOLS
 - 1-E-3181 - SH. 8 - COMPONENT COOLING WATER TO COMPONENT VALVE NNS LOGIC DIAGRAM
 - 1-E-6888 - CONTROL WIRING DIAGRAM CCW TO NNS COMPONENTS VALVE CC237

- LEGEND
- ⊖ AUXILIARY RELAY CABINET
 - ⊖/LSL-450TC - COMPONENT COOLING WATER SURGE TANK LEVEL SWITCH
 - ⊖/LSL-450TC-I - ISOL. RELAY
 - ⊖ ISOL. RELAY CABINET
 - ⊖ LOCAL CONTROL STATION
 - ⊖ 480V. MCC EIC1 COMPT. (R1) MECH. EQUIP. NO. 5R20TCC237

NUCLEAR SAFETY RELATED CLASS I E

PKG: 038 SUFF: 102 ACT: 581

DRAWING TITLE ELECTRICAL	CONTRACT NO. SCALE CR-0241 NONE
ELEMENTARY DIAGRAM	DRAWING NO 4-R-20
CCW TO NNS COMPONENTS VALVE CC237	1-E-4888-C

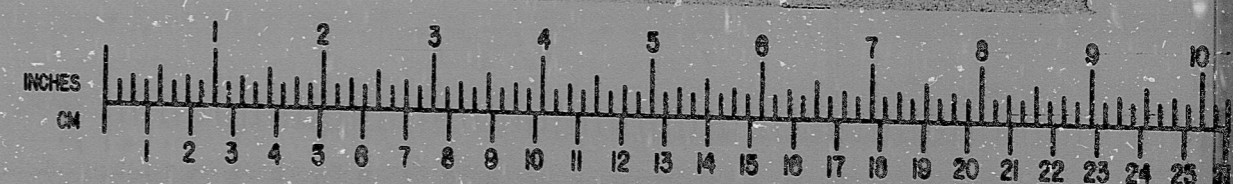
⊖ INFORMATION ⊖ PRELIMINARY ⊖ REVIEW ⊖ USE ⊖ CONSTRUCTION

REVISED / ISSUED FOR USE	KP	AK	AN	AS	AT	AV	AW	AX	AY	AZ
ISSUED FOR USE	DS	CS	SI	MM	MA	MS	MD	ME	MF	MG
ISSUED FOR REVIEW / COMMENT	A.3	WFE	CS	DS						
DATE	DESCRIPTION	BY	CHK	PROJ. ENGR.	DESIGN	DATE	DESCRIPTION	BY	CHK	PROJ. ENGR. MGR.

BROWN & ROOT INC.
MICROFILM SERVICES

Brown & Root Inc.
ENGINEERS, CONSULTANTS,
HOUSTON, TEXAS

SOUTH TEXAS
PROJECT



THURSDAY, JULY 10 1980

RIDS

8112100615

