

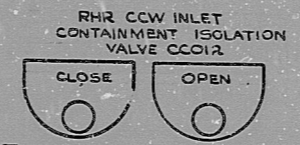
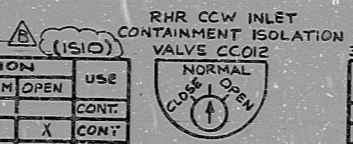
INFORMATION
THIS DOCUMENT IS
SUBJECT TO REVISION
WITHOUT NOTIFICATION
TO THE USER OF THIS
COPY

TO ANN CPOOL
CCW TRAIN A VLV.
OVERLOAD
4-4

33
11
BYPASS/INOPERATIVE
STATUS
(1-E-4895)

BLOCK	CONTACT	POSITION			USE
		CLOSE	NORM	OPEN	
A	NC (1)	X			CONT.
	NO (2)			X	CONT.
B	NC (3)	X			SP
	NO (4)			X	SP

SPRING RETURN TO NORMAL
X-DENOTES CONTACT CLOSED
G.E. CAT. # CR2140US203A



CS-L
PUSHBUTTON - MOMENTARY
CONTACT
GE CAT. # CR2340WAR2BCTYP

CONTACT	VALVE POSITION		USE
	CLOSE	OPEN	
1			THIS DWG.
2			SPARE
3			THIS DWG.
4			THIS DWG.
5			THIS DWG.
6			SPARE
7			THIS DWG.
8			THIS DWG.
9			SPARE
10			SPARE
11			THIS DWG.
12			SPARE
13			SPARE
14			SPARE
15			SPARE
16			SPARE
17			OPENS ON MECH. OVERLOAD ON CLOSING THIS DWG.
18			OPENS ON MECH. OVERLOAD ON OPENING THIS DWG.

- REFERENCE DRAWINGS
- 0-E-0105 - ELECT. WIRING STANDARDS / SYMBOLS
 - 1-E-3181 - SH. 9 - CCW CONTAINMENT ISOLATION MOV LOGIC DIAGRAM
 - 1-E-6890 - CONTROL WIRING DIAGRAM RHR CCW INLET CONTAINMENT ISOLATION VALVE CCO12

LEGEND TERA APERTURE CARD

480V MCC EIA2 COMPT. #2 MECH. EQUIP. NO. 2R201CCO12

NUCLEAR SAFETY RELATED CLASS I E

PKG: 038A SUFF: 102 ACT: 581

DRAWING TITLE: ELECTRICAL
ELEMENTARY DIAGRAM
RHR CCW INLET CONTAINMENT ISOLATION VALVE CCO12

CONTRACT NO/SCALE: CR-0241 NONE
DRAWING NO: 4-R-20
1-E-4895-B

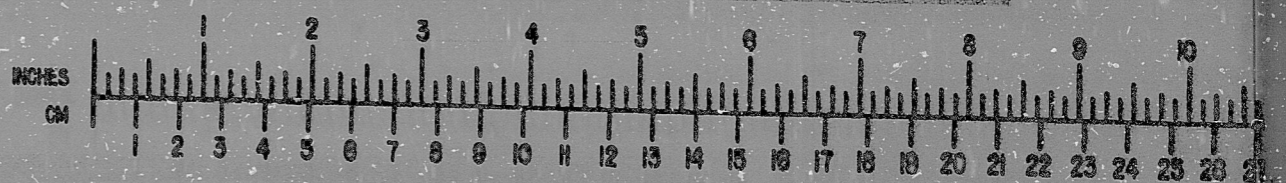
DATE: MAR 16 1979

DATE	DESCRIPTION	BY	CHK	ENG	PROJ	PROJ	NO	DATE	DESCRIPTION	BY	CHK	ENG	PROJ	PROJ	NO	DATE
	ISSUED FOR USE	DB	AMS													
	ISSUED FOR DESIGN COMMENT	A.S.	WEE													

Brown & Root Inc.
ENGINEERS-CONSTRUCTORS
HOUSTON, TEXAS

SOUTH TEXAS PROJECT

BROWN & ROOT INC. MICROFILM SERVICES



THURSDAY, AUG. 16 1979

RDS

8112100603

