

INFORMATION
THIS DOCUMENT IS
SUBJECT TO REVISION
WITHOUT NOTIFICATION
TO THE USER OF THIS
COPY

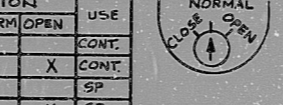
TO ANN CPOO1
CCW TRAIN & VLV
OVERLOAD
4-4

33
11
BYPASS/INOPERATIVE
STATUS
(1-E-6891)

BLOCK	CONTACT	POSITION		USE
		CLOSE	NORM OPEN	
A	NC (1)	X		CONT.
	NO (2)		X	CONT.
B	NC (3)	X		SP
	NC (4)		X	SP

SPRING RETURN TO NORMAL
X-DENOTES CONTACT CLOSED
G.E. CAT # CR2940US203A

RHR CCW OUTLET OUTSIDE
CONTAINMENT ISOLATION
VALVE CC050



RHR CCW OUTLET OUTSIDE
CONTAINMENT ISOLATION
VALVE CC050



CS-L
PUSHBUTTON-MOMENTARY
CONTACT
GE CAT # CR2940WA2028 (CTYP)

CONTACT	VALVE POSITION		USE
	CLOSE	OPEN	
1			THIS DWG.
2			SPARE
3			THIS DWG.
4			THIS DWG.
5			THIS DWG.
6			SPARE
7			THIS DWG.
8			THIS DWG.
9			SPARE
10			SPARE
11			THIS DWG.
12			SPARE
13			SPARE
14			SPARE
15			SPARE
16			SPARE
17			OPENS ON MECH. OVERLOAD ON CLOSING THIS DWG.
18			OPENS ON MECH. OVERLOAD ON OPENING THIS DWG.

REFERENCE DRAWINGS
0-E-0103 - ELECT. WIRING STANDARDS & SYMBOLS
1-E-3181-54.9 - CCW CONTAINMENT ISOLATION MOV LOGIC DIAGRAM
1-E-6891 - CONTROL WIRING DIAGRAM RHR CCW OUTLET OUTSIDE CONTAINMENT ISOLATION VALVE CC050

TERA
APERTURE
CARD

LEGEND

480V MCC (E1A2 COMPT.)
MECH. EQUIP. NO 2R201CC030

NUCLEAR SAFETY RELATED
CLASS 1E

PKG: 039A SUFF: 102 ACT: 581

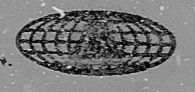
DRAWING TITLE ELECTRICAL	CONTRACT NO. SCALE CR-0241 NONE
ELEMENTARY DIAGRAM	DRAWING NO. 4-R-20
RHR CCW OUTLET OUTSIDE CTMT ISOL. VALVE CC050	1-E-4891-B

NO.	DATE	DESCRIPTION	BY	CHK	ENG	MGR	DATE	DESCRIPTION	BY	CHK	ENG	MGR
2	7/10/73	ISSUED FOR USE	DB	AM								
1	7/10/73	ISSUED FOR REVIEW & COMMENT	A.S.	HEE								

Brown & Root Inc.
ENGINEERS CONSTRUCTORS
HOUSTON, TEXAS

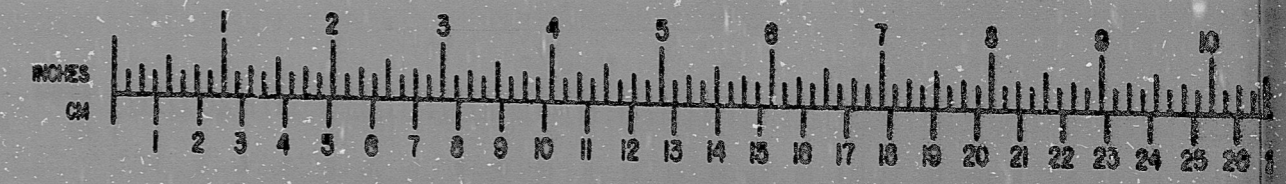
SOUTH TEXAS
PROJECT

INFORMATION PRELIMINARY REVIEW USE CONSTRUCTION



BROWN & ROOT INC.
MICROFILM SERVICES

THURSDAY, AUG. 16 1973



MICROFILMED MAR 1 8 1978

RIDS

8112100501

