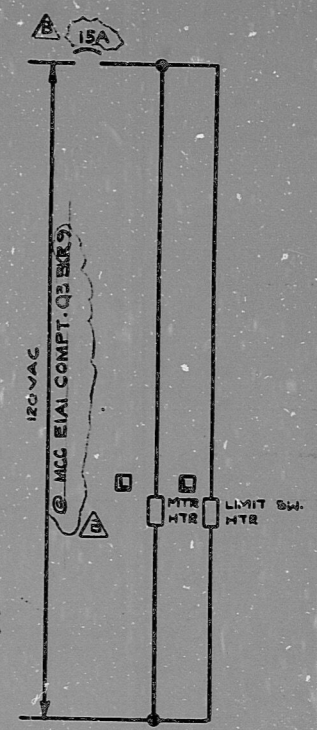


INFORMATION  
THIS DOCUMENT IS  
SUBJECT TO REVISION  
WITHOUT NOTIFICATION  
TO THE USER OF THIS  
COPY



TO ANN CPOOI  
CCW TRAIN A VLV.  
OVERLOAD  
4-4

BYPASS/INOPERATIVE  
STATUS  
(1-E-4896)

CS-MB (11573)

BLOCK	CONTACT	POSITION		USE
		CLOSE	NORM/OPEN	
A	NC(1)	X		CONT
	NO(2)		X	CONT
B	NC(3)	X		SP
	NO(4)		X	SP

SPRING RETURN TO NORMAL  
X-DENOTES CONTACT CLOSED  
G.E. CAT # CR294CUG203A

RCFC CCW  
OUTLET INSIDE  
CONTAINMENT ISOL.  
VALVE CC066

33-CC066

CONTACT	VALVE POSITION		USE
	CLOSE	OPEN	
1			THIS DWG
2			SPARE
3			THIS DWG
4			THIS DWG
5			THIS DWG
6			SPARE
7			THIS DWG
8			THIS DWG
9			SPARE
10			SPARE
11			THIS DWG
12			SPARE
13			SPARE
14			SPARE
15			SPARE
16			SPARE
17			OPENS ON MECH. OVERLOAD ON CLOSING THIS DWG
18			OPENS ON MECH OVERLOAD ON OPENING THIS DWG

REFERENCE DRAWINGS

- 0-E-0105 - ELECT WIRING STANDARDS (SYMBOLS)
- 1-Z-3181-SH-11 - CCW CONTAINMENT ISOLATION MOV LOGIC DIAGRAM
- 1-E-6896 - CONTROL WIRING DIAGRAM RCFC CCW OUTLET INSIDE CONTAINMENT ISOL. VALVE CC066

TERA  
APERTURE  
CARD

LEGEND

⊠ - 480V MCC EIN COMPT (H2)  
MECH. EQUIP NR 2R20ITCC066

**NUCLEAR SAFETY RELATED CLASS IE**

PKG: 033A SUFF: 102 ACT: 581

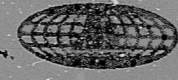
DRAWING TITLE ELECTRICAL	CONTRACT NO SCALE CR-0241 NONE
RCFC CCW OUTLET INSIDE CONTAINMENT ISOL VV CC066	DRAWING NO 4-R-20
-E-4896-B	

INFORMATION  PRELIMINARY  REVIEW  USE  CONSTRUCTION

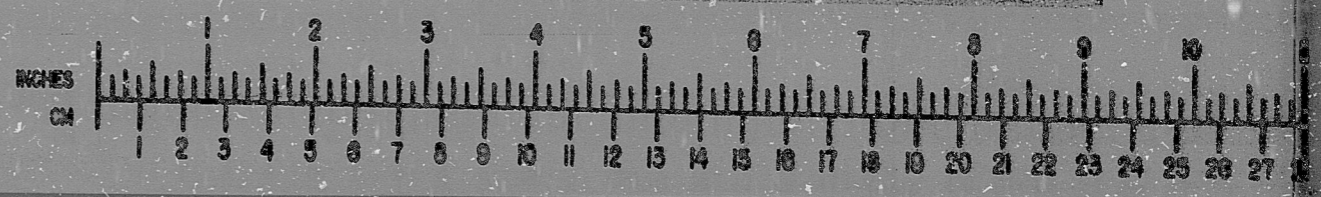
DATE	DESCRIPTION	BY	CHK	PROJ	PROJ	DATE	DESCRIPTION	BY	CHK	PROJ	PROJ	DATE
	ISSUED FOR USE	DB	AM									
	ISSUED FOR REVIEW (COMMENT)	JAN	HEE		DS							

**Brown & Root Inc.**  
ENGINEERS CONSTRUCTORS  
HOUSTON, TEXAS

**SOUTH TEXAS PROJECT**



**BROWN & ROOT INC.**  
MICROFILM SERVICES



THURSDAY, AUG. 16 1975

RIDS

8112100599

