

INFORMATION
THIS DOCUMENT IS
SUBJECT TO REVISION
WITHOUT NOTIFICATION
TO THE USER OF THIS
COPY

TO ANN CPOOL
CCW TRAIN A V.V.
OVERLOAD
4-4

BLOCK	CONTACT	POSITION		USE
		CLOSE	OPEN	
A	NC (1)	X		CONT
	NO (2)		X	CONT
B	NC (3)	X		SP
	NO (4)		X	SP

SPRING RETURN TO NORMAL
X-DENOTES CONTACT CLOSED
G.E. CAT # CR2940US203A

33
BYPASS/INOPERATIVE
STATUS
(1-2-4-4)

RHR CCW
OUTLET INSIDE
CONTAINMENT ISOL
VALVE CC049

CONTACT	VALVE POSITION		USE
	CLOSE	OPEN	
1			THIS DWG
2			SPARE
3			THIS DWG
4			THIS DWG
5			THIS DWG
6			SPARE
7			THIS DWG
8			THIS DWG
9			SPARE
10			SPARE
11			THIS DWG
12			SPARE
13			SPARE
14			SPARE
15			SPARE
16			SPARE
17			OPENS ON MECH. OVERLOAD ON CLOSING THIS DWG
18			OPENS ON MECH. OVERLOAD ON OPENING THIS DWG

- REFERENCE DRAWINGS
- 0-E-0105 - ELECT WIRING STANDARDS & SYMBOLS
 - 1-2-3181-SH-11 - CCW CONTAINMENT ISOLATION MOV
LOGIC DIAGRAM
 - 1-E-4897 - CONTROL WIRING DIAGRAM RHR
CCW OUTLET INSIDE CONTAINMENT
ISOL VALVE CC049

LEGEND

480V MCC EIAI COMPTR B
MECH. EQUIP NO 2R201CC049

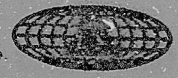
NUCLEAR SAFETY RELATED
CLASS I/E

PKG: 038A	SUFF: 102	ACT: 581
DRAWING TITLE ELECTRICAL		CONTRACT NO SCALE CR-0241 NONE
ELEMENTARY DIAGRAM		DRAWING NO 4-R-20
RHR CCW OUTLET INSIDE CONTAINMENT ISOL. V.V. CC049		1-E-4897-B

DATE	DESCRIPTION	BY	CHK	ENG	MGR	DATE	DESCRIPTION	BY	CHK	ENG	MGR
	ISSUED FOR USE	DB	AM								
	ISSUED FOR REVIEW & COMMENT	DAV	WFE								

Brown & Root Inc.
ENGINEERS CONSTRUCTORS
HOUSTON, TEXAS

SOUTH TEXAS
PROJECT



BROWN & ROOT INC.
MICROFILM SERVICES

THURSDAY, AUG. 16 1979



8.5"

11"

17"

RIDS

8112100596

