

INFORMATION
THIS DOCUMENT IS
SUBJECT TO REVISION
WITHOUT NOTIFICATION
TO THE USER OF THIS
COPY

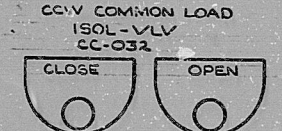
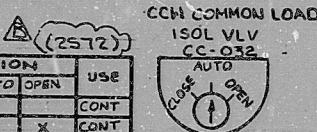
TO ANN CPOOZ
CCW TRAIN B VLV.
OVERLOAD
A-5

BLOCK	CONTACT	POSITION		USE
		CLOSE	OPEN	
A	NC (1)	X		CONT
	NO (2)		X	CONT
B	NC (3)	X		SP
	NO (4)		X	SP

SPRING RETURN TO AUTO
X-DENOTES CONTACT CLOSED
G.E. CAT # CR2940US203A

27 BYPASS / INOPERATIVE
STATUS
(1-E-626)

33 ESP STATUS
MONITORING
(1-E-626)



CS-L PUSHBUTTON - MOMENTARY
CONTACT
G.E. CAT # CR2940WA202BCTYP

CONTACT	VALVE POSITION		USE
	CLOSE	OPEN	
1			THIS DWG.
2			SPARE
3			THIS DWG.
4			THIS DWG.
5			THIS DWG.
6			SPARE
7			THIS DWG.
8			THIS DWG.
9			SPARE
10			SPARE
11			SPARE
12			SPARE
13			SPARE
14			SPARE
15			THIS DWG.
16			SPARE
17	OPENS ON MECH. OVERLOAD ON CLOSING		THIS DWG.
18	OPENS ON MECH. OVERLOAD ON OPENING		THIS DWG.

- REFERENCE DRAWINGS
- 0-E-0108 - ELECT WIRING STANDARDS
 - 1-E-3181 - SH.5 - CCW COMPONENTS ISOLATION VALVE LOGIC DIAGRAM
 - 1-E-6908 - CONTROL WIRING DIAGRAM CCW COMPONENT ISOLATION VALVE CC032

NOTES

1. CONTACTS CHANGE ON SAFETY INJECTION SIGNAL.

LEGEND

IRR004 - SOLID STATE PROTECTION SYSTEM - TRAIN "B" ACTUATION CABINET.

480V MCC IIB2 COMPT (G2) MECH. EQUIP. NO 3R2011CC032

NUCLEAR SAFETY RELATED CLASS I E

PKG 038A SUFF: 102 IACT: 581

DRAWING TITLE: ELECTRICAL
CONTRACT NO: CR-0241 SCALE: NONE

ELEMENTARY DIAGRAM
DRAWING NO: 4-R-20

CCW COMPONENT ISOLATION VALVE CC032
1-E-4908-B

DATE	DESCRIPTION	BY	CHK	PROJ	PROJ	DATE	DESCRIPTION	BY	CHK	PROJ	PROJ
	ISSUED FOR USE	DB	AM								
	ISSUED FOR REVIEW	A.S.	WEE								

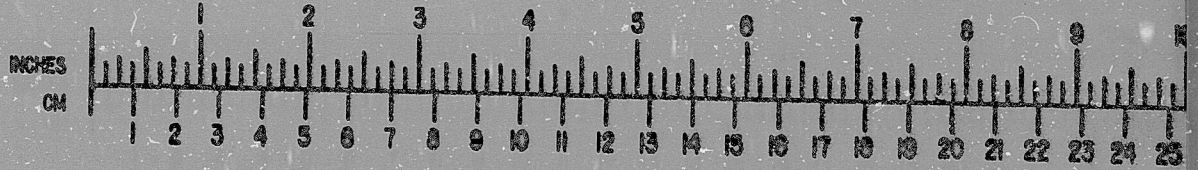
Brown & Root Inc.
ENGINEERS-CONSTRUCTORS
HOUSTON, TEXAS

SOUTH TEXAS PROJECT

INFORMATION PRELIMINARY REVIEW USE CONSTRUCTION

BROWN & ROOT INC.
MICROFILM SERVICES

WEDNESDAY, SEPT. 3 1979



11
8.5"

8.5"
11"

17"

RIDS

8112100584

