

CS-MB (1585) ESSENTIAL COOLING WATER PUMP NO. 1A

CONTACTS (HANDLE END)	START	AUTO	STOP	PULL TO LOCK	USE
1 IC 2C 2I				X	CONT
0-1-0-0-1-0-2			X	X	SP
3 3C 4C 4I			X		CONT
0-1-0-0-1-0-4		X			CONT
5 3C 6C 6I		X			SP
0-1-0-0-1-0-6	X				CONT
7 7C 8C 8I	X	X			CONT
0-1-0-0-1-0-8	X	X	X		CONT
9 3C 10C 10I				X	CONT
0-1-0-0-1-0-10			X	X	SP

SPRING RETURN TO AUTO
MAINTAINED CONTACTS IN PULL TO LOCK
X-DENOTES CONTACT CLOSED
G.E. SBM

CS/TEST ESSENTIAL COOLING WATER PUMP NO. 1A

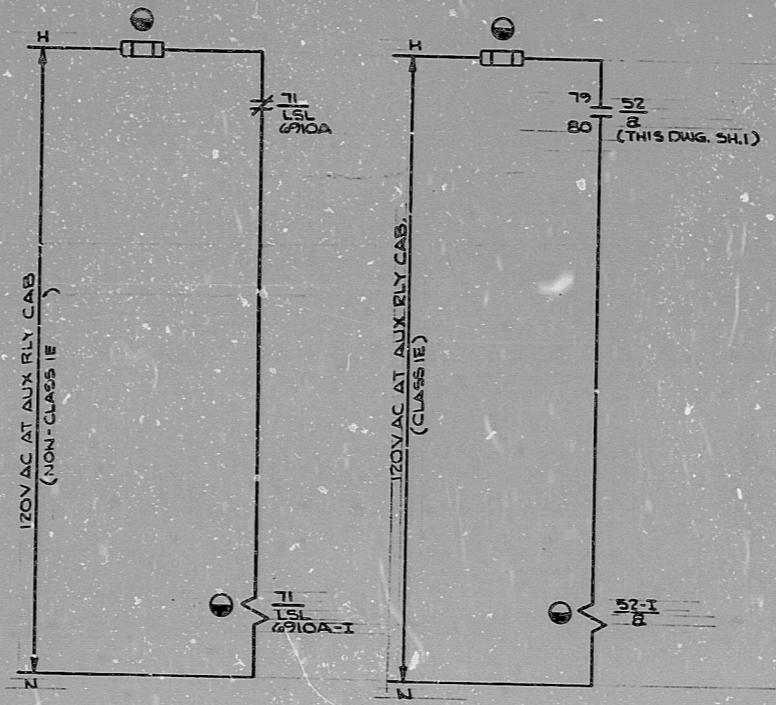
CONTACTS (HANDLE END)	CLOSE	NORM	TRIP	USE
1 IC 2C 2I			X	CONT
0-1-0-0-1-0-2	X			CONT

SPRING RETURN TO NORMAL
X-DENOTES CONTACT CLOSED
G.E. SBM

LCS-16945 ESSENTIAL COOLING WATER PUMP NO. 1A

CONTACTS (HANDLE END)	START	NORM	STOP	USE
1 IC 2C 2I			X	CONT
0-1-0-0-1-0-2	X			CONT
3 3C 4C 4I		X	X	SP
0-1-0-0-1-0-4	X	X		CONT

SPRING RETURN TO NORMAL
X-DENOTES CONTACT CLOSED
G.E. SBM



- REFERENCE DRAWINGS
- 0-E-0105 - ELECT. WIRING STANDARDS & SYMBOLS
 - 1-Z-3202-SH-1 - ESSENTIAL COOLING WATER
 - 1-Z-3203-SH-3 - PUMPS LOGIC DIAGRAM
 - 1-E-6945 - CONTROL WIRING DIAGRAM ESSENTIAL COOLING WATER PUMP NO. 1A
 - 52767-D-283 - SCHEM. DIAG. 4.16KV SWGR EIA CUB. T (GOULD) B&R FILE NO. E151X045GL1
 - 52767-E-297 - CONNECTION DIA. 4.16KV SWGR EIA (GOULD) CUB. T B&R FILE NO. E151X063GL1

- LEGEND
- 2 - TIME DELAY PICK-UP RELAY
 - 69 - PERMISSIVE START RELAY
 - 29X 69X1 - PERMISSIVE STOP RELAY
 - 7I/LSL 6910A-I - ISOL. RELAY
 - 52-I - ISOL. RELAY
 - 27 - CONTROL POWER NOT AVAILABLE RELAY
 - 74, 74-1, 74X - ALARM RELAYS
 - 7I/LSL 6910A - SCWPP 1A SCREENWELL LEVEL SW CONTACT CLOSING ON LOW LEVEL
 - ⊙ - AUXILIARY RELAY CAB.

INFORMATION
THIS DOCUMENT IS
SUBJECT TO REVISION
WITHOUT NOTIFICATION
TO THE USER OF THIS
COPY

TERA
APERTURE
CARD

4.16KV SWGR EIA CUB T
MECH. EQUIP. NO. 3R281PAIC1A

NUCLEAR SAFETY RELATED CLASS IE	
PKG: 004	SUFF: 052
ACT: 581	
DRAWING TITLE ELECTRICAL	CONTRACT NO. SCALE CR-0241 NONE
ELEMENTARY DIAGRAM	DRAWING NO. 4-R-28
ESSENTIAL COOLING WATER PUMP 1A	FE-4945-A-SHT 2

NO.	ISSUED FOR USE	DATE	BY	CHK	PROJ	PROJ	NO.	DESCRIPTION	BY	CHK	PROJ	PROJ	NO.	DESCRIPTION
A 1/24	ISSUED FOR USE	08	W.C.	W.C.	W.C.	W.C.								

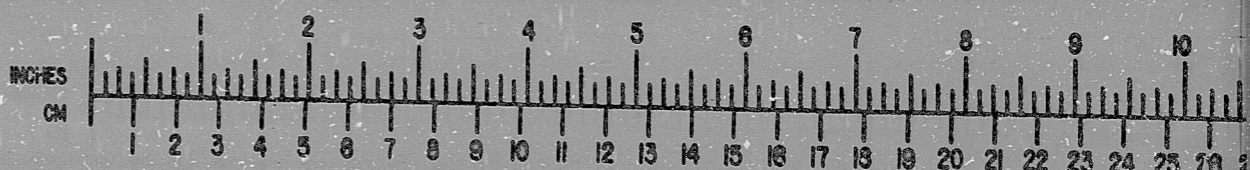
Brown & Root Inc.
ENGINEERS-CONSTRUCTORS
HOUSTON, TEXAS

**SOUTH TEXAS
PROJECT**

INFORMATION PRELIMINARY REVIEW USE CONSTRUCTION

BROWN & ROOT INC.
MICROFILM SERVICES

MONDAY, JAN. 31 1980



RIDS

812100529

