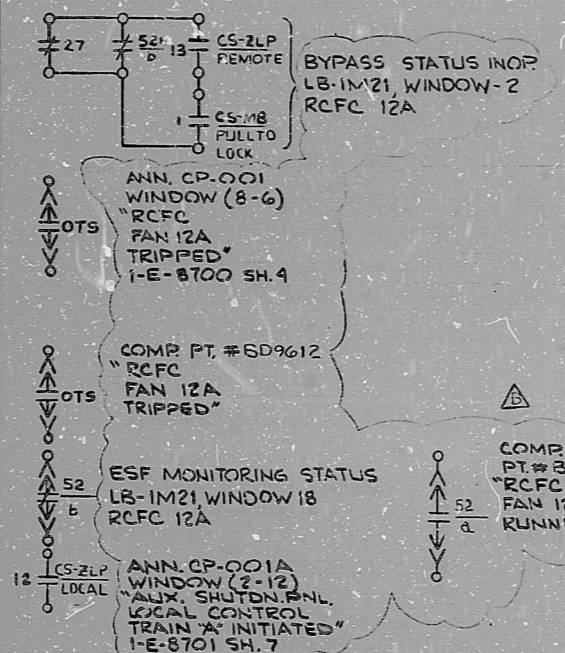


INFORMATION  
THIS DOCUMENT IS  
SUBJECT TO REVISION  
WITHOUT NOTIFICATION  
TO THE USER OF IT  
COPY



CS-MB (1598) RC BLDG HVAC RCFC 12A

CONTACTS (HANDLE END)	POSITION			USE
	START	AUTO	STOP	
1 IC 2 2C			X	CONT
2			X	CONT
3 3C 4 4C			X	SP
4		X		SP
5 5C 6 6C		X		SP
6	X			CONT
7 7C 8 8C	X			SP
8	X	X	X	CONT

SPRING RETURN TO AUTO  
X-DENOTES CONTACTS CLOSED  
GE TYPE SBM (SPECIAL)

CS-ZLP (ZLP-100) RC BLDG HVAC RCFC 12A

CONTACTS (HANDLE END)	POSITION			USE
	START	AUTO	STOP	
1 IC 2 2C			X	CONT
2		X		SP
3 3C 4 4C	X			CONT
4			X	SP

SPRING RETURN TO AUTO  
X-DENOTES CONTACTS CLOSED  
GE TYPE SBM (SPECIAL)

CS-ZLP (ZLP-100) RC BLDG HVAC RCFC 12A

CONTACTS (HANDLE END)	POSITION			USE
	LOCAL	REMOTE	USE	
1 IC 2 2C		X	CONT	
2	X		SP	
3 3C 4 4C		X	CONT	
4	X		CONT	
5 5C 6 6C		X	CONT	
6	X		CONT	
7 7C 8 8C		X	CONT	
8	X		CONT	
9 9C 10 10C		X	CONT	
10	X		CONT	
11 11C 12 12C		X	CONT	
12	X		CONT	
13 13C 14 14C		X	CONT	
14	X		SP	
15 15C 16 16C		X	CONT	
16	X		CONT	

MAINTAINED CONTACT  
X-DENOTES CONTACTS CLOSED  
GE SBM (SPECIAL)

- REFERENCE DRAWINGS
- 0-E-0105 - ELECTRICAL WIRING STANDARDS & SYMBOLS
  - 1-2-3430 - RC BLDG HVAC RCFC SH 1
  - I-E-7231 - CONTROL WIRING DIAGRAM RC BLDG HVAC RCFC 12A

- LEGEND
- 27-LOSS OF CONTROL PWR. RELAY
  - 420V-LOAD CENTER - EIA-COMPT. 3A
  - OTS - OVER CURRENT TRIP SW
  - SEQ - ESF LOAD SEQUENCER ACTUATION SIGNAL
  - MECH EQUIP N° 2VH1VFN002

TERA  
APERTURE  
CARD

NUCLEAR SAFETY RELATED  
CLASS I E

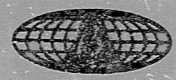
PKG: 019 SUFF: 100 ACT: 581

DRAWING TITLE ELECTRICAL	CONTRACT NO CR-0241	SCALE NONE
ELEMENTARY DIAGRAM	DRAWING NO 4-V-14	
RC BLDG. HVAC.		
RCFC 12A		

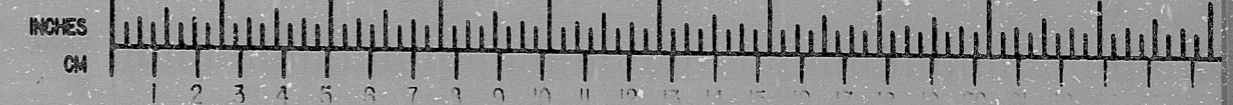
NO	DATE	DESCRIPTION	BY	CHK	PROJ	ENG	MG	DATE	DESCRIPTION	BY	CHK	PROJ	ENG	MG
3	11/17/77	REVISED AS NOTED	ESVD											
4	11/17/77	ISSUED FOR REVIEW & COMMENT	T.2											

**Brown & Root Inc.**  
ENGINEERS-CONSTRUCTORS  
HOUSTON, TEXAS

**SOUTH TEXAS PROJECT**



**BROWN & ROOT INC.**  
MICROFILM SERVICES



MICROFILMED BY 28 1978. INFORMATION PRELIMINARY REVIEW USE CONSTRUCTION

RIDS

8112100503

