

INFORMATION  
THIS DOCUMENT IS  
SUBJECT TO REVISION  
WITHOUT NOTIFICATION  
TO THE USER OF THIS  
COPY

- 49X CTMT. PEN. ISOL. VALVE OVERLOAD I-E-5246
- 33/15 ESF MONITORING STATUS LB-1M26, WINDOW-31 RCFC CHILL WATER CONTMT ISOL VALVE NOT FULL CLOSED
- 27 CONTROL PWR NOT AVAILABLE

BLOCK	CONTACT	POSITION (1518A)			USE
		CLOSE	ALTO	OPEN	
A	NC (1)	X			SP
	NO (2)			X	SP
B	NC (3)	X			CONT
	NO (4)			X	CONT

SPRING RETURN TO AUTO  
X - DENOTES CONTACTS CLOSED  
GE CAT # CR2940US203A

BYPASS STATUS IN OP  
LB-1M26, WINDOW-5  
RCFC CHILL WATER CONTMT  
ISOL VALVE CH268

TERA  
APERTURE  
CARD

CONTACT	VALVE POSITION		USE
	CLOSE	OPEN	
1			THIS DWG.
2			SP
3			THIS DWG.
4			THIS DWG.
5			SP
6			THIS DWG.
7			THIS DWG.
8			SP
9			SP
10			SP
11			SP
12			SP
13			SP
14			SP
15			THIS DWG.
16			SP
17	OPENS ON MECH. OVERLOAD ON CLOSING		THIS DWG.
18	OPENS ON MECH. OVERLOAD ON OPENING		THIS DWG.

- REFERENCE DRAWINGS
- O-E-0105 - ELECTRICAL WIRING STANDARDS & SYMBOLS
  - I-2-3491-SH10-R.C. BLDG. HVAC CTMT PEN. ISOL. VALVES LOGIC DIAGRAM
  - I-E-7247 - CONTROL WIRING DIAGRAM RC BLDG. HVAC CTMT PEN. ISOL. VALVE CH268

- LEGEND
- K836 - CONTAINMENT PHASE A ISOL. RELAY IRR-002SSPS-ACTUATION TRAIN A CAB.
  - 49X - MOTOR THERMAL OVERLOAD AUX RELAY
  - 27 - LOSS OF CONTROL PWR RELAY IRR-032-TRAINA ESF MONITORING CAB.

MECH EQUIP N# 2V14ITCH268  
480V-MCC-EIAT-COMPT.-A4

**NUCLEAR SAFETY RELATED**

**CLASS IE**

PKG: 019	SUFF: 100	ACT: 581
DRAWING TITLE ELECTRICAL	CONTRACT NO. CR-0241	SCALE NONE
ELEMENTARY DIAGRAM	DRAWING NO. 4-V-14	
R.C. BLDG. HVAC CTMT PEN. ISOLATION VALVE CH268	I-E-5247-B	

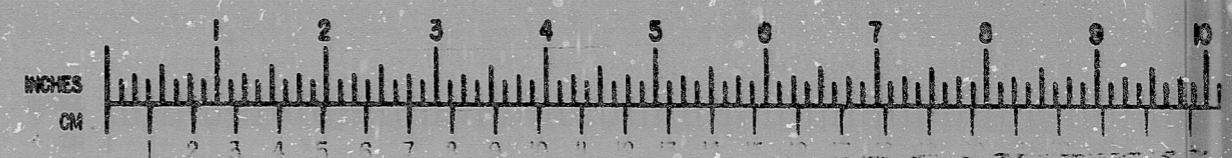
NO.	DATE	DESCRIPTION	BY	CHK	PROJ. ENG.	PROJ. MGR.
B	10/28/78	ISSUED FOR USE	VI			
A	10/28/78	ISSUE FOR REVIEW & COMMENT	T-2			

**Brown & Root Inc.**  
ENGINEERS CONSTRUCTORS  
HOUSTON, TEXAS

**SOUTH TEXAS PROJECT**

DATE: OCT 28 1978  
INFORMATION PRELIMINARY REVIEW USE CONSTRUCTION

**BROWN & ROOT INC.**  
MICROFILM SERVICES



8.5"  
11"  
17"

RIDS

8112100496

