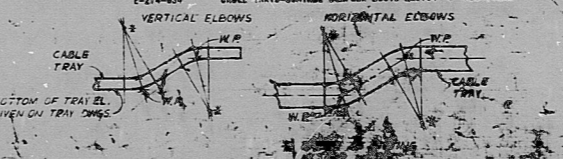


- NOTES:**
- 6.0 KV & 4.0 KV POWER TRAYS TO BE 24" WIDE BY 4" DEEP WITH 28" DIA. FITTED WITH 1/2" DIA. HOLES AT 12" ON CENTER.
 - 400 V. POWER TRAYS TO BE 24" WIDE BY 4" DEEP WITH 1/2" DIA. FITTED WITH 1/2" DIA. HOLES AT 12" ON CENTER.
 - CONTROL & INSULATION TRAYS TO BE 24" WIDE BY 4" DEEP WITH 1/2" DIA. FITTED WITH 1/2" DIA. HOLES AT 12" ON CENTER.
 - ELECTRICAL TRAYS TO BE 24" WIDE BY 4" DEEP WITH 1/2" DIA. FITTED WITH 1/2" DIA. HOLES AT 12" ON CENTER.
 - ALL TRAYS SHALL BE INSTALLED WITH THE CENTER LINE TO THE CENTER LINE OF THE TRAY.
 - ALL TRAYS SHALL BE INSTALLED WITH THE CENTER LINE TO THE CENTER LINE OF THE TRAY.
 - ALL TRAYS SHALL BE INSTALLED WITH THE CENTER LINE TO THE CENTER LINE OF THE TRAY.
 - ALL TRAYS SHALL BE INSTALLED WITH THE CENTER LINE TO THE CENTER LINE OF THE TRAY.
 - ALL TRAYS SHALL BE INSTALLED WITH THE CENTER LINE TO THE CENTER LINE OF THE TRAY.
 - ALL TRAYS SHALL BE INSTALLED WITH THE CENTER LINE TO THE CENTER LINE OF THE TRAY.
 - ALL TRAYS SHALL BE INSTALLED WITH THE CENTER LINE TO THE CENTER LINE OF THE TRAY.
 - ALL TRAYS SHALL BE INSTALLED WITH THE CENTER LINE TO THE CENTER LINE OF THE TRAY.
 - ALL TRAYS SHALL BE INSTALLED WITH THE CENTER LINE TO THE CENTER LINE OF THE TRAY.
 - ALL TRAYS SHALL BE INSTALLED WITH THE CENTER LINE TO THE CENTER LINE OF THE TRAY.
 - ALL TRAYS SHALL BE INSTALLED WITH THE CENTER LINE TO THE CENTER LINE OF THE TRAY.
 - ALL TRAYS SHALL BE INSTALLED WITH THE CENTER LINE TO THE CENTER LINE OF THE TRAY.

- REFERENCES:**
- E-214-010
 - E-214-013
 - E-214-014
 - E-214-021
 - E-214-022
 - E-214-023
 - E-214-024
 - E-214-025
 - E-214-026
 - E-214-027
 - E-214-028
 - E-214-029
 - E-214-030
 - E-214-031
 - E-214-032
 - E-214-033
 - E-214-034
 - E-214-035
 - E-214-036
 - E-214-037
 - E-214-038
 - E-214-039
 - E-214-040
 - E-214-041
 - E-214-042
 - E-214-043
 - E-214-044
 - E-214-045
 - E-214-046
 - E-214-047
 - E-214-048
 - E-214-049
 - E-214-050
 - E-214-051
 - E-214-052
 - E-214-053
 - E-214-054
 - E-214-055
 - E-214-056
 - E-214-057
 - E-214-058
 - E-214-059
 - E-214-060
 - E-214-061
 - E-214-062
 - E-214-063
 - E-214-064
 - E-214-065
 - E-214-066
 - E-214-067
 - E-214-068
 - E-214-069
 - E-214-070
 - E-214-071
 - E-214-072
 - E-214-073
 - E-214-074
 - E-214-075
 - E-214-076
 - E-214-077
 - E-214-078
 - E-214-079
 - E-214-080
 - E-214-081
 - E-214-082
 - E-214-083
 - E-214-084
 - E-214-085
 - E-214-086
 - E-214-087
 - E-214-088
 - E-214-089
 - E-214-090
 - E-214-091
 - E-214-092
 - E-214-093
 - E-214-094
 - E-214-095
 - E-214-096
 - E-214-097
 - E-214-098
 - E-214-099
 - E-214-100



29-8-17
 Cable Tray 1000 Gal
 1000 EL 45-5" WEST
 214-211
 PDS

PRELIMINARY

NO.	REVISIONS
1	ISSUED FOR CONSTRUCTION
2	ISSUED FOR CONSTRUCTION
3	ISSUED FOR CONSTRUCTION
4	ISSUED FOR CONSTRUCTION
5	ISSUED FOR CONSTRUCTION
6	ISSUED FOR CONSTRUCTION
7	ISSUED FOR CONSTRUCTION
8	ISSUED FOR CONSTRUCTION
9	ISSUED FOR CONSTRUCTION
10	ISSUED FOR CONSTRUCTION

FLORIDA POWER CORPORATION
 ST. PETERSBURG, FLORIDA
 CHRISTY RIVER PLANT

9912130517

CF

7912130517

