

INFORMATION
THIS DOCUMENT IS
SUBJECT TO REVISION
WITHOUT NOTIFICATION
TO THE USER OF THIS
COPY

CS-MB (35105)

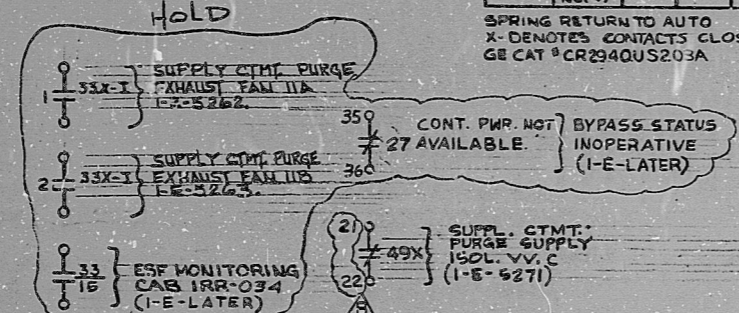
BLOCK	CONTACT	POSITION		USE
		CLOSE	OPEN	
A	NC(1)	X		CONT
	NO(2)		X	CONT
B	NC(3)	X		SP
	NO(4)		X	SP

SPRING RETURN TO AUTO
X-DENOTES CONTACTS CLOSED
GE CAT # CR2940US203A

SUPPL CTMT PURGE EXHAUST INSIDE CTMT ISOL V.V.F

33-HA004

CONTACT	VALVE POSITION		USE
	CLOSE	OPEN	
1			THIS DWG
2			SP
3			THIS DWG
4			THIS DWG
5			THIS DWG
6			SP
7			THIS DWG
8			THIS DWG
9			SP
10			SP
11			SP
12			SP
13			SP
14			SP
15			THIS DWG
16			THIS DWG
17			OPENS ON MECH. OVERLOAD ON CLOSING THIS DWG
18			OPENS ON MECH. OVERLOAD ON OPENING THIS DWG



- REFERENCE DRAWINGS
- 0-E-0105 ELECTRICAL WIRING STANDARDS AND SYMBOLS
 - 1-2-3499 SH2-RC BLDG HVAC SUPPLEMENTARY CTMT PURGE ISOLATION VALVE LOGIC DIAGRAM
 - 1-E-7213 CONTROL WIRING DIAGRAM RC BLDG HVAC SUPPLEMENTARY CTMT PURGE EXHAUST-INSIDE ISOL. V.V.F

- LEGEND
- ISOLATION RELAY CABINET
 - K833-CONTACTS ACTUATE ON CTMT VENT ISOL SIGNAL
 - 27-LOSS OF CONT. PWR RELAY
 - 33-VALVE POSITION ISOL RELAY
 - 49X-MTR THERMAL OLS AUX. RELAY
 - IRR-006-SOLID STATE PROTECTION TRAIN C ACTUATION CAB.
 - IRR-034-ESF MONITORING TRAIN C CAB.
- MECH EQUIP NO 2V141THA004
480V-MCC-EICI-COMPT-32

POOR ORIGINAL

TERA APERTURE CARD

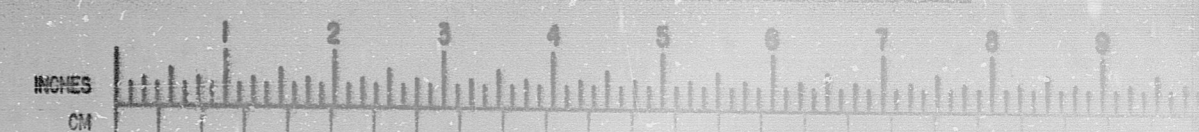
REV	DATE	DESCRIPTION	BY	CHK	APP	DATE	DESCRIPTION	BY	CHK	APP	DATE
B		REV. AS NOTED & ISSUED FOR USE	JL								
A		ISSUED FOR REVIEW / COMMENT	JL								

SOUTH TEXAS PROJECT

DRAWING TITLE: ELECTRICAL ELEMENTARY DIAGRAM
 SUPPL. CTMT PURGE EXHAUST INSIDE CTMT ISOL V.V.F

CONTRACT NO: CR-0241
 SCALE: NONE
 DRAWING NO: 4V-14
 T-E-5273-B

BROWN & ROOT INC. MICROFILM SERVICES



RIDS

8112100482

