

CIRCUIT NOTATION	
1	10
2	10
3	10
4	10
5	10
6	10
7	10
8	10
9	10
10	10
11	10
12	10
13	10
14	10
15	10
16	10
17	10
18	10
19	10
20	10

**PRELIMINARY**

LEGEND:

- 1. CIRCUIT NUMBER
  - 2. CONDUIT SIZE
  - 3. CONDUIT MATERIAL
- NO INDICATION = ALUMINUM  
 C = GULFITE  
 E = TRANSITE  
 P = PVC  
 M = STAINLESS STEEL  
 V = GALVANIZED  
 S = PLASTIC COATED BLACK IRON

FOR MORE THAN ONE CIRCUIT IN A CONDUIT, THE FIRST CIRCUIT IS THE LEAD CIRCUIT, WITH CONDUIT SIZE AS INDICATED. THE FOLLOWING CIRCUITS, GO VIA THE LEAD CONDUIT.

CONDUIT ATTACHED TO CABLE TRAY (CIRCUIT NUMBER & SIZE AS INDICATED)

4" WIRE CHANNEL ATTACHED TO CABLE TRAY (CIRCUIT NUMBER AS INDICATED)

- ⊙ - VOLT SENSITIVE
- ⊖ - CLOSED LIMIT SWITCH
- ⊕ - OPEN LIMIT SWITCH

INTERIM DRAWING  
 7-9-52  
 NUCLEAR SAMPLE ROOM  
 215-046  
 10/10/52  
 10/10/52

CHANGE IN PROGRESS  
 DUE TO  
 MAR./REL. 10-2-52

INSTALL FIRE SHIELD ON CONDUIT RUN. SEE DETAIL 13 DWG. E-214-061

NO.	REVISIONS
17	REVISED PER ECN 3639
16	REVISED AS INDICATED IN PLACE PER ECN 3601
15	REVISED AS INDICATED IN PLACE PER ECN 3601
14	REVISED AS INDICATED IN PLACE PER ECN 3601
13	REVISED AS INDICATED IN PLACE PER ECN 3601
12	REVISED AS INDICATED IN PLACE PER ECN 3601
11	REVISED AS INDICATED IN PLACE PER ECN 3601
10	REVISED AS INDICATED IN PLACE PER ECN 3601
9	REVISED AS INDICATED IN PLACE PER ECN 3601
8	REVISED AS INDICATED IN PLACE PER ECN 3601
7	REVISED AS INDICATED IN PLACE PER ECN 3601
6	REVISED AS INDICATED IN PLACE PER ECN 3601
5	REVISED AS INDICATED IN PLACE PER ECN 3601
4	REVISED AS INDICATED IN PLACE PER ECN 3601
3	REVISED AS INDICATED IN PLACE PER ECN 3601
2	REVISED AS INDICATED IN PLACE PER ECN 3601
1	REVISED AS INDICATED IN PLACE PER ECN 3601

**FLORIDA POWER CORPORATION**  
 ST. PETERSBURG, FLORIDA  
 CRYSTAL RIVER PLANT  
 UNIT NO. 3 855,000 KW

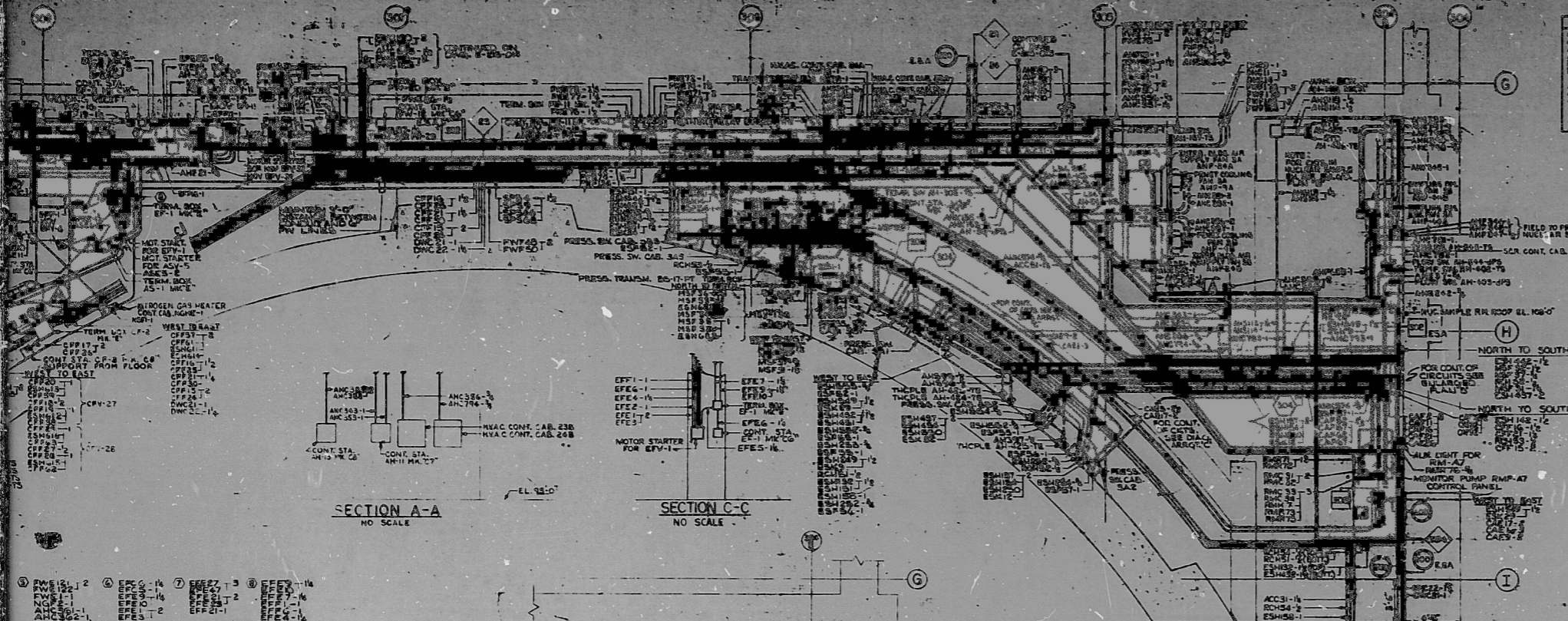
ELECTRICAL  
 CONDUIT LAYOUT  
 INTERMEDIATE BLDG. - EL. 95' - 8"

**PRELIMINARY**

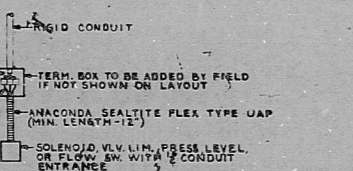
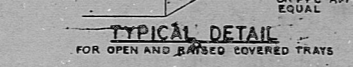
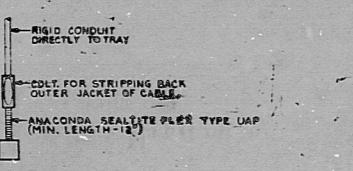
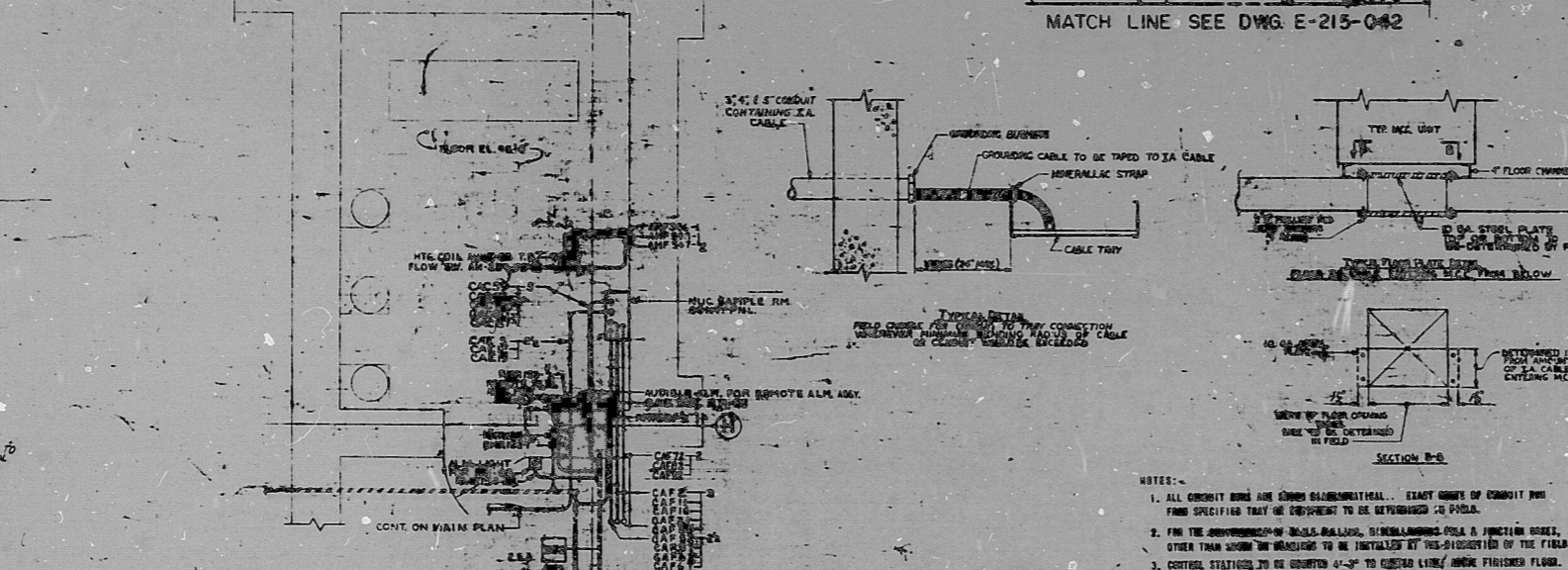
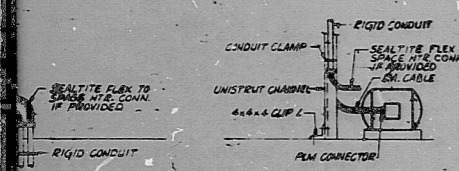
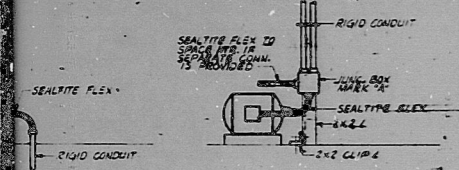
DESIGNED BY: GILLEN ASSOCIATES, INC.  
 ENGINEERS AND CONSULTANTS

APPROVED FOR CONSTRUCTION BY: FLORIDA POWER CORPORATION

DATE: 4-20-52  
 DRAWING NO.: E-215-046  
 SHEET NO.: 1 OF 1



- 1. EPE1-14
- 2. EPE2-14
- 3. EPE3-14
- 4. EPE4-14
- 5. EPE5-14
- 6. EPE6-14
- 7. EPE7-14
- 8. EPE8-14
- 9. EPE9-14
- 10. EPE10-14
- 11. EPE11-14
- 12. EPE12-14
- 13. EPE13-14
- 14. EPE14-14



- NOTES:
1. ALL CONDUIT RUNS ARE TO BE MADE IN ACCORDANCE WITH THE SPECIFICATIONS FOR CONDUIT AND FITTINGS SPECIFIED IN THE CONTRACT DOCUMENTS.
  2. THE CONDUIT SHALL BE INSTALLED IN ACCORDANCE WITH THE SPECIFICATIONS FOR CONDUIT AND FITTINGS SPECIFIED IN THE CONTRACT DOCUMENTS.
  3. CONDUIT SHALL BE INSTALLED IN ACCORDANCE WITH THE SPECIFICATIONS FOR CONDUIT AND FITTINGS SPECIFIED IN THE CONTRACT DOCUMENTS.
  4. ANACONDA FLEX CONDUIT, TYPE UAP, SHALL BE USED UNLESS OTHERWISE SPECIFIED.
  5. TRANSMITTERS, 600 MA, SHALL BE CONNECTED TO BUND CONDUIT WITH A MIN. LEADERS OF 1/2" GULFITE FLEX CONDUIT.
  6. ALUMINUM CONDUIT SHALL BE USED UNLESS OTHERWISE SPECIFIED AND SHALL BE COATED WITH A TAR BASE COATING.
  7. I.E. CABLE IN CONDUIT TO BE PERMANENTLY AT EQUIPMENT WITH PLS CONNECTIONS AND O.Z. CONNECTIONS OF 1/2" CONDUIT.
- REFERENCES:
- E-215-047 - CONDUIT LAYOUT INTERMEDIATE BUILDING EL. 110'-0"
  - E-215-048 - CONDUIT LAYOUT - GEN. OPERATOR EL. 110'-0" BOUTHWEST
  - E-215-049 - CABLE TRAY & CONDUIT SCHEDULE
- FOR PRESSURE BARRIERS IN THIS AREA REFER TO ECN 3639. FUTURE REVISION TO CONDUITS IN THIS AREA WILL REQUIRE REPLACEMENT OF PRESSURE BARRIERS AS SET FORTH IN THE AFOREMENTIONED ECN.



CF

7912130487

