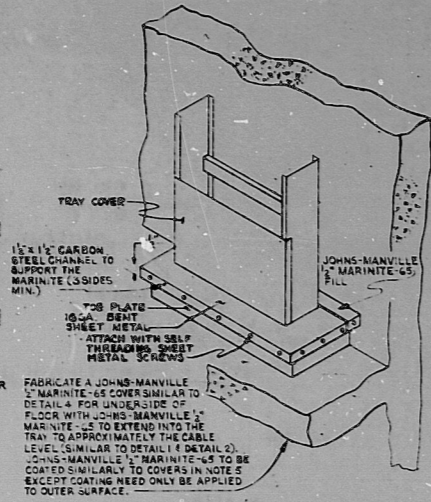
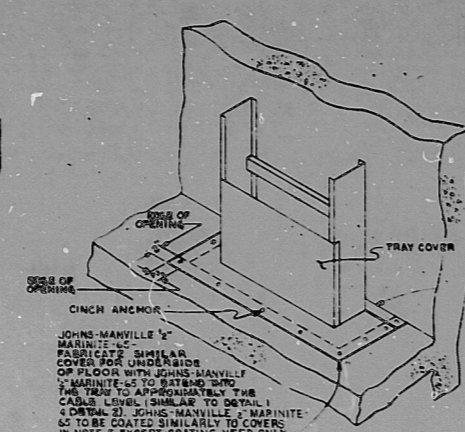


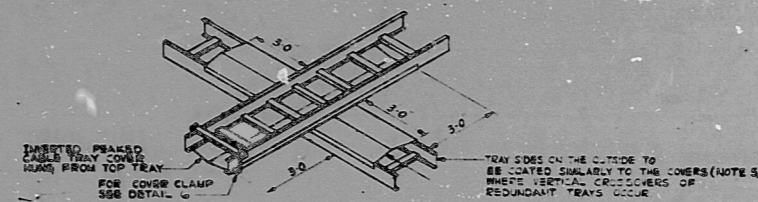
**DETAIL 2**  
TYPICAL HORIZONTAL FIRE STOP FOR 2 OR MORE TRAYS I REQ'D PER TRAY ON EACH FACE OF WALL  
NO SCALE



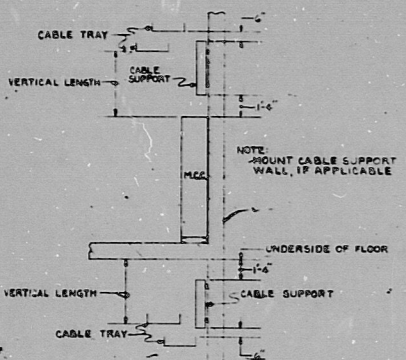
**DETAIL 3**  
TYPICAL VERTICAL FIRE STOP WITH TOE PLATE  
NO SCALE



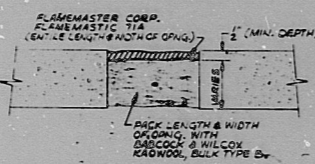
**DETAIL 4**  
TYPICAL FIRE STOP FINISH WITH FLOOR  
NO SCALE



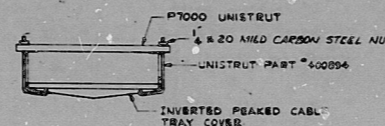
**DETAIL 5**  
TYPICAL HORIZONTAL FIRE BARRIER USING PEAKED CABLE TRAY COVERS  
NO SCALE



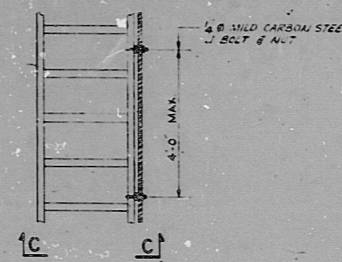
**SECTION B-B**  
TYPICAL POWER & CONTROL CABLE SUPPORT FOR VERTICAL LENGTHS OF 4'-0\"/>



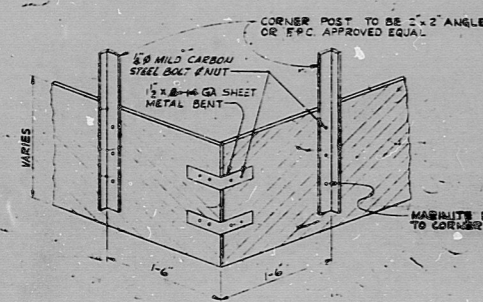
**DETAIL 11**  
TYPICAL CONTROL RM. FLOOR CABLE CHNL.  
NO SCALE



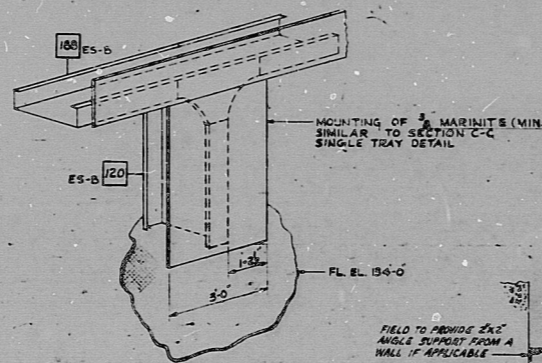
**DETAIL 6**  
NO SCALE



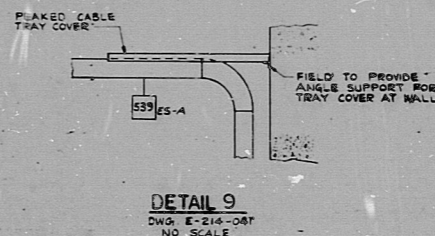
**PLAN**  
VERTICAL FIRE BARRIER  
NO SCALE



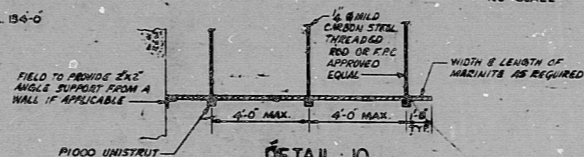
**DETAIL 7**  
TYPICAL VERTICAL CORNER SUPPORT  
NO SCALE



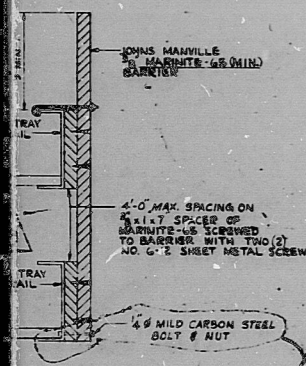
**DETAIL 8**  
DWG. K-216-031  
NO SCALE



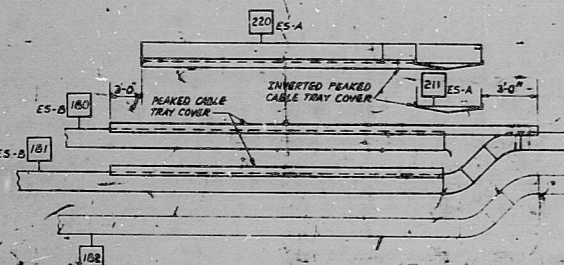
**DETAIL 9**  
DWG. E-216-087  
NO SCALE



**DETAIL 10**  
TYPICAL HORIZONTAL SUPPORT  
NO SCALE



CABLE TRAY DETAIL  
NO SCALE



**SECTION E-E**  
DWG. K-216-031  
NO SCALE

- NOTES:
1. ALL TRAYS AND CABLES SHALL BE PROTECTED WITH MARINITE-65 BARRIER, UNLESS OTHERWISE SPECIFIED.
  2. THE COVER SHALL BE 1/2\"/>
  - 3. THE COVER SHALL BE 1/2\"/>
  - 4. THE COVER SHALL BE 1/2\"/>
  - 5. THE COVER SHALL BE 1/2\"/>
  - 6. THE COVER SHALL BE 1/2\"/>
  - 7. THE COVER SHALL BE 1/2\"/>
  - 8. THE COVER SHALL BE 1/2\"/>
  - 9. THE COVER SHALL BE 1/2\"/>
  - 10. THE COVER SHALL BE 1/2\"/>

- NOTES: (CONTINUED)
1. COVER SHALL BE 1/2\"/>
  - 2. COVER SHALL BE 1/2\"/>
  - 3. COVER SHALL BE 1/2\"/>
  - 4. COVER SHALL BE 1/2\"/>
  - 5. COVER SHALL BE 1/2\"/>
  - 6. COVER SHALL BE 1/2\"/>
  - 7. COVER SHALL BE 1/2\"/>
  - 8. COVER SHALL BE 1/2\"/>
  - 9. COVER SHALL BE 1/2\"/>
  - 10. COVER SHALL BE 1/2\"/>

5	REVISED PER EFP 110.15. NO. 3 PLACES	11/23/52
6	REVISED PER EFP 1372 AS DTD. 7 PLACES	11/23/52
7	ADDED 01.316.11	11/23/52
8	REVISED AS INDICATED 4 PLACES	11/23/52
9	REVISED AS INDICATED 5 PLACES PER EFP 643	11/23/52
10	REVISED AS INDICATED 2 PLACES PER EFP 643	11/23/52
11	REVISED AS INDICATED 2 PLACES PER EFP 573	11/23/52
12	REVISED AS INDICATED 3 PLACES	11/23/52
13	ADDED HORIZONTAL & VERTICAL FIRE BARRIER SECTION	11/23/52
14	REVISED AS INDICATED 4 PLACES PER EFP 643	11/23/52
15	REVISED AS INDICATED 3 PLACES PER EFP 643	11/23/52
16	REVISED AS INDICATED 3 PLACES PER EFP 643	11/23/52
17	REVISED AS INDICATED 3 PLACES PER EFP 643	11/23/52
18	REVISED AS INDICATED 3 PLACES PER EFP 643	11/23/52
19	REVISED AS INDICATED 3 PLACES PER EFP 643	11/23/52
20	REVISED AS INDICATED 3 PLACES PER EFP 643	11/23/52

**FLORIDA POWER CORPORATION**  
IN JACKSONVILLE, FLORIDA  
**CRYSTAL RIVER PLANT**

UNIT NO. \_\_\_\_\_

**ELECTRICAL**  
CABLE ROOM

DATE: \_\_\_\_\_

DESIGNED BY: \_\_\_\_\_

CHECKED BY: \_\_\_\_\_

APPROVED BY: \_\_\_\_\_

CF

7912130480

