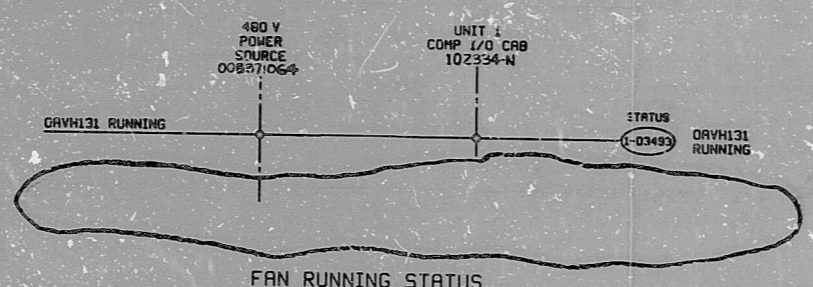


2 LMS 0-96-H



FAN RUNNING STATUS

SYSTEM	FAN RUNNING	480 POWER SOURCE	UNIT 1	
			COMP. I/O CAB. NO.	POINT ID
SRS	DRVH131	00B371064	10Z334-N	1-03493
SRS	DBVH131	00B381064	10Z334-N	1-03494
SRE	DRV308	00B371094	10Z334-N	1-03495
SRE	DBV308	00B381094	10Z334-N	1-03496
CLE	DRV307	10B313044	10Z334-N	1-03497
CLE	DBV307	10B323044	10Z334-N	1-03498

This drawing and the design it covers are the property of BECHTEL. They are hereby loaned and all the borrower's copies agreement that they are not to be reproduced, copied, altered, modified, or used except in the manner intended by the lender to the borrower.

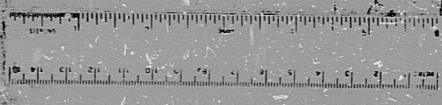
PRO APERTURE CARD

△									
△	4-27-82	DESIGN FREEZE ISSUE, DELETED UNIT 2 & REVISED AS NOTED	LC	HW	PC	DR			
△	5-1-82	REVISED AS NOTED	LC	HW	PC	DR			
△	7-4-79	ISSUED FOR CONSTRUCTION	LC	HW	PC	DR			
NO.	DATE	REVISIONS	BY	CHKD	APP'D	DATE	CHKD	APP'D	DATE
BRAND	NONE	REVISIONS	LK/SBB	BRAND	RCC				
BECHTEL SAN FRANCISCO									
PUBLIC SERVICE ELECTRIC AND GAS COMPANY HOPE CREEK GENERATING STATION									
LOGIC DIAGRAM AUXILIARY BLDG. - SERVICE AREA FAN RUNNING STATUS									
JOB No.		DRAWING No.		REV.					
10955		H-93-0 SHT 7		2					

S/U-GL

74X

I certify that the microfilm image contained on this microform were made in the normal and regular course of business. This is a true, correct and complete reproduction and replacement for and/or in lieu of original documents generated by the Bechtel group of companies.
Signed: DANNY Date: 4-27-82 Camera Type: MRG I
Camera Operator



RIDS

8307250602

