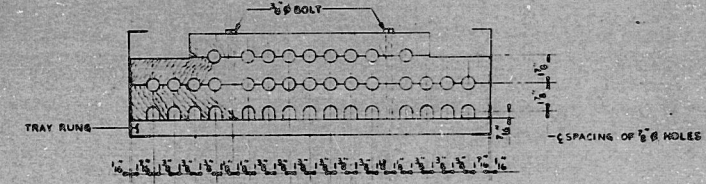
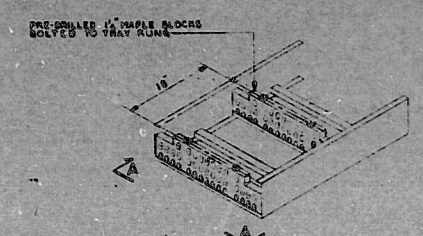
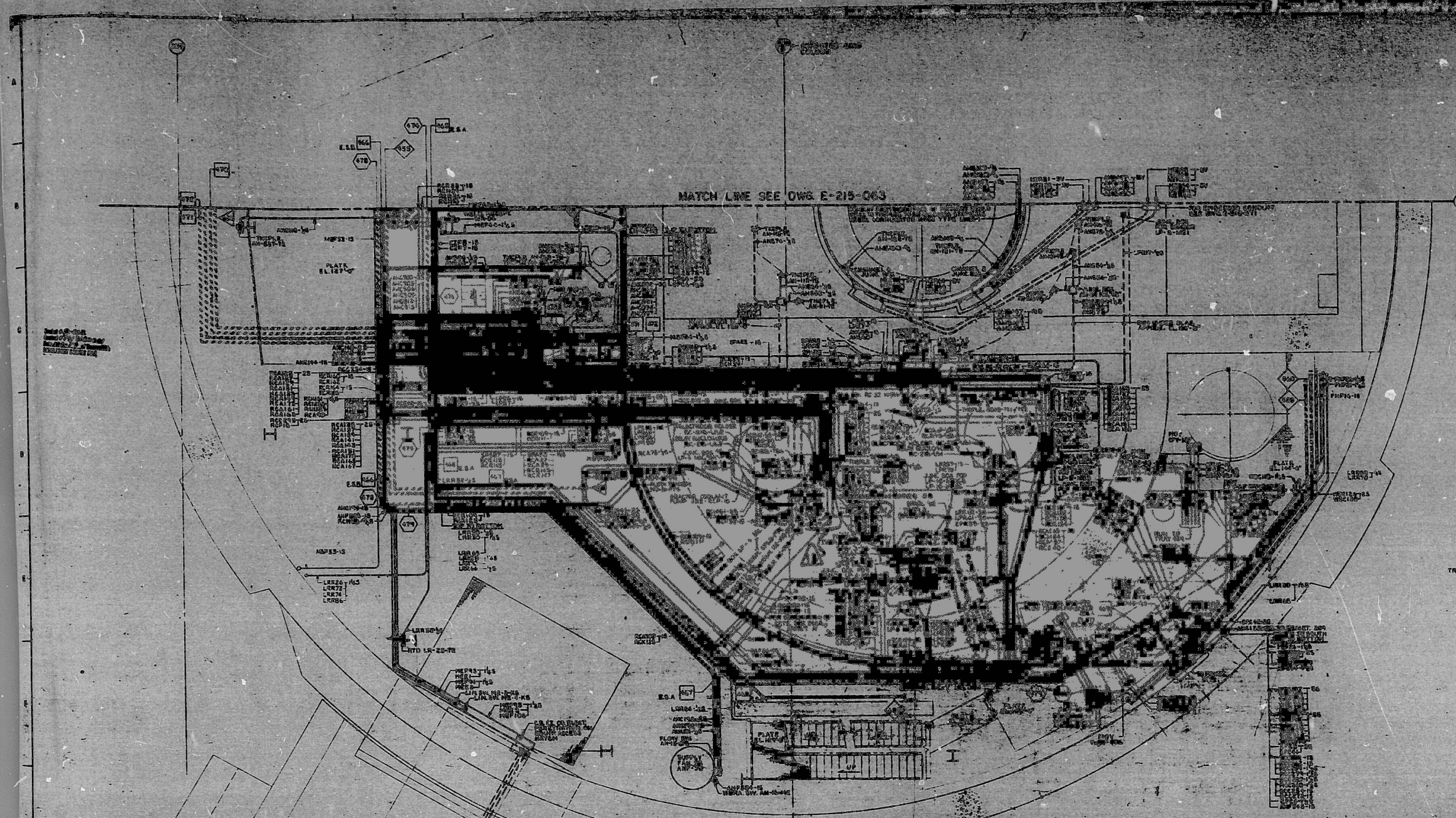


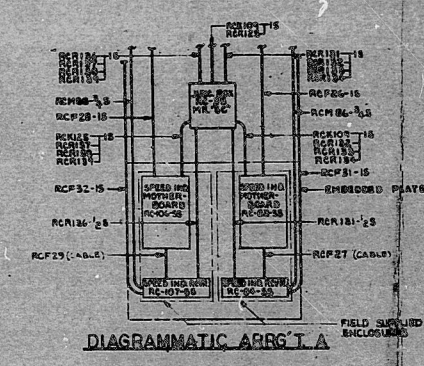
31  
30  
29  
28  
27  
26  
25  
24  
23  
22  
21  
20  
19  
18  
17  
16  
15  
14  
13  
12  
11  
10  
9  
8  
7  
6  
5  
4  
3  
2  
1  
0  
1  
2  
3  
4  
5  
6  
7  
8  
9  
10  
11  
12  
13  
14  
15  
16  
17  
18  
19  
20  
21  
22  
23  
24  
25  
26  
27  
28  
29  
30  
31



FOR LEGEND SEE DWG. E-215-043

CHANGE IN PROGRESS  
DUE TO  
M.A.R./E.C. 70-1-13

REVISIONS:  
E-215-001  
E-215-002  
E-215-003  
E-215-004



|    |                                  |
|----|----------------------------------|
| 1  | REVISED AS INDICATED IN 5 PLACES |
| 2  | REVISED AS INDICATED IN 2 PLACES |
| 3  | REVISED AS INDICATED IN 2 PLACES |
| 4  | REVISED AS INDICATED IN 2 PLACES |
| 5  | REVISED AS INDICATED IN 2 PLACES |
| 6  | REVISED AS INDICATED IN 2 PLACES |
| 7  | REVISED AS INDICATED IN 2 PLACES |
| 8  | REVISED AS INDICATED IN 2 PLACES |
| 9  | REVISED AS INDICATED IN 2 PLACES |
| 10 | REVISED AS INDICATED IN 2 PLACES |
| 11 | REVISED AS INDICATED IN 2 PLACES |
| 12 | REVISED AS INDICATED IN 2 PLACES |
| 13 | REVISED AS INDICATED IN 2 PLACES |
| 14 | REVISED AS INDICATED IN 2 PLACES |
| 15 | REVISED AS INDICATED IN 2 PLACES |
| 16 | REVISED AS INDICATED IN 2 PLACES |
| 17 | REVISED AS INDICATED IN 2 PLACES |
| 18 | REVISED AS INDICATED IN 2 PLACES |
| 19 | REVISED AS INDICATED IN 2 PLACES |
| 20 | REVISED AS INDICATED IN 2 PLACES |
| 21 | REVISED AS INDICATED IN 2 PLACES |
| 22 | REVISED AS INDICATED IN 2 PLACES |
| 23 | REVISED AS INDICATED IN 2 PLACES |
| 24 | REVISED AS INDICATED IN 2 PLACES |
| 25 | REVISED AS INDICATED IN 2 PLACES |
| 26 | REVISED AS INDICATED IN 2 PLACES |
| 27 | REVISED AS INDICATED IN 2 PLACES |
| 28 | REVISED AS INDICATED IN 2 PLACES |
| 29 | REVISED AS INDICATED IN 2 PLACES |
| 30 | REVISED AS INDICATED IN 2 PLACES |
| 31 | REVISED AS INDICATED IN 2 PLACES |
| 32 | REVISED AS INDICATED IN 2 PLACES |

FLORIDA POWER CORPORATION  
12100 W. BOULEVARD  
CORPORATE CENTER  
MIAMI, FLORIDA 33156

491215043



**PDR RIDS**

7912130477

