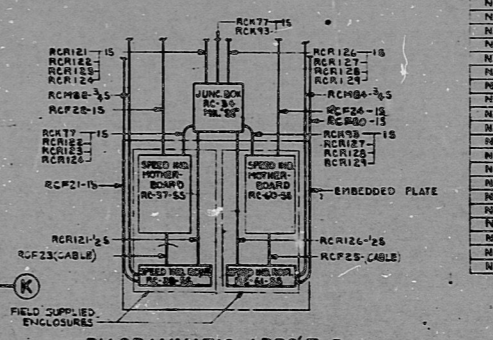
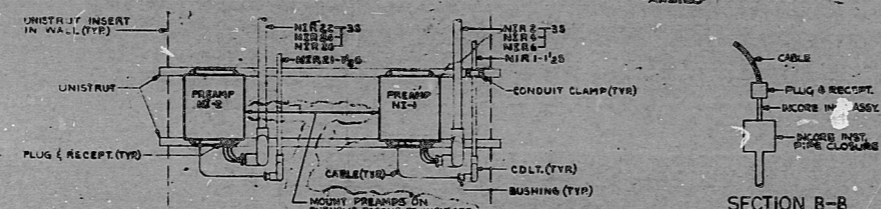
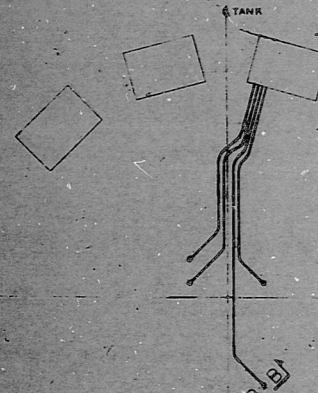


CIRCUIT NO.	RECEPTACLE NO.	TUBE NO.
MI27	8-M	1
MI33	9-M	2
MI35	4-G	3
MI29	8-F	4
MI37	9-E	5
MI31	7-F	6
MI30	7-G	7
MI35	4-G	8
MI1	5-G	9
MI3	6-W	10
MI5	5-K	11
MI27	6-L	12
MI37	7-H	13
MI41	6-N	14
MI29	8-N	15
MI31	6-M	16
MI3	4-M	17
MI29	11-L	18
MI31	11-K	19
MI33	12-K	20
MI35	13-M	21
MI37	13-G	22
MI29	13-F	23
MI41	12-F	24
MI35	11-S	25
MI35	11-H	26
MI3	10-C	27
MI27	10-C	28
MI27	9-C	29
MI27	8-B	30
MI43	7-B	31
MI35	6-C	32
MI7	5-D	33
MI9	4-E	34
MI11	3-F	35
MI13	2-G	36
MI25	1-M	37
MI17	2-L	38
MI19	3-L	39
MI21	3-F	40
MI23	4-M	41
MI25	5-O	42
MI27	6-O	43
MI29	6-F	44
MI31	7-R	45
MI33	8-R	46
MI35	8-O	47
MI37	8-O	48
MI39	14-M	49
MI43	13-L	50
MI45	14-D	51
MI49	13-C	52

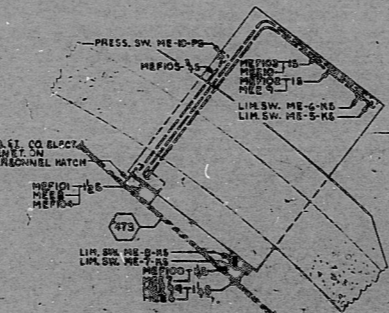


MATCH LINE SEE DWG. E-215-064



CIRCUIT TABULATION

HEP2-350	MURK-1550	RCR15-250	RCR15-150
HEP3-350	MURK-1550	RCR15-250	RCR15-150
HEP4-350	MURK-1550	RCR15-250	RCR15-150
HEP5-350	MURK-1550	RCR15-250	RCR15-150
HEP6-350	MURK-1550	RCR15-250	RCR15-150
HEP7-350	MURK-1550	RCR15-250	RCR15-150
HEP8-350	MURK-1550	RCR15-250	RCR15-150
HEP9-350	MURK-1550	RCR15-250	RCR15-150
HEP10-350	MURK-1550	RCR15-250	RCR15-150
HEP11-350	MURK-1550	RCR15-250	RCR15-150
HEP12-350	MURK-1550	RCR15-250	RCR15-150
HEP13-350	MURK-1550	RCR15-250	RCR15-150
HEP14-350	MURK-1550	RCR15-250	RCR15-150
HEP15-350	MURK-1550	RCR15-250	RCR15-150
HEP16-350	MURK-1550	RCR15-250	RCR15-150
HEP17-350	MURK-1550	RCR15-250	RCR15-150
HEP18-350	MURK-1550	RCR15-250	RCR15-150
HEP19-350	MURK-1550	RCR15-250	RCR15-150
HEP20-350	MURK-1550	RCR15-250	RCR15-150



NOTES:
 O INDICATES LEAD CIRCUIT NUMBER FOR ADDITIONAL CIRCUITS
 FROM LEAD CIRCUIT SEE CIRCUIT TABULATION.
 REFERENCES:
 E-215-001 CONDUIT LAYOUT REACTOR BLDG. EL. 101'-0" NORTH
 '700'S. LEVELS & DETAILS
 E-215-007 CONDUIT LAYOUT REACTOR BLDG. EL. 100'-0" NORTH
 '700'S. LEVELS & DETAILS
 E-215-140 SHEET CL-19-E.S. & DASHED CIRCUIT SCHEDULE

FOR LEGEND SEE DWG. E-215-043

CHANGE IN PROGRESS
 DUE TO
 M.A.R./R.E.L. 22-2-5

CHANGE IN PROGRESS
 DUE TO
 M.A.R./R.E.L. 22-1-23

TERA
 APERTURE
 CARD

NO.	REVISION	DESCRIPTION	DATE	BY	CHK
1	REVISED AS INDICATED	3 PLACES PER ECN 34924	12/22/50
2	REVISED AS INDICATED	PER ECN 34924	12/22/50
3	REVISED AS INDICATED	3 PLACES	12/22/50
4	REVISED AS INDICATED	3 PLACES	12/22/50
5	REVISED AS INDICATED	3 PLACES	12/22/50
6	REVISED AS INDICATED	7 PLACES	12/22/50
7	REVISED AS INDICATED	3 PLACES	12/22/50
8	REVISED AS INDICATED	3 PLACES	12/22/50
9	REVISED AS INDICATED	3 PLACES	12/22/50
10	REVISED AS INDICATED	3 PLACES	12/22/50
11	REVISED AS INDICATED	18 PLACES	12/22/50
12	REVISED AS INDICATED	18 PLACES	12/22/50
13	REVISED AS INDICATED	18 PLACES	12/22/50
14	REVISED AS INDICATED	18 PLACES	12/22/50
15	REVISED AS INDICATED	3 PLACES PER ECN 34924	12/22/50
16	REVISED AS INDICATED	3 PLACES	12/22/50
17	REVISED AS INDICATED	3 PLACES	12/22/50
18	REVISED AS INDICATED	3 PLACES	12/22/50
19	REVISED AS INDICATED	3 PLACES	12/22/50
20	REVISED AS INDICATED	3 PLACES	12/22/50

FLORIDA POWER CORPORATION
 ST. PETERSBURG, FLORIDA
 CRYSTAL RIVER PLANT
 UNIT NO. 3
 855,000 KW

ELECTRICAL CONDUIT LAYOUT
 REACTOR BLDG. - 8'x14' - 10" NORTH

DESIGNED BY: ...
 CHECKED BY: ...
 APPROVED BY: ...

CF

7912130473

