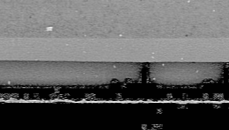
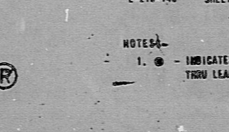
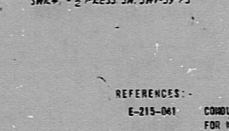
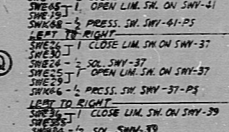
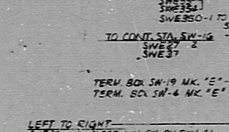
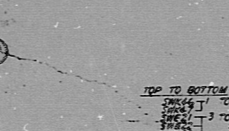
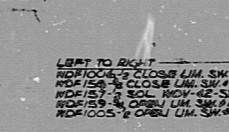
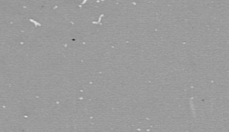
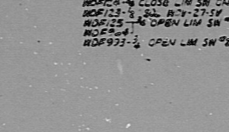
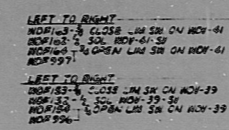
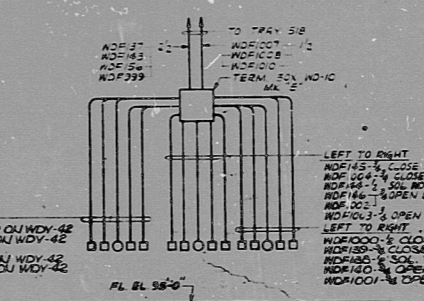
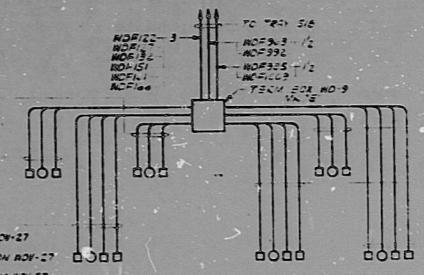


CIRCUIT TABULATIONS

NO.	DESCRIPTION	NO.	DESCRIPTION
1	SW-1	1	SW-1
2	SW-2	2	SW-2
3	SW-3	3	SW-3
4	SW-4	4	SW-4
5	SW-5	5	SW-5
6	SW-6	6	SW-6
7	SW-7	7	SW-7
8	SW-8	8	SW-8
9	SW-9	9	SW-9
10	SW-10	10	SW-10
11	SW-11	11	SW-11
12	SW-12	12	SW-12
13	SW-13	13	SW-13
14	SW-14	14	SW-14
15	SW-15	15	SW-15
16	SW-16	16	SW-16
17	SW-17	17	SW-17
18	SW-18	18	SW-18
19	SW-19	19	SW-19
20	SW-20	20	SW-20



CHANGE IN PROGRESS
DUE TO
M.A.R./RE. 12-10-62

CHANGE IN PROGRESS
DUE TO
M.A.R./RE. 12-7-63

REVISIONS

NO.	DESCRIPTION	DATE
20	ADD UNIT FOR MAR 75-12-62A	12-12-62
19	REVISED PER MAR 69	12-12-62
18	REVISED PER MAR 63	12-12-62
17	REVISED AS INDICATED PER ECL 1022	12-12-62
16	REVISED FOR ECL 1022 PER ECL 1022	12-12-62
15	REVISED AS INDICATED PER ECL 1022	12-12-62
14	REVISED AS INDICATED PER ECL 1022	12-12-62
13	REVISED AS INDICATED PER ECL 1022	12-12-62
12	REVISED AS INDICATED PER ECL 1022	12-12-62
11	REVISED AS INDICATED PER ECL 1022	12-12-62
10	REVISED AS INDICATED PER ECL 1022	12-12-62
9	REVISED AS INDICATED PER ECL 1022	12-12-62
8	REVISED AS INDICATED PER ECL 1022	12-12-62
7	REVISED AS INDICATED PER ECL 1022	12-12-62
6	REVISED AS INDICATED PER ECL 1022	12-12-62
5	REVISED AS INDICATED PER ECL 1022	12-12-62
4	REVISED AS INDICATED PER ECL 1022	12-12-62
3	REVISED AS INDICATED PER ECL 1022	12-12-62
2	REVISED AS INDICATED PER ECL 1022	12-12-62
1	REVISED AS INDICATED PER ECL 1022	12-12-62

FLORIDA POWER CORPORATION
ST. PETERSBURG, FLORIDA
CRYSTAL RIVER PLANT

UNIT NO. 3
ELECTRICAL
CONNECTION LAYOUT
AUXILIARY BUILDING 61, 62-0

DESIGNED BY: [Signature]
CHECKED BY: [Signature]
APPROVED BY: [Signature]

DATE	RELEASED FOR	ENGR.

1912130406

CF.

7912130466

