

**INFORMATION**  
THIS DOCUMENT IS  
SUBJECT TO REVISION  
WITHOUT NOTIFICATION  
TO THE USER OF THIS  
COPY

**REFERENCE DRAWINGS:**  
O-E-0105 - ELECTRICAL WIRING STANDARDS  
AND SYMBOLS  
I-2-3663 - LETDOWN TO DEMIN.  
3HT-19 DIVERSION VALVE LOGIC DIAGRAM

**LEGEND:**  
■ - TERMINATION CABINET  
TIS 143 - LETDOWN HEAT EXCHANGER TEMP.  
SWITCH - OPENS IF TEMP IS ABOVE  
SETPOINT  
TIS 382 - BTRS DEMINERALIZER TEMP. SWITCH  
OPENS IF TEMP IS ABOVE SETPOINT

**NOTES:**  
1 - VALVE FAILS WITH FLOW TO VCT

TCV-143-O

CONTACT	VALVE POSITION	USE
20	CLOSE	SP
2a	OPEN	RED LT.
2b		SP
2c		SP

0% 100%

TCV-143-C

CONTACT	VALVE POSITION	USE
2c	CLOSE	RED LT.
2b	OPEN	SP
2a		SP
2c		SP

0% 100%

CS-MB CP-004

BLOCK	CONTACT	POSITION	USE
A	NC (1)	X	SP
	NO (2)	X	CONT
B	NC (3)	X	SP
	NO (4)	X	SP

MAINTAINED CONTACTS  
X - DENOTES CONTACT CLOSED  
G.E. CAT. NO. CR 2940UB 203A

TERA  
APERTURE  
CARD

**NUCLEAR SAFETY RELATED CLASS I E**

PKG: 048A	SUFF: 102	ACT: 581
DRAWING TITLE ELECTRICAL	CONTRACT NO CR-0241	SCALE NONE
CONTROL WIRING DIAGRAM	DRAWING NO 6-R-17	
LETDOWN TO DEMINERALIZER		
DIVERSION VALVE TCV-143		

1-E-6597-A

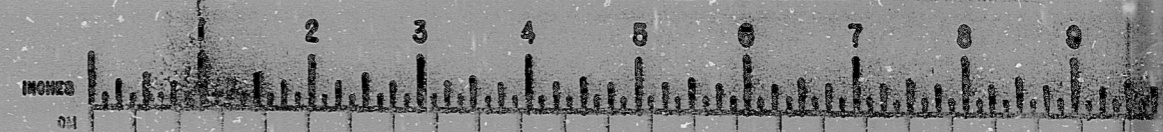
DATE	DESCRIPTION	BY	CHK	PROJ. ENG.	PROJ. MGR.	DATE	DESCRIPTION	BY	CHK	PROJ. ENG.	PROJ. MGR.
	ISSUED FOR REVIEW & COMMENT	RLS	TT			05					

**Brown & Root, Inc.**  
ENGINEERS-CONSTRUCTORS  
HOUSTON, TEXAS

**SOUTH TEXAS PROJECT**

INFORMATION PRELIMINARY REVIEW USE CONSTRUCTION

**BROWN & ROOT INC.**  
MICROFILM SERVICES



11  
178  
3.5"  
11"  
17"

RIDS

812100449

