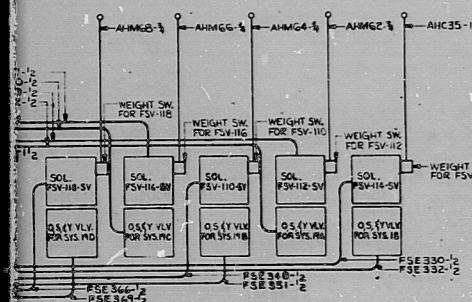
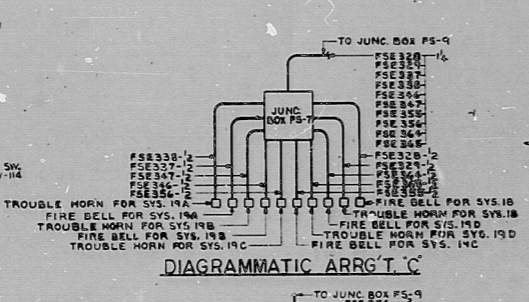


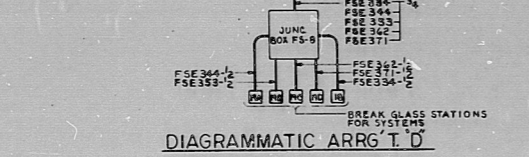
PLAN  
AUX BLDG. SOUTH EL. 143'-0"



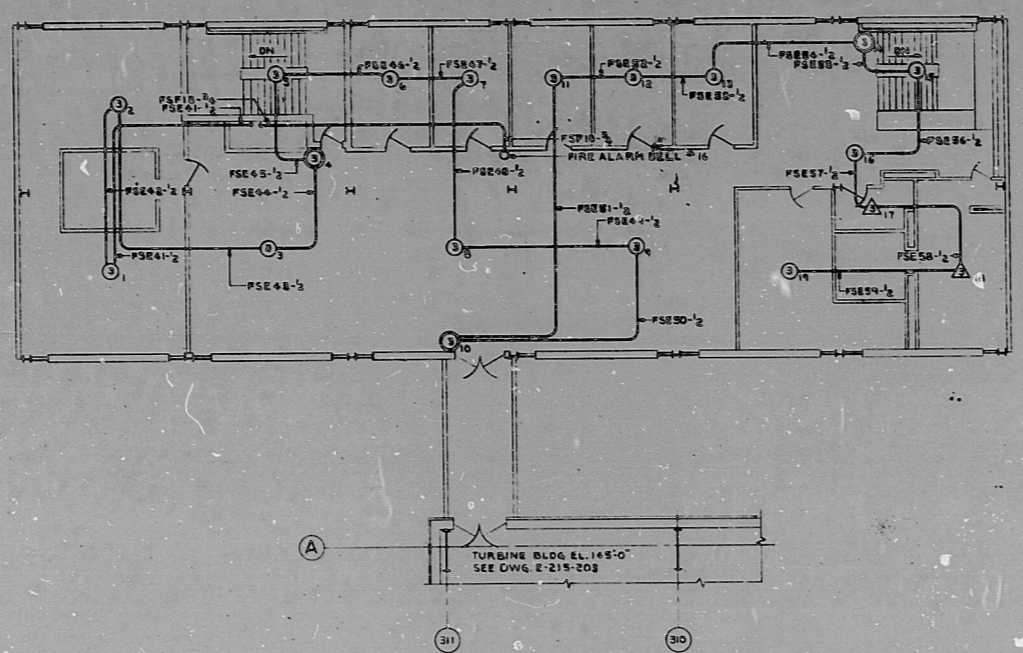
DIAGRAMMATIC ARRGT. B



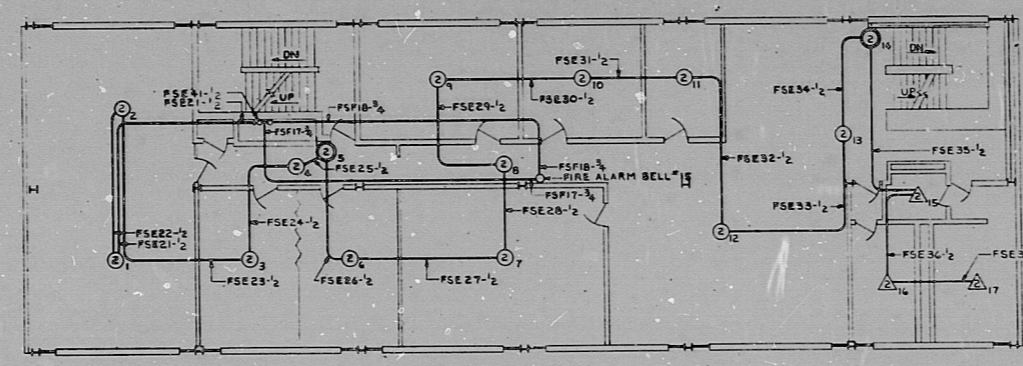
DIAGRAMMATIC ARRGT. C



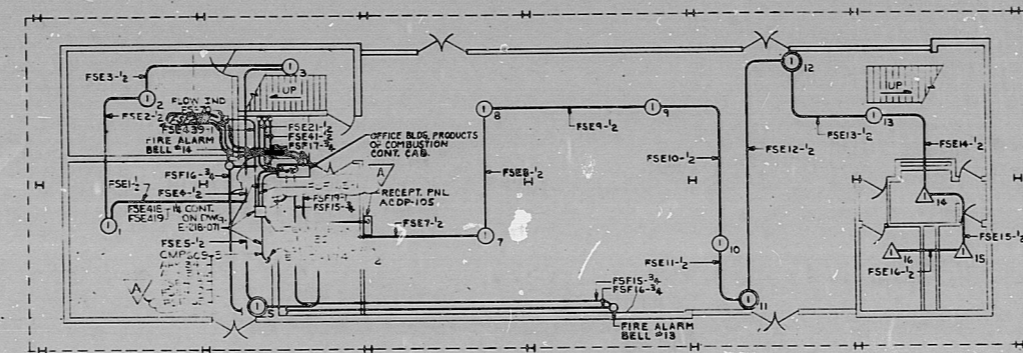
DIAGRAMMATIC ARRGT. D



OFFICE BLDG. EL. 145'-0"



OFFICE BLDG. EL. 133'-0"



OFFICE BLDG. EL. 119'-0"

NOTES:  
1. DOTTED LINES INDICATE EQUIPMENT UNDER FLOOR ELEVATION 143'-0".

REFERENCES:  
E-215-201 FIRE SERVICE - TURBINE BLDG. BASEMENT FLOOR  
NOTES AND LEGEND

Florida Power Corporation  
ASSIGNED TO: [Blank]  
ORIGINAL DRAWING  
TITLE: CONDUIT LAYOUT - FIRE SERVICE  
DESIGNED BY: [Blank]  
DRAWING NO.: 4203  
INTER. NO.: [Blank]  
CHECKED BY: [Blank]  
APPROVED BY: [Blank]  
ISSUE DATE: 11-15-57

TERA APERTURE CARD

NO.	REVISIONS	BY	DATE
3	REVISED AS INDICATED 3 PLACES PER ECN 3468	CPY	11-15-57
1	REVISED AS INDICATED 1 PLACE	CPY	11-15-57
3	REVISED AS INDICATED 3 PLACES	CPY	11-15-57
2	REVISED AS INDICATED 3 PLACES PER ECN 3468	CPY	11-15-57
1	REVISED AS INDICATED 1 PLACE	CPY	11-15-57

**FLORIDA POWER CORPORATION**  
ST. PETERSBURG, FLORIDA  
**CRYSTAL RIVER PLANT**  
UNIT NO. 3 835,000 KW

ELECTRICAL  
CONDUIT LAYOUT - FIRE SERVICE  
AUXILIARY BLDG. EL. 143'-0" & OFFICE BLDG.

CONSTRUCTION  
LIMITED CONTRACTOR  
PHELPS AND PHOENIX  
4203 E-215-208 E-215-208

971215302



CF

7912130362

