

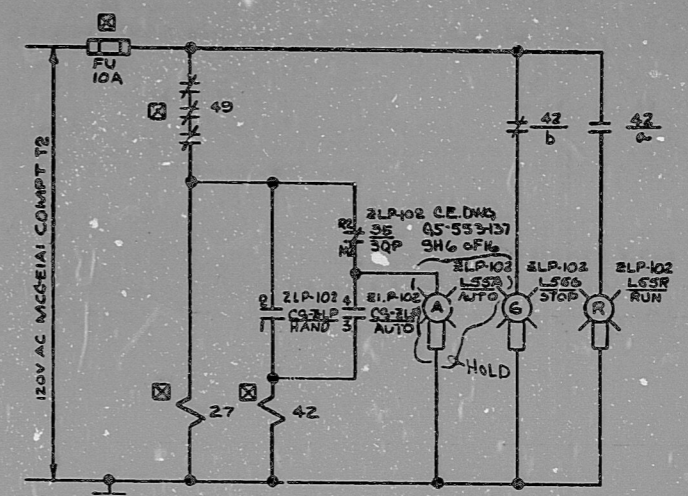
CS-ZLP-102 43QP

CONTACTS (HANDLE END)	POSITION			USE
	HAND	OFF	AUTO	
10-1-02	X			CONT
30-1-03			X	CONT
50-1-06	X			SP
70-1-08			X	SP

X-DENOTES CONTACT CLOSED MAINTAINED CONTACTS (VENDOR FURNISHED)

INFORMATION
THIS DOCUMENT IS
SUBJECT TO REVISION
WITHOUT NOTIFICATION
TO THE USER OF THIS
COPY

STDBY. DIESEL NO. 11
STDBY. LUBE OIL PUMP
CS-ZLP
HAND OFF AUTO
TERA
APERTURE
CARD



ELEMENTARY DIAGRAM

5/6 42/a TO DNG FE-7200
17/18 27/b TO COMPUTER PT. DD1034 (480V MCC EIA1 COMPT T2)

LEGEND
43QP STANDBY OIL PUMP MOTOR CONTROL SWITCH
35/30P STANDBY OIL PUMP CONTROL RELAY
27 LOSS OF CONTROL POWER

REF. DWGS
0-E-0105 - ELECT. WIRING STANDARD & SYMBOLS.
1-E-1225 - ONE LINE DIAGRAM 480V ESF MCC-EIA1 UNIT NO. 1
65-553-137 ENGINE CONTROL PANEL DG# 11 SH. 6 OF 16

480V MCC-EIA1 COMPT. T2
ELECT. EQUIP. NO. 3E171EMCEIA1

NUCLEAR SAFETY RELATED
CLASS IE

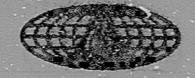
PKG: 014	SUFF: 105	ACT: 581
DRAWING TITLE ELECTRICAL CONTROL WIRING DIAGRAM STDBY. DIESEL GEN. NO. 11 STDBY. LUBE OIL PUMP		CONTRACT NO. SCALE CR-0241 NONE DRAWING NO. 5-Q-15 1-E-7159-A

DATE	DESCRIPTION	BY	CHK	PROJ. ENG.	PROJ. MGR.	DATE	DESCRIPTION	BY	CHK	PROJ. ENG.	PROJ. MGR.
ISSUED FOR USE											

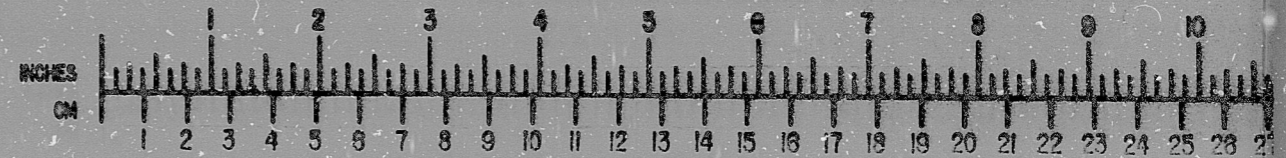
Brown & Root Inc.
ENGINEERS-CONSTRUCTORS
HOUSTON, TEXAS

SOUTH TEXAS
PROJECT

INFORMATION PRELIMINARY REVIEW USE CONSTRUCTION



BROWN & ROOT INC.
MICROFILM SERVICES



17/1

17"

RIDS

8112100419

