

ELEMENTARY DIAGRAM

- LEGEND**
- 43QH OIL HEATER CONTROL SWITCH
 - 23Q OIL HEATER CONTROL SWITCH
- REF DWGS.**
- 0-E-0105 ELECT. WIRING STANDARDS & SYMBOLS
 - 1-E-1225 ONE LINE DIAGRAM 480V ESF MCC-EIAI UNIT NO.1
 - GS-353-137 ENGINE CONTROL PANEL D0#11 SH.10 OF 16

C. ZLP-102 43QH

CONTACTS (HANDLE END)	POSITION			USE
	HAND	OFF	AUTO	
10-1-02	X			CONT
30-1-04			X	CONT
50-1-06	X			SP
70-1-08			X	SP

X DENOTES CONTACT CLOSED MAINTAINED CONTACTS (VENDOR FURNISHED)



TERA APERTURE CARD

480V MCC-EIAI COMPT. A2
ELECT. EQUIP. NO. 3E171EMCEIA1

NUCLEAR SAFETY RELATED CLASS IE

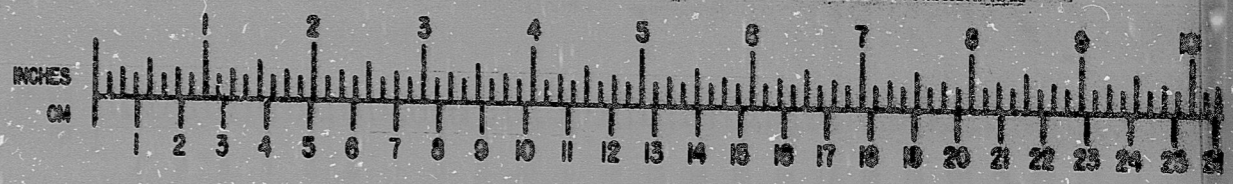
PKG: 014A	SUFF: 105	ACT: 581
DRAWING TITLE ELECTRICAL CONTROL WIRING DIAGRAM		CONTRACT NO. SCALE CR-0241 NONE
STOBY. DIESEL GEN. NO. 11 L.O. CIRC. HTR.		DRAWING NO. 5-Q-15 1E-7200-A

DATE	ISSUED FOR USE	BY	CHK	ENG	MGR	DRY	SHO	NO	DATE	DESCRIPTION	BY	CHK	ENG	MGR

Brown & Root Inc.
ENGINEERS-CONSTRUCTORS
HOUSTON, TEXAS

SOUTH TEXAS PROJECT

BROWN & ROOT INC.
MICROFILM SERVICES



THURSDAY, MAY 17 1955

THIS DOCUMENT IS
SUBJECT TO REVISION
WITHOUT NOTIFICATION
TO THE USER OF THIS
COPY

MICROFILM MAY 17 1955

9.5"

11"

17"

RIDS

8112100398

