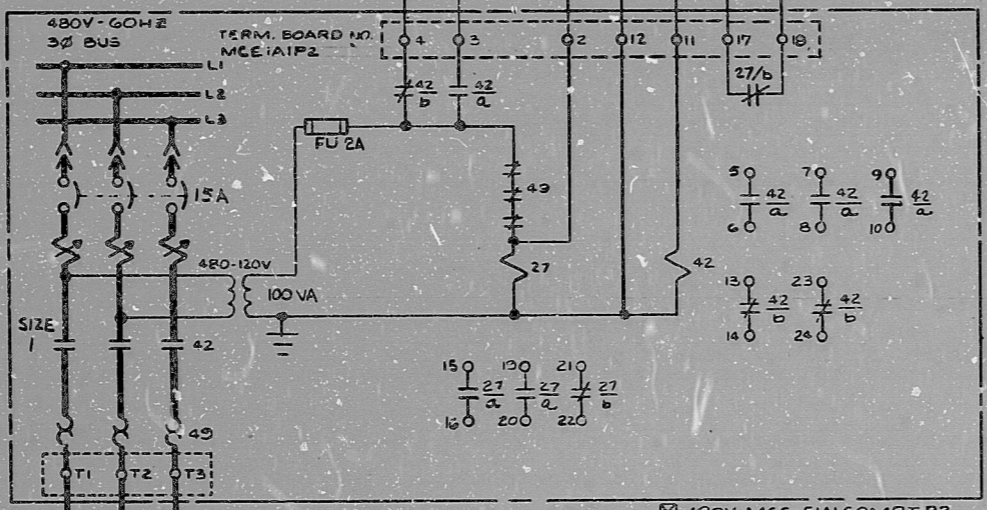


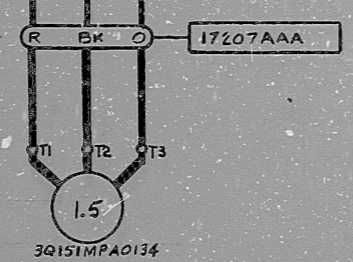
ELEMENTARY DIAGRAM

TO COMPUTER  
FE 8D1045  
(480V MCC-EIAI-COMPT. P2)

LEGEND  
43FOD FUEL OIL BOOSTER PUMP MOTOR CONTROL SWITCH  
71FOD FUEL OIL DRIP TANK LEVEL ALARM SWITCH  
27 LOSS OF CONTROL POWER



480V MCC-EIAI COMPT. P2  
ELECT. EQUIP. NO. 3E171EMCEIAI



S-ZLP-102 43FOD

CONTACTS (HANDLE END)	POSITION			USE
	HAND	OFF	AUTO	
10-1-O2	X			CONT
30-1-O2			X	CONT
50-1-C6	X			SP
70-1-C6			X	SP

X DENOTES CONTACT CLOSED  
MAINTAINED CONTACTS  
(VENDOR FURNISHED)

STDBY DIESEL NO.11  
FUEL OIL TRANSFER PUMP



TERA  
APERTURE  
CARD

REF DWG'S  
O-E-0105 ELECT. WIRING STANDARDS & SYMBOLS  
1-E-1225 ONE LINE DIAGRAM 480V ESF MCC-EIAI UNIT NO.1  
CS-553-137 ENGINE CONTROL PANEL DG#11  
SH.10 OF 16

480V MCC-EIAI COMPT. P2  
ELECT. EQUIP. NO. 3E171EMCEIAI

NUCLEAR SAFETY RELATED  
CLASS IE

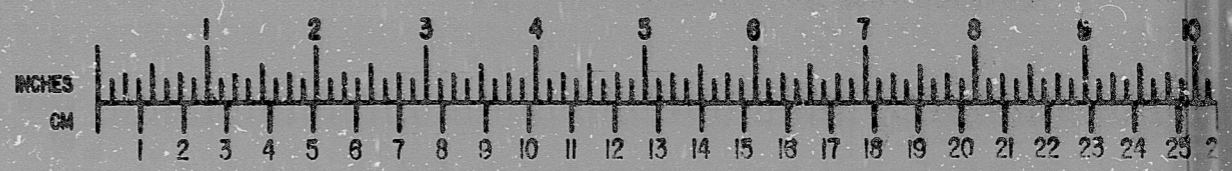
PKG: 014A	SUFF: 105	ACT: 581
DRAWING TITLE ELECTRICAL CONTROL WIRING DIAGRAM STDBY. DIESEL GEN. NO.11 FUEL OIL TRANSFER PUMP		CONTRACT NO. SCALE CR-0241 NONE DRAWING NO. Q-15 1E-7207-A

NO.	ISSUED FOR USE	BY	CHK	PROJ. ENGR.	PROJ. MGR.	DATE	DESCRIPTION	BY	CHK	PROJ. ENGR.	PROJ. MGR.	DATE
1												

**Brown & Root Inc.**  
ENGINEERS-CONSTRUCTORS  
HOUSTON, TEXAS

**SOUTH TEXAS PROJECT**

**BROWN & ROOT INC.**  
MICROFILM SERVICES



MICROFILMED BY 1775

8.5"

11"

17"



