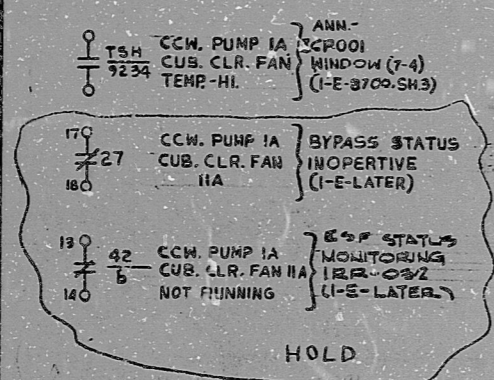


INFORMATION
THIS DOCUMENT IS
SUBJECT TO REVISION
WITHOUT NOTIFICATION
TO THE USER OF THIS
COPY



CS-MB (1S117)

BLOCK	CONTACT	POSITION		USE
		STOP	AUTO START	
A	NC(1)	X		SP
	NO(2)		X	CONT
B	NC(3)		X	CONT
	NO(4)	X	X	SP

MAINTAINED CONTACTS
X-DENOTES CONTACTS CLOSED
GE CAT # CR 2340UB203C



- REFERENCE DRAWINGS
- 0-E-0109 ELECTRICAL WIRING STANDARDS & SYMBOLS
 - 1-E-3490 MECH. AUX. BLDG. HVAC. CCM PUMPS
 - SH-4 CUBICLE COOLER FAN LOGIC DIAG.
 - 1-E-7363 CONTROL WIRING DIAGRAM MECH. AUX. BLDG. HVAC. CCM PP IA CUB. CLR. FAN IIA

- LEGEND
- TSH-9234 - CCM PUMP IA CUB. CLR. FAN TEMP. SW. CONTACT CLOSURES ON HIGH TEMP.
 - 27 - LOSS OF CONTROL POWER RELAY.
 - IRR-032 - ESF MON. TRAIN A CABINET.

TERA
APERTURE
CARD

MECH. EQUIP. NO. 3V01VAH001
480V. MCC. EIA2-COMPT. B2

NUCLEAR SAFETY RELATED CLASS I E

PKG.: 042 SUFF: 102 ACT.: 581

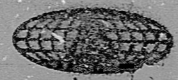
DRAWING TITLE ELECTRICAL	CONTRACT NO. SCALE CR-0241 NONE
ELEMENTARY DIAGRAM MECH. AUX. BLDG. HVAC. CCW PP IA CUB. CLR. FAN IIA	DRAWING NO. 4-V-10 1-E-5363-C

OPERATION PRELIMINARY REVIEW USE IN CONSTRUCTION

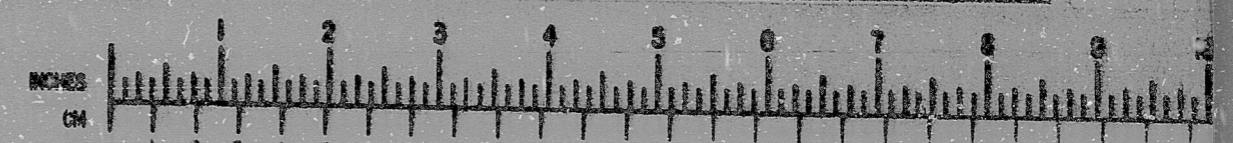
NO.	DATE	DESCRIPTION	BY	CHK	PROJ. ENG.	PROJ. MGR.	DATE	DESCRIPTION	BY	CHK	PROJ. ENG.	PROJ. MGR.
1		ISSUED AS NOTED & ISSUED FOR USE										
2		UPDATED, REISSUE FOR COMMENT										
3		ISSUE FOR REVIEW & COMMENT										

Brown & Root Inc.
ENGINEERS CONSTRUCTORS
HOUSTON, TEXAS

**SOUTH TEXAS
PROJECT**



**BROWN & ROOT INC.
MICROFILM SERVICES**



FRIDAY, SEPT. 7 1973

MICROFILMED APR 6 1978

8.5"

11"

17"

RIDS

8112100333

