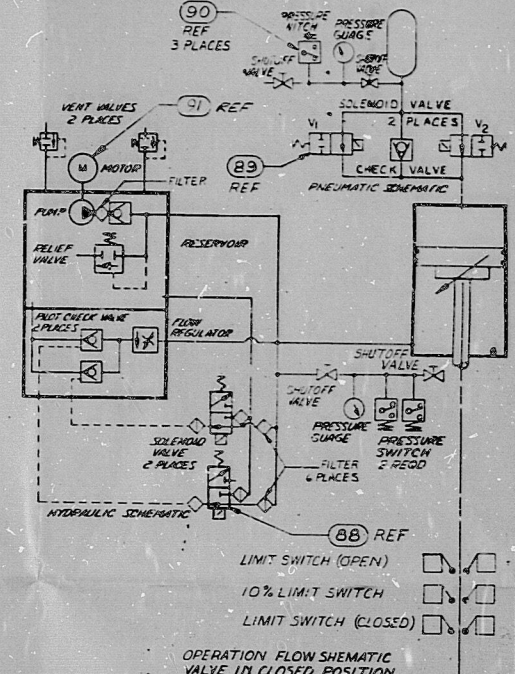


REVISIONS	DESCRIPTION	DATE	APPROVED
A	REVISED SHEET 1&2 - SEE ECM	12/27/71	[Signature]
B	REVISED SHEET 1&2 - SEE ECM	1/27/72	[Signature]
C	INCORPORATED AECN REV C	2/10/72	[Signature]
D	REVISED - SEE ECM	3/1/72	[Signature]
E	REVISED - SEE ECM	3/1/72	[Signature]
F	REVISED - SEE ECM	3/1/72	[Signature]
G	REVISED - SEE ECM	3/1/72	[Signature]
H	REVISED - SEE ECM	3/1/72	[Signature]

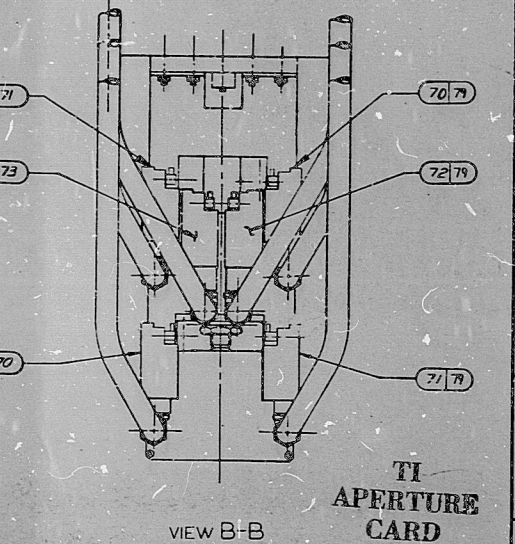
Nuclear Valve Division
 CLASS 2
 MANUFACTURE SERIAL NO. 80210
 YEAR BUILT: 1971

IDENT PLATE
 DETAIL B
 89 REF
 2 PLACES

IDENT PLATE
 DETAIL A
 1800 500
 2280 PSI AT 100°F
 DESIGN PRESSURE
 CLASS 2
 MANUFACTURE SERIAL NO. 80210
 YEAR BUILT: 1971



REVIEWED FOR
 BYRON
 SPEC NO. E-2774 PROJ. NO. 4391
 UNITS 1 & 2
 BRADWOOD
 SPEC NO. 2222 PROJ. NO. 4683
 COMMONWEALTH EDISON CO.
 SARAGENT & LUNDY
 ENGINEERS
 1. NO EXCEPTION TAKEN
 CONTRACTOR CAN PROCEED
 WITH FABRICATION OR
 CONSTRUCTION UNLESS
 2. CONTRACTOR HAS PROVIDED
 NOTED AND REQUIRING
 3. REVISE AS NOTED AND
 RESUBMIT.
 HOLD FABRICATION.
 A. ACTIVITY SHOWN ABOVE IS
 SUBJECT TO THE TERMS OF THE
 CONTRACT AND DOES NOT RELIEVE
 CONTRACTOR FROM HIS OBLIGATION
 INCLUDING DESIGN AND DETAILING.
 FOP DRAW PERMITS (LEGATIVITY VALUES
 EQUIPMENT NO.
 BY S. R. LAZOWSKI DATE: NOV. 22, 1978



8410220151

SARGENT & LUNDY ENGINEERS
 COMMONWEALTH EDISON COMPANY
 BYRON AND BRADWOOD STATIONS - UNITS 1 AND 2
 PURCHASE ORDER NO. 203726 AND 203737
 VALUE TAG NUMBERS: 1F70059 2F70059
 1F70098 2F70098
 1F7009C 2F7009C
 1F7009D 2F7009D

DATE	BY	APP'D	REVISION
12/27/71	[Signature]	[Signature]	1
1/27/72	[Signature]	[Signature]	2
2/10/72	[Signature]	[Signature]	3
3/1/72	[Signature]	[Signature]	4
3/1/72	[Signature]	[Signature]	5
3/1/72	[Signature]	[Signature]	6
3/1/72	[Signature]	[Signature]	7
3/1/72	[Signature]	[Signature]	8
3/1/72	[Signature]	[Signature]	9
3/1/72	[Signature]	[Signature]	10

Nuclear Valve Division
 TITLE: FEEDWATER ISOLATION VALVE - 16X10X16 .900 LB. CARBON STEEL
 SIZE: CODE IDENT NO. E 7929A
 SCALE: 1/4" = 1"

DETAIL D ROTATED 180°
 SCHEDULE 120
 (INLET)

DETAIL C ROTATED 180°
 SCHEDULE 80
 (OUTLET)

8.5"
 11"
 8.5"
 11"

8.5"
 11"
 8.5"
 11"

PDR RIDS

8410220151

