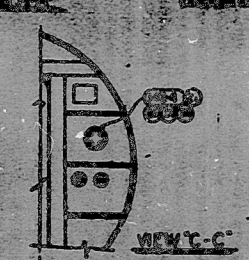
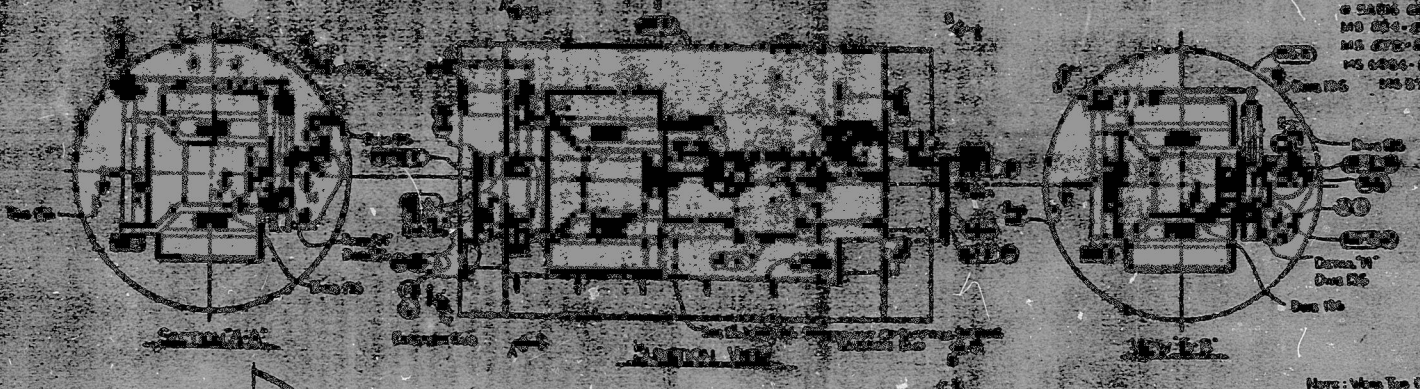


ITEM NO.	DESCRIPTION	QTY	UNIT	ITEM NO.	DESCRIPTION	QTY	UNIT	ITEM NO.	DESCRIPTION	QTY	UNIT
155-26	1/2" DIA. PIN	1	PC	155-27	1/2" DIA. PIN	1	PC	155-28	1/2" DIA. PIN	1	PC
155-29	1/2" DIA. PIN	1	PC	155-30	1/2" DIA. PIN	1	PC	155-31	1/2" DIA. PIN	1	PC
155-32	1/2" DIA. PIN	1	PC	155-33	1/2" DIA. PIN	1	PC	155-34	1/2" DIA. PIN	1	PC
155-35	1/2" DIA. PIN	1	PC	155-36	1/2" DIA. PIN	1	PC	155-37	1/2" DIA. PIN	1	PC
155-38	1/2" DIA. PIN	1	PC	155-39	1/2" DIA. PIN	1	PC	155-40	1/2" DIA. PIN	1	PC
155-41	1/2" DIA. PIN	1	PC	155-42	1/2" DIA. PIN	1	PC	155-43	1/2" DIA. PIN	1	PC
155-44	1/2" DIA. PIN	1	PC	155-45	1/2" DIA. PIN	1	PC	155-46	1/2" DIA. PIN	1	PC
155-47	1/2" DIA. PIN	1	PC	155-48	1/2" DIA. PIN	1	PC	155-49	1/2" DIA. PIN	1	PC
155-50	1/2" DIA. PIN	1	PC	155-51	1/2" DIA. PIN	1	PC	155-52	1/2" DIA. PIN	1	PC
155-53	1/2" DIA. PIN	1	PC	155-54	1/2" DIA. PIN	1	PC	155-55	1/2" DIA. PIN	1	PC
155-56	1/2" DIA. PIN	1	PC	155-57	1/2" DIA. PIN	1	PC	155-58	1/2" DIA. PIN	1	PC
155-59	1/2" DIA. PIN	1	PC	155-60	1/2" DIA. PIN	1	PC	155-61	1/2" DIA. PIN	1	PC
155-62	1/2" DIA. PIN	1	PC	155-63	1/2" DIA. PIN	1	PC	155-64	1/2" DIA. PIN	1	PC
155-65	1/2" DIA. PIN	1	PC	155-66	1/2" DIA. PIN	1	PC	155-67	1/2" DIA. PIN	1	PC
155-68	1/2" DIA. PIN	1	PC	155-69	1/2" DIA. PIN	1	PC	155-70	1/2" DIA. PIN	1	PC
155-71	1/2" DIA. PIN	1	PC	155-72	1/2" DIA. PIN	1	PC	155-73	1/2" DIA. PIN	1	PC
155-74	1/2" DIA. PIN	1	PC	155-75	1/2" DIA. PIN	1	PC	155-76	1/2" DIA. PIN	1	PC
155-77	1/2" DIA. PIN	1	PC	155-78	1/2" DIA. PIN	1	PC	155-79	1/2" DIA. PIN	1	PC
155-80	1/2" DIA. PIN	1	PC	155-81	1/2" DIA. PIN	1	PC	155-82	1/2" DIA. PIN	1	PC
155-83	1/2" DIA. PIN	1	PC	155-84	1/2" DIA. PIN	1	PC	155-85	1/2" DIA. PIN	1	PC
155-86	1/2" DIA. PIN	1	PC	155-87	1/2" DIA. PIN	1	PC	155-88	1/2" DIA. PIN	1	PC
155-89	1/2" DIA. PIN	1	PC	155-90	1/2" DIA. PIN	1	PC	155-91	1/2" DIA. PIN	1	PC
155-92	1/2" DIA. PIN	1	PC	155-93	1/2" DIA. PIN	1	PC	155-94	1/2" DIA. PIN	1	PC
155-95	1/2" DIA. PIN	1	PC	155-96	1/2" DIA. PIN	1	PC	155-97	1/2" DIA. PIN	1	PC
155-98	1/2" DIA. PIN	1	PC	155-99	1/2" DIA. PIN	1	PC	155-100	1/2" DIA. PIN	1	PC

**POOR ORIGINAL**

II  
APERTURE  
CARD



Chicago Bridge & Iron Company

SUB-FINAL ASSEMBLY FOR EMERGENCY PERSONNEL LOCK

DATE: 11/22/57

BY: [Signature]

REVIEWED FOR DESIGN

NO. 841022-0139

BY: [Signature] DATE: [Date]

841022 0139



PDR RIDS

8410220139

