



TERA  
APERTURE  
CARD

- |  |  |  |
|--|--|--|
| 45RM-A } RETURN UNIT IIA RELIEF<br>LINE DMPR. SOL. VV. 20/PY9338<br>(1-E-5394) | 45RM-B } RETURN UNIT IIB RELIEF<br>LINE DMPR. SOL. VV. 20/PY9364<br>(1-E-5395) | 45RM-C } RETURN UNIT IIC RELIEF<br>LINE DMPR. SOL. VV. 20/PY9390<br>(1-E-5396) |
| 45RM-A } IRR-032<br>(1-E-LATER)  | 45RM-B } IRR-033<br>(1-E-LATER)  | 45RM-C } IRR-034<br>(1-E-LATER)  |
| 45RM-A } SUPPLY AIR<br>FAN IIA<br>(1-E-5406)                                   | 45RM-B } SUPPLY AIR<br>FAN IIB<br>(1-E-5407)                                   | 45RM-C } SUPPLY AIR<br>FAN IIC<br>(1-E-5408)                                   |
| 45RM-A } M/U AIR<br>FAN IIA<br>(1-E-5412)                                      | 45RM-B } M/U AIR<br>FAN IIB<br>(1-E-5413)                                      | 45RM-C } M/U AIR<br>FAN IIC<br>(1-E-5414)                                      |
| 45RM-A } C/U AIR<br>FAN IIA<br>(1-E-5415)                                      | 45RM-B } C/U AIR<br>FAN IIB<br>(1-E-5416)                                      | 45RM-C } C/U AIR<br>FAN IIC<br>(1-E-5417)                                      |
| 45RM-A } CHILLED WTR.<br>PUMP IIA<br>(1-E-5424)                                | 45RM-B } CHILLED WTR.<br>PUMP IIB<br>(1-E-5425)                                | 45RM-C } CHILLED WTR.<br>PUMP IIC<br>(1-E-5426)                                |
| 45RM-A } EXH. AIR<br>FAN IIA<br>(1-E-5418)                                     | 45RM-B } EXH. AIR<br>FAN IIB<br>(1-E-5419)                                     | 45RM-C } EXH. AIR<br>FAN IIC<br>(1-E-5420)                                     |
| 45RM-A } CONT. ROOM<br>ISOL. DAMPERS<br>(1-E-5391, SH.1)                       | 45RM-B } CONT. ROOM<br>ISOL. DAMPERS<br>(1-E-5391, SH.2)                       | 45RM-C } CONT. ROOM<br>ISOL. DAMPERS<br>(1-E-5393, SH.3)                       |

REFERENCE DRAWINGS  
 0-E-0105 - ELECTRICAL WIRING STANDARDS  
 1-E-7393 - CONTROL WIRING DIAGRAM  
 ELECT. AUX. BLDG. HVAC  
 RADIATION MONITORING SYSTEM

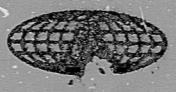
INFORMATION  
 THIS DOCUMENT IS  
 SUBJECT TO REVISION  
 WITHOUT NOTIFICATION  
 TO THE USER OF THIS  
 COPY

LEGEND  
 RITS/8033 - CONTROL RM. RADIATION MONITOR A.  
 CONTACTS OPEN ON HI-RADIATION  
 RITS/8034 - CONTROL RM. RADIATION MONITOR B.  
 CONTACTS OPEN ON HI-RADIATION  
 TERMINATION CABINET  
 45RM-A - RADIATION MONITOR AUX. RELAY - TRAIN A  
 45RM-B - RADIATION MONITOR AUX. RELAY - TRAIN B  
 45RM-C - RADIATION MONITOR AUX. RELAY - TRAIN C  
 IRR-032 - ESP MONITORING TRAIN A CABINET.  
 IRR-033 - ESP MONITORING TRAIN B CABINET.  
 IRR-034 - ESP MONITORING TRAIN C CABINET.

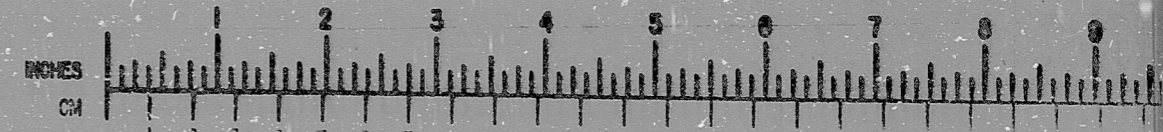
NUCLEAR SAFETY RELATED  
 CLASS 1E  
 PKG : 042A SUFF : 102 ACT : 581  
 DRAWING TITLE : ELECTRICAL  
 CONTRACT NO. SCALE : CR-0241 NONE  
 ELEMENTARY DIAGRAM  
 ELECT. AUX. BLDG. HVAC  
 DRAWING NO. 4-V-11  
 RAD. MONITORING SYSTEM  
 I-E-5393-B

DATE	DESCRIPTION	BY	CHK	PROJ	PROJ	DATE	DESCRIPTION	BY	CHK	PROJ	PROJ
	ISSUED AS NOTED & ISSUE FOR USE										
	ISSUED FOR REVIEW & COMMENTARY										

**SOUTH TEXAS PROJECT**  
 Brown & Root Inc.  
 ENGINEERS-CONSTRUCTORS  
 HOUSTON, TEXAS



**BROWN & ROOT INC.**  
**MICROFILM SERVICES**



FRIDAY, SEPT. 7, 1973

R105

8112100262

