

27 TO BYPASS INOPERATIVE HOLD  
 CONTMNT. ISOL TRAIN B VALVE OVERLOAD  
 49x ANNUNCIATOR CPO02 WINDOW NO. 2-10  
 33 TO ESF MONITORING HOLD

BLOCK	CONTACT	POSITION (4S100)			USE
		CLOSE	NORMAL	OPEN	
A	NC (1)		X	X	SPARE CONT.
	NO (2)	X			SPARE CONT.
B	NC (3)	X			SPARE CONT.
	NO (4)			X	CONT.

SPRING RETURN TO NORMAL  
 X - DENOTES CONTACTS CLOSED  
 G.E. CAT. N° CR2940US203E



CONTACT	VALVE POSITION		USE
	CLOSE	OPEN	
1			THIS DWG SP
2			THIS DWG SP
3			THIS DWG SP
4			THIS DWG SP
5			THIS DWG SP
6			THIS DWG SP
7			THIS DWG SP
8			THIS DWG SP
9			THIS DWG SP
10			THIS DWG SP
11			THIS DWG SP
12			THIS DWG SP
13			THIS DWG SP
14			THIS DWG SP
15			THIS DWG SP
16			THIS DWG SP
17			OPENS ON MECH. OVERLOAD ON CLOSING THIS DWG
18			OPENS ON MECH. OVERLOAD ON OPENNING THIS DWG

- REFERENCE DRAWINGS**  
 0-E-0105 - ELECTRICAL WIRING STANDARDS AND SYMBOLS  
 J-E-7578 - CONT. WIRING DIA. RAD. EQUIP & FLR. DRN. SUMP INSIDE CONTMT. ISOL. VLV. ED-064  
 I-Z-3002 - LOGIC DIAGRAM RAD. EQUIP & FLR. DRN. SUMP INSIDE CONTMT. ISOL. VLV. ED-064

**LEGEND**  
 ☒ - MCC EIBI COMPT H2

**TERA APERTURE CARD INFORMATION**  
 THIS DOCUMENT IS SUBJECT TO REVISION WITHOUT NOTIFICATION TO THE USER OF THIS COPY

MECH. EQUIP NO. 7406ITED064

NUCLEAR SAFETY RELATED CLASS I E		
PKG 044A	SUFF 102	ACT 581
DRAWING TITLE ELECTRICAL ELEMENTARY DIAGRAM		CONTRACT NO. SCALE CR-0241 NONE
RAD. EQUIP & FLR. DRN. SUMP INSIDE CONTMT. ISOL. VLV. ED-064		DRAWING NO 4-Q-06 I-E-5578-A

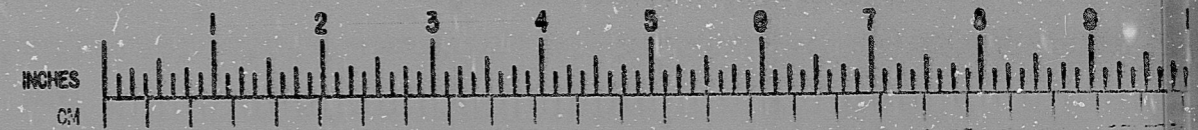
ISSUED FOR USE	DATE	DESCRIPTION	BY	CHK	PROJ. ENGR.	PROJ. MGR.	DATE	DESCRIPTION	BY	CHK	PROJ. ENGR.	PROJ. MGR.
ISSUED FOR USE												

**Brown & Root Inc.**  
 ENGINEERS-CONSTRUCTORS  
 HOUSTON, TEXAS

**SOUTH TEXAS PROJECT**

INFORMATION  PRELIMINARY  REVIEW  USE  CONSTRUCTION

**BROWN & ROOT INC.**  
 MICROFILM SERVICES





RIDS

8112100233

