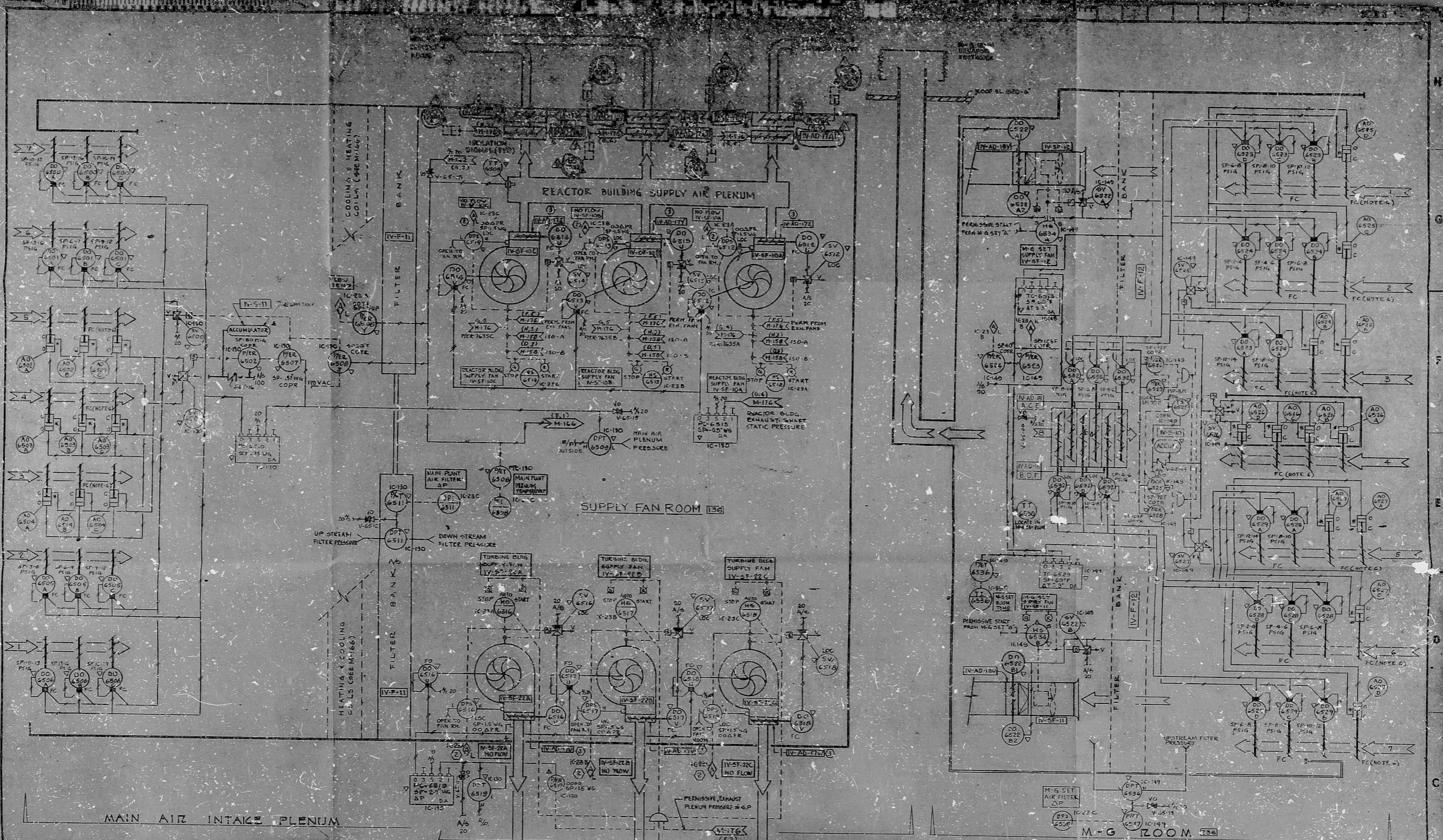
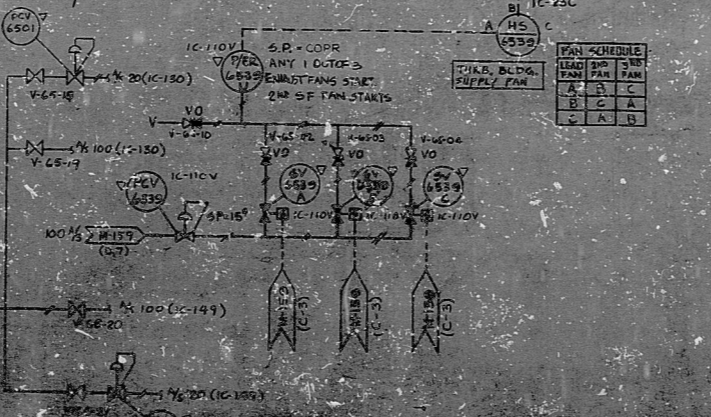
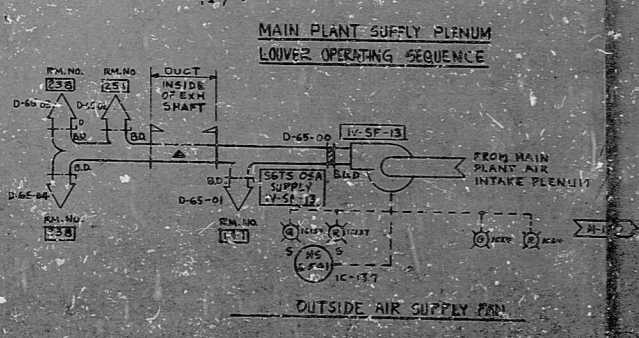


This drawing and the design it covers are the property of BECHTEL. They are hereby loaned to the borrower's express agreement that they will not be reproduced, copied, modified, exhibited, or used except in the manner and for the purposes intended by the lender. Any unauthorized use of this drawing is prohibited.



MAINTENANCE WEIGHTS

CLOSED	0.00" WG	2.46
OPEN	0.50" WG	3.45
MOD. OPEN	1.00" WG	4.45
FULL OPEN	1.50" WG	5.45



OUTSIDE AIR

ROOM TEMP	74°F
73°F	
72°F	
71°F	
70°F	1/200'
69°F	
68°F	
67°F	2/200'
66°F	

RETURN AIR

ROOM TEMP	74°F
73°F	
72°F	
71°F	
70°F	1/200'
69°F	
68°F	
67°F	2/200'
66°F	

- M-G ROOM LOWER OPERATING SEQUENCE
- NOTES:
- * FURNISHED WITH ASSOCIATED EQUIPMENT.
 - ② TIME DELAY FOR ALARMS 30 SEC.
 - ③ DAMPERS FURNISHED WITH ASSOC. FANS.
 - ④ QA SEISMIC CLASS L.
 - ⑤ FOR SYMBOLS AND ABBREVIATIONS SEE M-179.
 - ⑥ FAIL CLOSED WITH AIR INLETOR TANKS.
 - ⑦ 000PR (CONTACT) OPEN ON DIFF. PRESSURE RISE.

FOR INFORMATION ONLY

3/1/54	REVISED PER DOC 525	LC	JK	FC	10
1/1/54	REVISED PER DCR 534	FC	JK	FC	10
5/2/53	REVISED PER DCR 527	MM	JK	FC	10
2/1/53	REVISED PER DCR 525	FC	JK	FC	10
1/1/53	FINAL DESIGN REVIEW AND APPROVED AS NOTED ON REVISION SHEET	FC	JK	FC	10
1/1/53	ISSUED FOR CONSTRUCTION	FC	JK	FC	10

BECHTEL
SAN FRANCISCO

DUANE ARNOLD ENERGY CENTER - UNIT NO. 1
IOWA ELECTRIC LIGHT AND POWER COMPANY
CEDAR RAPIDS, IOWA

P I D
MAIN PLANT AIR INTAKE
AND M-G ROOM

7084 M-165 8

IRC

50-331

8410120294

