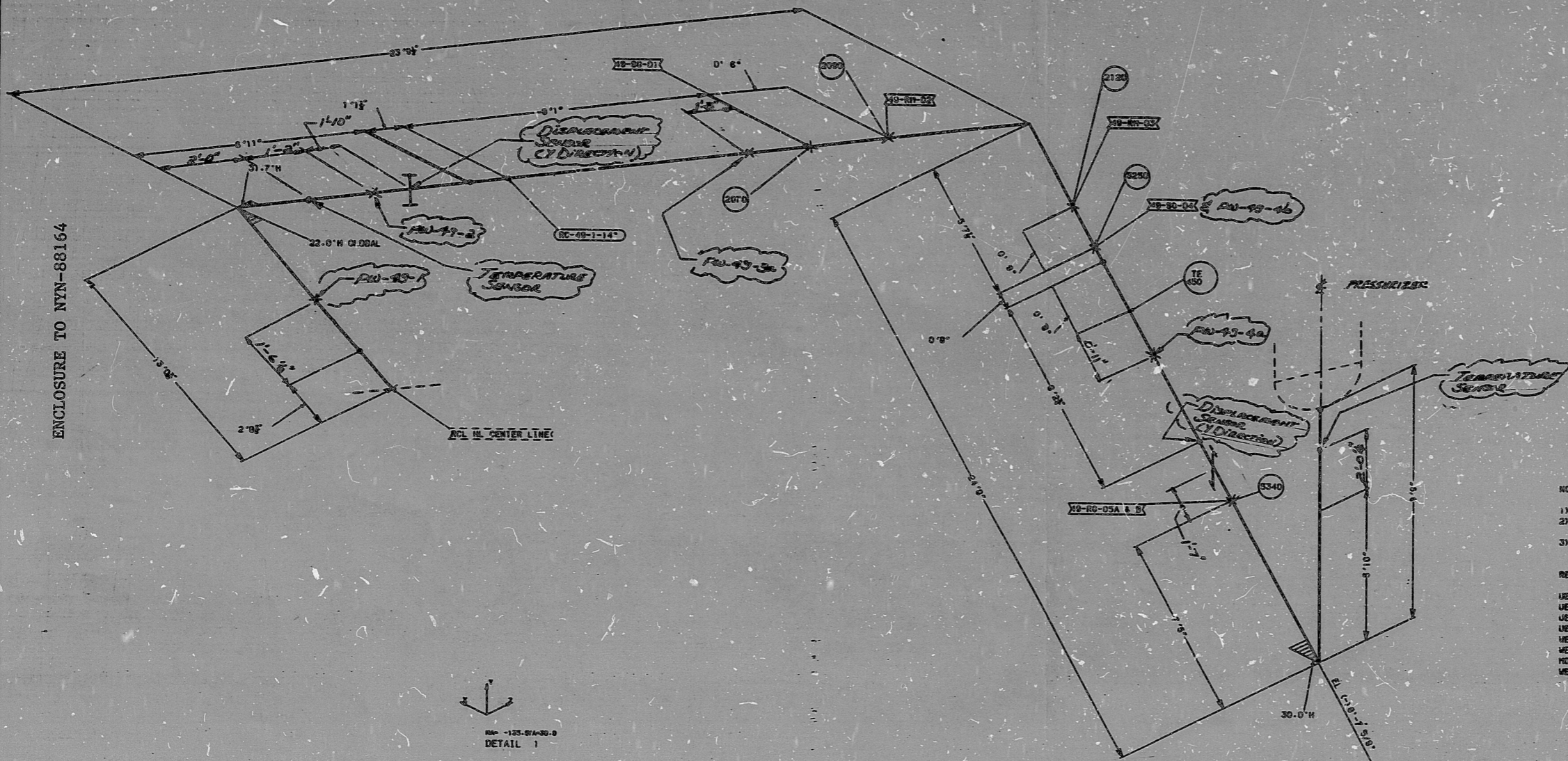


8 | 7 | 6 | 5 | 4 | 3 | 2 | 1

LABEL	SUPPORT INFORMATION TABLE				
	TYPE	DIRECTION			BUDE
		X	Y	Z	
40-99-01	RIGID		A		2070
40-99-02	SUPPORT			A	2070
40-99-03	SUPPORT			A	2120
40-99-04	RIGID		A		2070
40-99-05A	RIGID			A	2070
40-99-05B	RIGID			A	2070



LEGEND:
 ● DUTY WELD
 I SOCKET WELD
 X SUPPORT LOCATION and Pipe Whip Restraint Location

NOTES:
 1) ALL BENDS ARE 5 DIA UNLESS NOTED.
 2) PIPE INSULATION TYPE AND THICKNESS PER UEAC LINE LIST TP-26 REV D PLUS APPLICABLE ECAS.
 3) PIPE INSULATION WEIGHTS PER UEAC MEMORANDUM MW-20060A DATED 4/2/84.

REFERENCES:
 UEAC ISOMETRIC DRAWING 9703-D-000048 REV 5.
 UEAC WELD IDENTIFICATION DRAWING 9703-D-000049 REV 3.
 UEAC PIPE FABRICATION SPEC 9703-005-248-1 REV 10.
 UEAC AUTOMATED VALVE SCHEDULE DATED 8/19/85.
 UEAC PIPE DESIGN SPEC 023102 REV 1.
 WESTINGHOUSE 3-SAKU AS-BUILT WALKDOWN PACKAGE FOR MODEL SURG DATED 9/20/85.
 WESTINGHOUSE EQUIPMENT DRAWING 1101.003 REV 11.

DETAIL 1

SI
 APERTURE
 CARD

REVISION NOTES					
REV.	DATE	AUTHOR	CHECKER	APPROVAL	REVISION DESCRIPTION

WESTINGHOUSE ELECTRIC CORPORATION		
PUBLIC SERVICE CO. OF NEW HAMPSHIRE SEABROOK STATION UNIT 1		
PIPING ISOMETRIC J E & C LINE NO'S. 049		
PADS 3-45	SURGE-DWG	USE CNT. 13
PAGES 3-25	SURGE	USE CNT. 54
NOT TO SCALE		
DWC. NO. SURG-W0048		SHEET 1 OF 1 REV D

8901180347

PDR RIDS

8901180347

