



SIZE E

This drawing and the design it covers are the property of BECHTEL. They are hereby assigned and on the borrower's express agreement that they will not be reproduced, copied, loaned, utilized or used except in the limited way and phrase use permitted by any written consent given by the lender to the borrower.

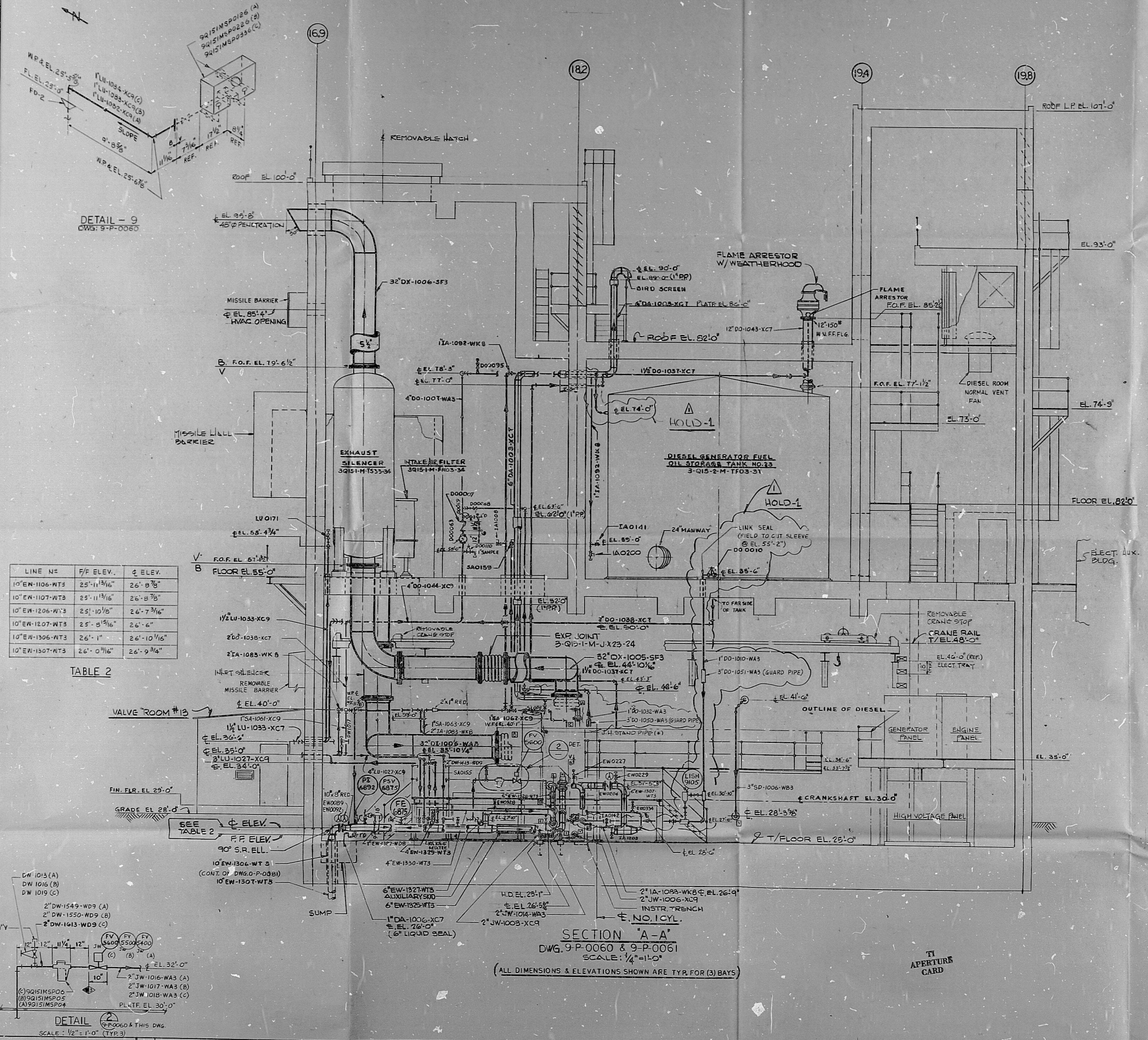
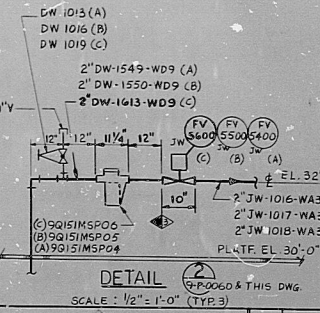


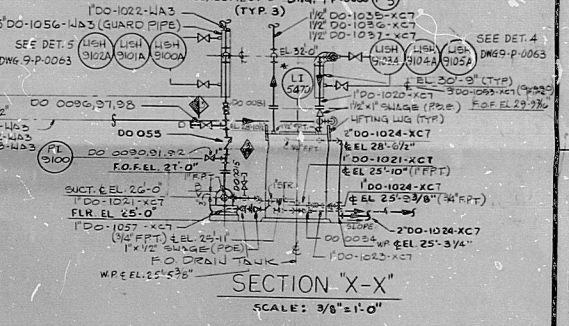
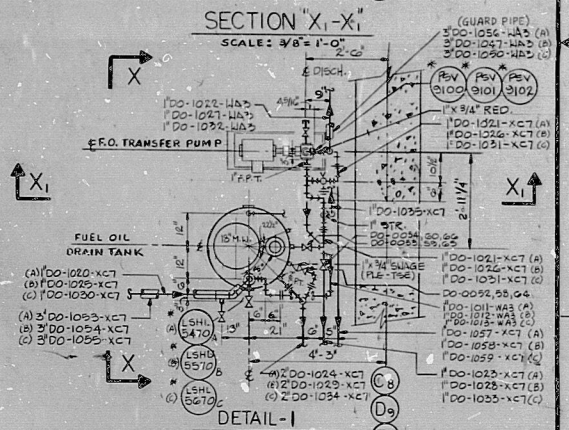
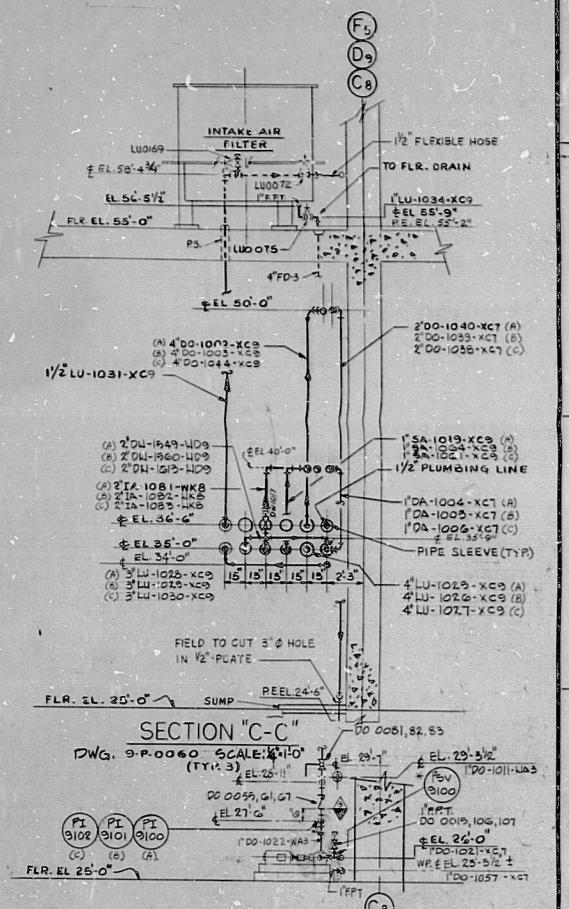
TABLE 2

LINE NO.	R/F ELEV.	± ELEV.
10"EW-1106-WT3	25'-11 1/16"	26'-0 7/8"
10"EW-1107-WT3	25'-11 1/16"	26'-0 7/8"
10"EW-1206-WT3	25'-10 7/8"	26'-7 3/16"
10"EW-1207-WT3	25'-8 3/16"	26'-4"
10"EW-1306-WT3	26'-1"	26'-10 1/16"
10"EW-1307-WT3	26'-0 1/16"	26'-9 3/4"



REVISIONS

NO.	REVISION	DFT	CR	GL	EGS	PEM	DATE
1	ISSUED FOR CONSTRUCTION						12-12-83
2	REVISED AS NOTED (HOLD-1)						1-17-84



NOTE:
 1. FOR GENERAL NOTES & LEGEND SEE DWG. 9-P-0060
 2. HOLD FOR ALL GUARD PIPING.

BECHTEL ENERGY CORPORATION
 HOUSTON, TEXAS
 HOUSTON LIGHTING & POWER CO.
 SOUTH TEXAS PROJECT

8410110355

THIS DRAWING SUPERSEDES B & H DWGS. 50-15-1-0062-5
 50-15-2-0062-3

COMPOSITE PIPING
 DIESEL GENERATOR BUILDING
 SECTION & DETAILS

SCALE	JOB NO.	DRAWING NO.	REV.
AS NOTED	14926	50-15-9-P-0062	1

REVISIONS

NO.	REVISION	DFT	CR	GL	EGS	PEM	DATE
1	ISSUED FOR CONSTRUCTION						12-12-83
2	REVISED AS NOTED (HOLD-1)						1-17-84

PDR RIDS

8410110355

