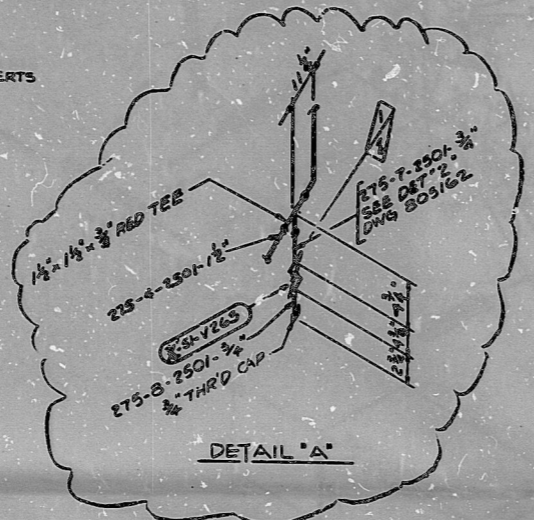
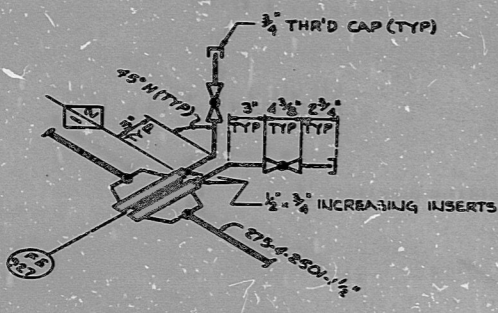
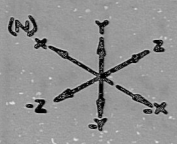
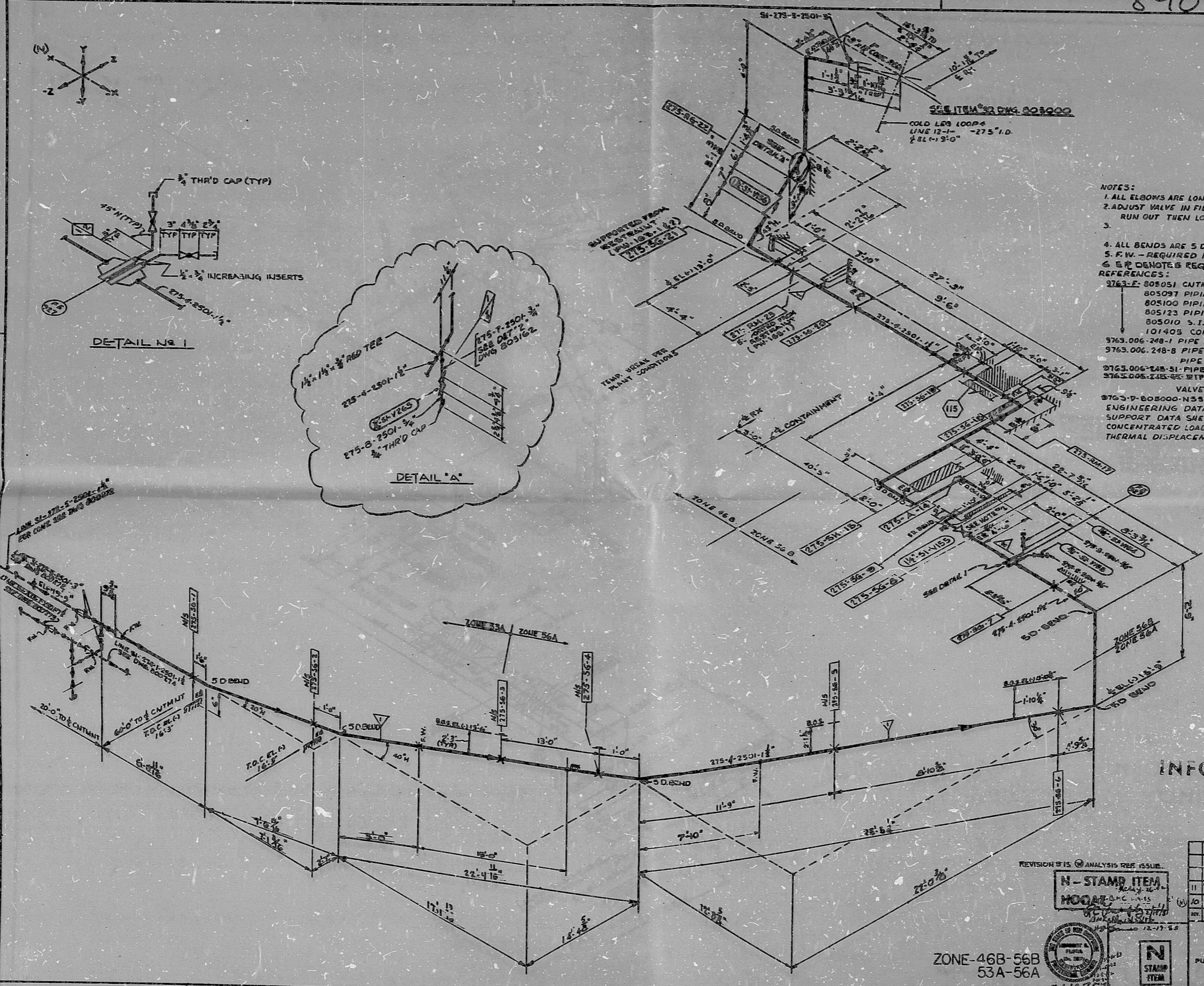


8901090249



NOTES:

1. ALL ELBOWS ARE LONG RADIUS.
2. ADJUST VALVE IN FIELD TO LIMIT PUMP RUN OUT THEN LOCK.
- 3.
4. ALL BENDS ARE 5 DIA. UNLESS NOTED.
5. F.W. - REQUIRED FIELD WELD LOCATION.
6. E.P. DENOTES REQUIRED EMBEDMENT PLATE REFERENCES:

REFERENCES:

- 3763-F: 805051 CONTMNT GENL. ARCT.
- 805097 PIPING PLAN, ZONE 53 B.
- 805100 PIPING PLAN, ZONE 56 B.
- 805123 PIPING PLAN, ZONE 46 B.
- 805010 S.I. SYSTEM P&I DIAGRAM.
- 101403 CONTAINMENT CONCRETE
- 3763.006-248-1 PIPE FABRICATION SPECS.
- 3763.006-248-8 PIPE SUPPORT SPECS.
- 3763.006-248-51 PIPE ERECTION SPEC.
- 3763.006-248-52 PIPE DESIGN SPEC.

VALVE LIST:

- 3763-D-808000-N585 WELD END PRP DETS FOR PIPES.
- ENGINEERING DATA SHEET.
- SUPPORT DATA SHEETS.
- CONCENTRATED LOAD SHEETS.
- THERMAL DISPLACEMENT SHEET.

INFORMATION ONLY

REV.	DATE	DESCRIPTION	BY	CHK.	APP.
11	10/1/83	REV PER ECU-13-2273			
10	10/1/83	REV PER ECU-13-0664			

REVISION 15 ANALYSIS REF. ISSUE.

N - STAMP ITEM
HOOPER

ZONE-46B-56B
 53A-56A



ISOMETRIC PIPING
 SI SYSTEM
 LINE NO. 275
 PUBLIC SERVICE CO. OF NEW HAMPSHIRE
 SEABROOK STATION
 9763-D-800275

8901090249

PDR RIDS

8901090249

