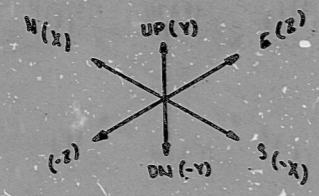
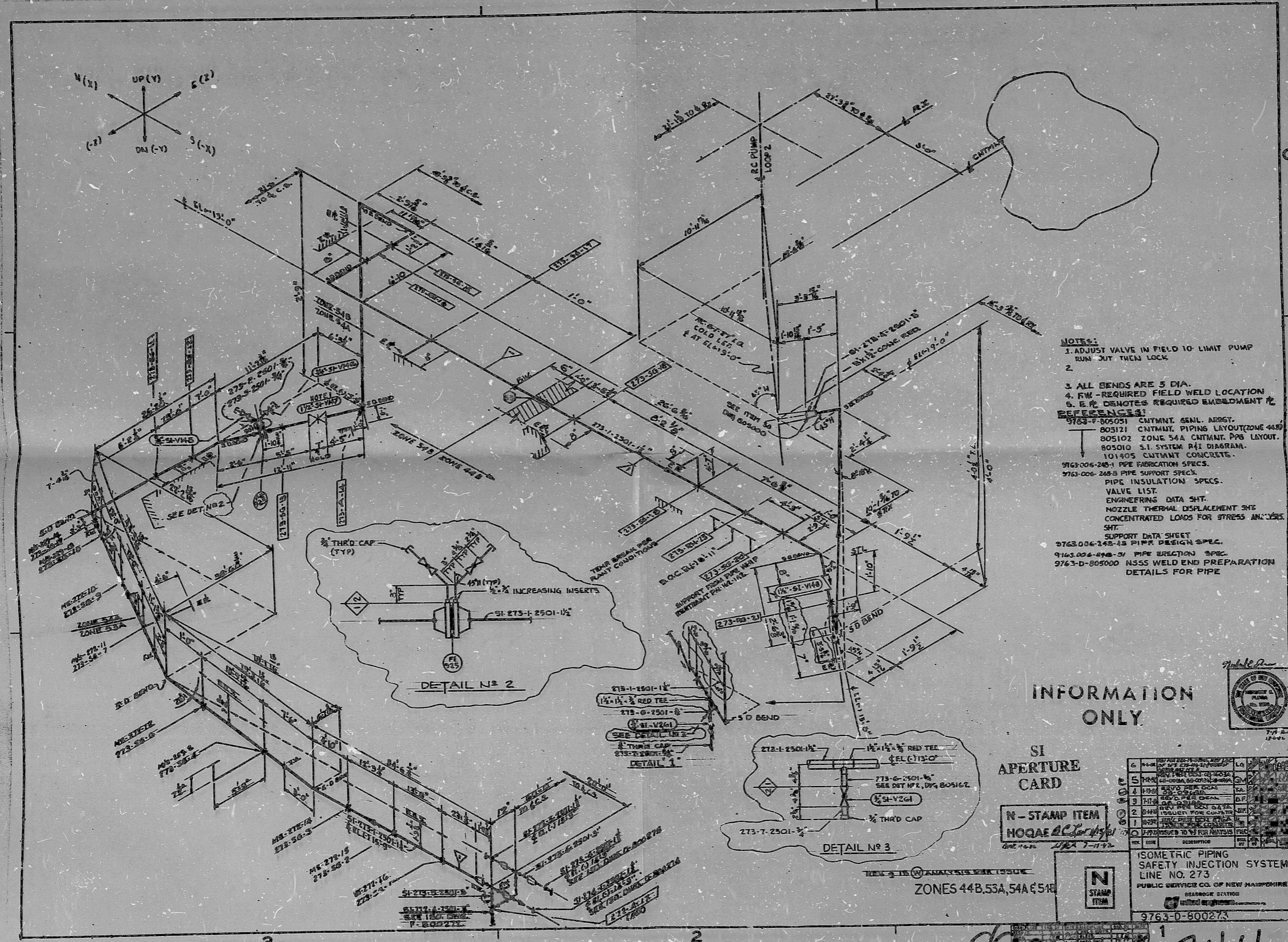
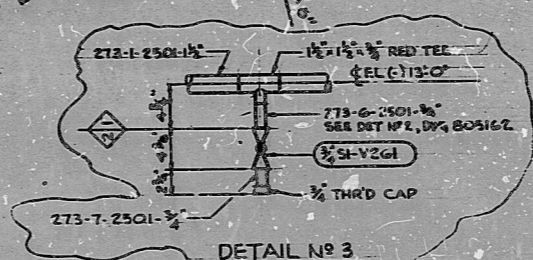
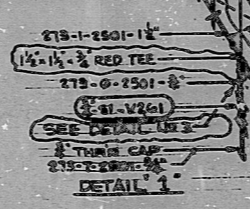
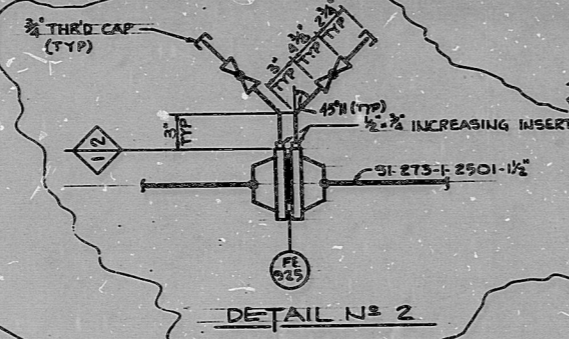


8901090244



- NOTES:**
1. ADJUST VALVE IN FIELD TO LIMIT PUMP RUN JUT THEN LOCK.
 - 2.
 3. ALL BENDS ARE 5 DIA.
 4. FW - REQUIRED FIELD WELD LOCATION
 5. E.P. DIMOTES REQUIRED EMBEDMENT
- REFERENCES:**
- 9763-F-80501 CNTMNT. GENL. ASST.
 - 805121 CNTMNT. PIPING LAYOUT (ZONE 44B)
 - 805102 ZONE 54A CNTMNT. PPS LAYOUT.
 - 805010 S.I. SYSTEM R/I DIAGRAM.
 - 101405 CNTMNT. CONCRETE.
 - 9763-006-248-1 PIPE FABRICATION SPECS.
 - 9763-006-248-3 PIPE SUPPORT SPECS.
 - PIPE INSULATION SPECS.
 - VALVE LIST.
 - ENGINEERING DATA SHIT.
 - NOZZLE THERMAL DISPLACEMENT SHIT
 - CONCENTRATED LOADS FOR STRESS ANALYSIS SHIT.
 - SUPPORT DATA SHEET.
 - 9763-006-248-43 PIPE DESIGN SPEC.
 - 9763-006-248-51 PIPE ERECTION SPEC.
 - 9763-D-805000 N355 WELD END PREPARATION DETAILS FOR PIPE



INFORMATION ONLY

SI APERTURE CARD

N - STAMP ITEM
HOQAE



6	REVISIONS	DATE	BY
5	ISSUED FOR CONSTRUCTION	10/1/73	...
4	ISSUED FOR CONSTRUCTION
3	ISSUED FOR CONSTRUCTION
2	ISSUED FOR CONSTRUCTION
1	ISSUED FOR CONSTRUCTION

ISOMETRIC PIPING
SAFETY INJECTION SYSTEM
LINE NO. 273
PUBLIC SERVICE CO. OF NEW HAMPSHIRE
BRANDS STATION
9763-D-800273

ZONES 44B, 53A, 54A & 54E

8901090244

PDR RIDS

8901090244

