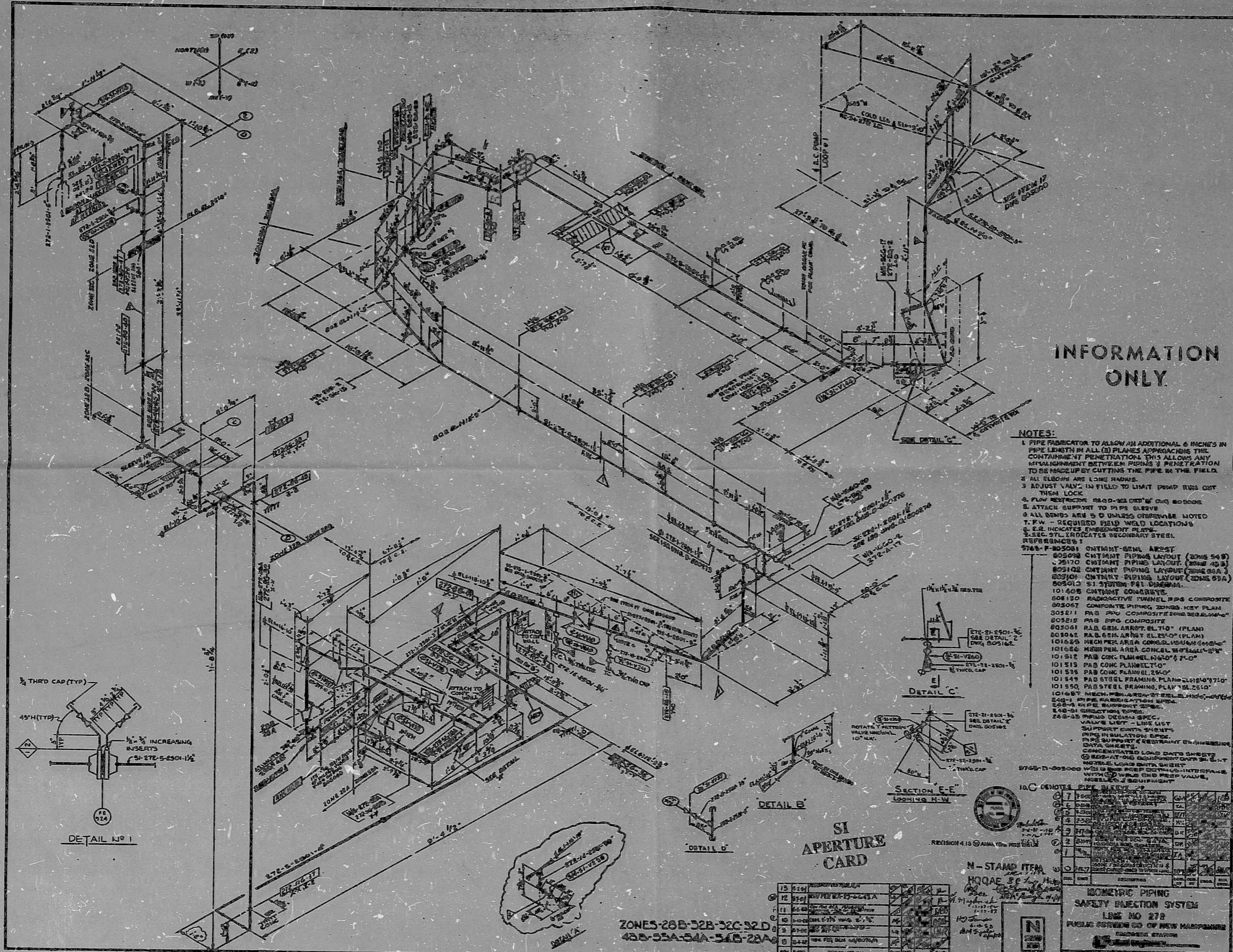
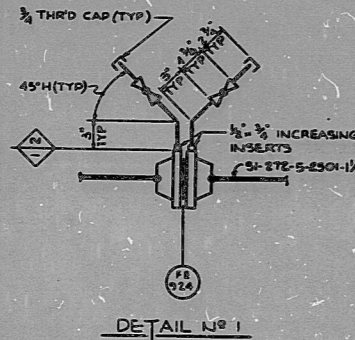


8901090241



INFORMATION ONLY

- NOTES:**
- 1 PIPE FABRICATOR TO ALLOW AN ADDITIONAL 6 INCHES IN PIPE LENGTH IN ALL (D) PLANES APPROXIMATING THE CONTAINMENT PENETRATION THIS ALLOWS ANY MISALIGNMENT BETWEEN PIPING & PENETRATION TO BE MADE UP BY CUTTING THE PIPE IN THE FIELD.
 - 2 ALL FLOORS ARE 12" ON CENTER.
 - 3 ADJUST VALVE IN FIELD TO LIMIT PUMP RUN OUT THEM LOCK.
 - 4 FLOW RESTRICTOR 800-8000'S OR 8000'S.
 - 5 ATTACH SUPPORT TO PIPE SLEEVES.
 - 6 ALL SIZES ARE 5'0" UNLESS OTHERWISE NOTED.
 - 7 F.W. - REQUIRED FIELD WELD LOCATIONS.
 - 8 S.E. INDICATES EMBEDMENT PLATE.
 - 9 S.E.C. 57L INDICATES SECONDARY STEEL REFERENCES:
- 9763-F-00272-1 CONTINENT-GEN. AREA ST.
 - 805098 CONTINENT PIPING LAYOUT (ZONE 54 B)
 - 78170 CONTINENT PIPING LAYOUT (ZONE 40 B)
 - 805102 CONTINENT PIPING LAYOUT (ZONE 50 A)
 - 805104 CONTINENT PIPING LAYOUT (ZONE 50 A)
 - 805103 SI SYSTEM P&ID DIAGRAM.
 - 101408 CONTINENT CONCRETE.
 - 808150 RADIOACTIVE FANBELT SPS COMPOSITE.
 - 805067 COMPOSITE PIPING ZONES KEY PLAN.
 - 805211 P&ID COMPOSITE ZONES 50A-50B.
 - 805218 P&ID SPS COMPOSITE.
 - 805061 P&ID GEN. AREA ST. 710' (PLAN).
 - 805062 P&ID GEN. AREA ST. 710' (PLAN).
 - 101429 MECH. PER. AREA CONCRETE (ZONE 50A).
 - 101430 MECH. PER. AREA CONCRETE (ZONE 50B).
 - 101512 P&ID CONC. FANBELT (24" x 7'0").
 - 101513 P&ID CONC. FANBELT (24" x 7'0").
 - 101514 P&ID CONC. FANBELT (24" x 7'0").
 - 101515 P&ID CONC. FANBELT (24" x 7'0").
 - 101516 P&ID CONC. FANBELT (24" x 7'0").
 - 101517 P&ID CONC. FANBELT (24" x 7'0").
 - 101518 P&ID CONC. FANBELT (24" x 7'0").
 - 101519 P&ID CONC. FANBELT (24" x 7'0").
 - 101520 P&ID CONC. FANBELT (24" x 7'0").
 - 101521 P&ID CONC. FANBELT (24" x 7'0").
 - 101522 P&ID CONC. FANBELT (24" x 7'0").
 - 101523 P&ID CONC. FANBELT (24" x 7'0").
 - 101524 P&ID CONC. FANBELT (24" x 7'0").
 - 101525 P&ID CONC. FANBELT (24" x 7'0").
 - 101526 P&ID CONC. FANBELT (24" x 7'0").
 - 101527 P&ID CONC. FANBELT (24" x 7'0").
 - 101528 P&ID CONC. FANBELT (24" x 7'0").
 - 101529 P&ID CONC. FANBELT (24" x 7'0").
 - 101530 P&ID CONC. FANBELT (24" x 7'0").
 - 101531 P&ID CONC. FANBELT (24" x 7'0").
 - 101532 P&ID CONC. FANBELT (24" x 7'0").
 - 101533 P&ID CONC. FANBELT (24" x 7'0").
 - 101534 P&ID CONC. FANBELT (24" x 7'0").
 - 101535 P&ID CONC. FANBELT (24" x 7'0").
 - 101536 P&ID CONC. FANBELT (24" x 7'0").
 - 101537 P&ID CONC. FANBELT (24" x 7'0").
 - 101538 P&ID CONC. FANBELT (24" x 7'0").
 - 101539 P&ID CONC. FANBELT (24" x 7'0").
 - 101540 P&ID CONC. FANBELT (24" x 7'0").
 - 101541 P&ID CONC. FANBELT (24" x 7'0").
 - 101542 P&ID CONC. FANBELT (24" x 7'0").
 - 101543 P&ID CONC. FANBELT (24" x 7'0").
 - 101544 P&ID CONC. FANBELT (24" x 7'0").
 - 101545 P&ID CONC. FANBELT (24" x 7'0").
 - 101546 P&ID CONC. FANBELT (24" x 7'0").
 - 101547 P&ID CONC. FANBELT (24" x 7'0").
 - 101548 P&ID CONC. FANBELT (24" x 7'0").
 - 101549 P&ID CONC. FANBELT (24" x 7'0").
 - 101550 P&ID CONC. FANBELT (24" x 7'0").
 - 101551 P&ID CONC. FANBELT (24" x 7'0").
 - 101552 P&ID CONC. FANBELT (24" x 7'0").
 - 101553 P&ID CONC. FANBELT (24" x 7'0").
 - 101554 P&ID CONC. FANBELT (24" x 7'0").
 - 101555 P&ID CONC. FANBELT (24" x 7'0").
 - 101556 P&ID CONC. FANBELT (24" x 7'0").
 - 101557 P&ID CONC. FANBELT (24" x 7'0").
 - 101558 P&ID CONC. FANBELT (24" x 7'0").
 - 101559 P&ID CONC. FANBELT (24" x 7'0").
 - 101560 P&ID CONC. FANBELT (24" x 7'0").
 - 101561 P&ID CONC. FANBELT (24" x 7'0").
 - 101562 P&ID CONC. FANBELT (24" x 7'0").
 - 101563 P&ID CONC. FANBELT (24" x 7'0").
 - 101564 P&ID CONC. FANBELT (24" x 7'0").
 - 101565 P&ID CONC. FANBELT (24" x 7'0").
 - 101566 P&ID CONC. FANBELT (24" x 7'0").
 - 101567 P&ID CONC. FANBELT (24" x 7'0").
 - 101568 P&ID CONC. FANBELT (24" x 7'0").
 - 101569 P&ID CONC. FANBELT (24" x 7'0").
 - 101570 P&ID CONC. FANBELT (24" x 7'0").
 - 101571 P&ID CONC. FANBELT (24" x 7'0").
 - 101572 P&ID CONC. FANBELT (24" x 7'0").
 - 101573 P&ID CONC. FANBELT (24" x 7'0").
 - 101574 P&ID CONC. FANBELT (24" x 7'0").
 - 101575 P&ID CONC. FANBELT (24" x 7'0").
 - 101576 P&ID CONC. FANBELT (24" x 7'0").
 - 101577 P&ID CONC. FANBELT (24" x 7'0").
 - 101578 P&ID CONC. FANBELT (24" x 7'0").
 - 101579 P&ID CONC. FANBELT (24" x 7'0").
 - 101580 P&ID CONC. FANBELT (24" x 7'0").
 - 101581 P&ID CONC. FANBELT (24" x 7'0").
 - 101582 P&ID CONC. FANBELT (24" x 7'0").
 - 101583 P&ID CONC. FANBELT (24" x 7'0").
 - 101584 P&ID CONC. FANBELT (24" x 7'0").
 - 101585 P&ID CONC. FANBELT (24" x 7'0").
 - 101586 P&ID CONC. FANBELT (24" x 7'0").
 - 101587 P&ID CONC. FANBELT (24" x 7'0").
 - 101588 P&ID CONC. FANBELT (24" x 7'0").
 - 101589 P&ID CONC. FANBELT (24" x 7'0").
 - 101590 P&ID CONC. FANBELT (24" x 7'0").
 - 101591 P&ID CONC. FANBELT (24" x 7'0").
 - 101592 P&ID CONC. FANBELT (24" x 7'0").
 - 101593 P&ID CONC. FANBELT (24" x 7'0").
 - 101594 P&ID CONC. FANBELT (24" x 7'0").
 - 101595 P&ID CONC. FANBELT (24" x 7'0").
 - 101596 P&ID CONC. FANBELT (24" x 7'0").
 - 101597 P&ID CONC. FANBELT (24" x 7'0").
 - 101598 P&ID CONC. FANBELT (24" x 7'0").
 - 101599 P&ID CONC. FANBELT (24" x 7'0").
 - 101600 P&ID CONC. FANBELT (24" x 7'0").



SI APERTURE CARD

ID	DESCRIPTION	DATE	BY	CHKD
01	ISSUED FOR CONSTRUCTION	10/1/78
02
03
04
05
06
07
08
09
10
11
12
13
14
15
16
17
18
19
20

ZONES-28B-32B-32C-32D
 43B-53A-54A-54B-28A

ISOMETRIC PIPING SAFETY INJECTION SYSTEM
 LINE NO 278
 PIPING BETWEEN 00 OF NEW MAINFRAME
 9763-F-00272

8901090241

PDR RIDS

89 01090241

