

NOTES:

1. THIS LOGIC IS APPLICABLE TO THE FOLLOWING:

	RCP NO. 1	RCP NO. 2	RCP NO. 3	RCP NO. 4
THERMAL BARRIER CCW DISCHG. VALVE	CC-339	CC-374	CC-390	CC-356
THERMAL BARR. CCW DISCHG. FLOW SWITCH	FSH-4619	FSH-4625	FSH-4631	FSH-4637
THERMAL BARR. CCW DISCHG. TEMP SWITCH	TSH-4620	TSH-4626	TSH-4632	TSH-4638
CONTROL ROOM SWITCH & ALARM LOG.	ZCP-001	ZCP-002	ZCP-003	ZCP-003
ELECTRICAL REF. DWG. NO.	1-E-6884	1-E-6885	1-E-6886	1-E-6887

2. THESE VALVES MUST OPERATE DUE TO THEIR EXTREME SERVICE CONDITIONS, AND WILL NOT TRIP ON OVERLOAD.

TERA APERTURE CARD

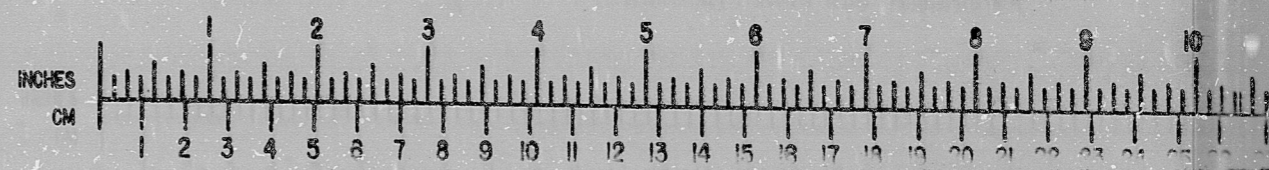
INFORMATION
THIS DOCUMENT IS
SUBJECT TO REVISION
WITHOUT NOTIFICATION
TO THE USER OF THIS
COPY

GENERAL NOTE:
THIS DRAWING REPRESENTS FUNCTIONAL REQUIREMENTS ONLY. REFER TO ELECTRICAL REFERENCE DRAWING FOR HARDWARE IMPLEMENTATION.

NO.	DATE	DESCRIPTION	BY	CHK	PROJ. ENGR.	PROJ. MGR.	ISSUED FOR USE/REV. AS NOTED
D177		REVISED AS NOTED					
C176		NO REVISIONS					
B175		ADD REF. DWG. NOS.					
A174		INITIAL REVIEW					

 Brown & Root Inc. ENGINEERS-CONSTRUCTORS HOUSTON, TEXAS	SOUTH TEXAS PROJECT	DRAWING TITLE	CONTRACT NO. SCALE
		CCW RC PUMPS	CR-0241 N/A
		DISCHARGE VALVES	DRAWING NO. GR-20
		LOGIC DIAGRAM	1-2-3181E
		SYSTEM: R-20	SHT. 7

BROWN & ROOT INC.
MICROFILM SERVICES



FRIDAY, NOV. 18, 1977

RIDS

8112100143

