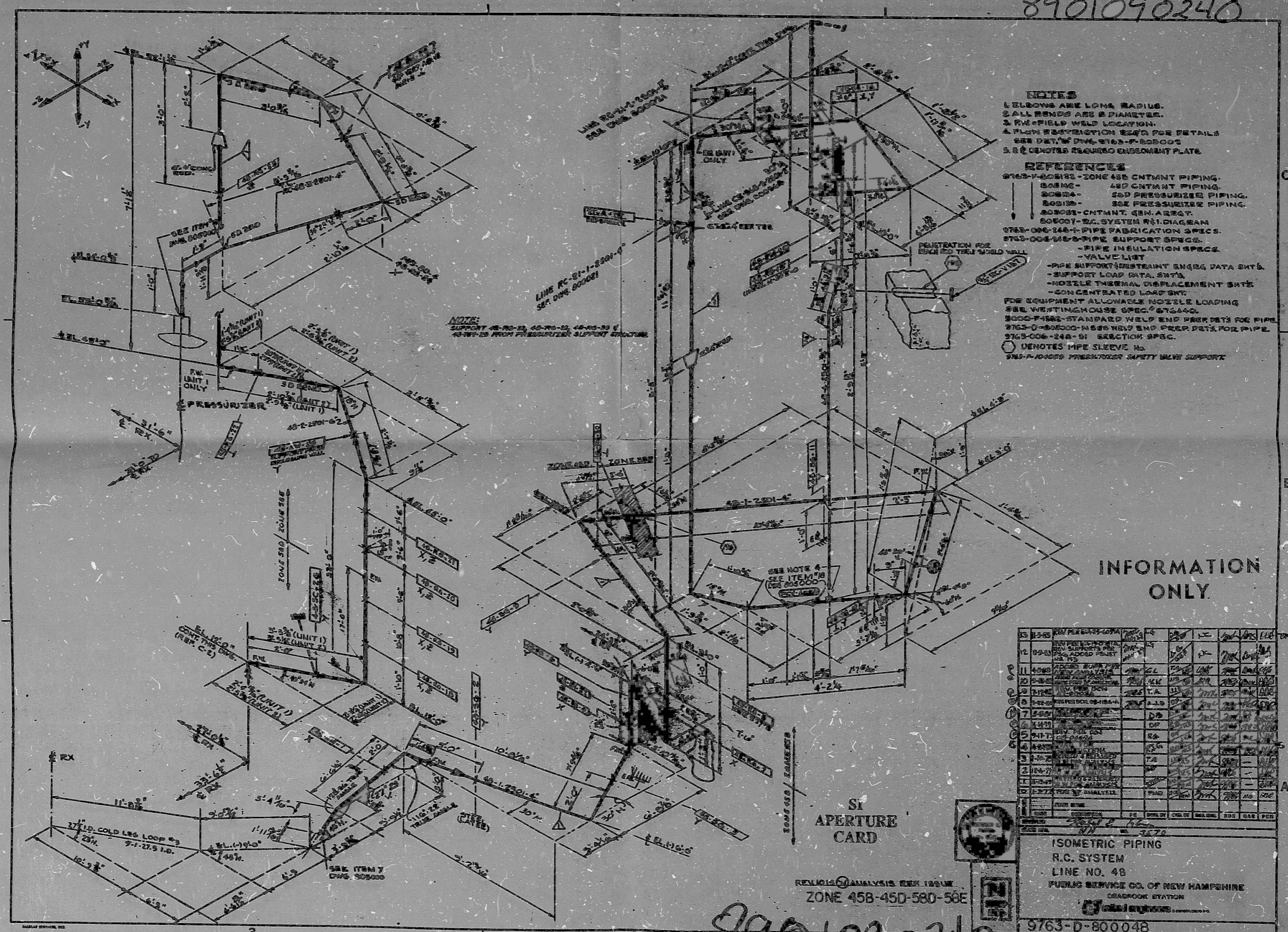


8901090240



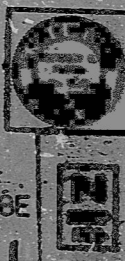
- NOTES**
- ELBOWS ARE LONG RADIUS.
 - ALL BENDS ARE 2 DIAMETER.
 - PIPE WELD LOCATION.
 - ALL WELD RESTRICTION DATA FOR DETAILS SEE DET. OF DWG. 9763-D-800048.
 - SEE DET. FOR REQUIRED ENDMENT PLATE.
- REFERENCES**
- 9763-D-800182 - ZONE 45B CNTMNT PIPING.
 - 808182 - 45B CNTMNT PIPING.
 - 808284 - 45D PRESSURIZER PIPING.
 - 808285 - 45E PRESSURIZER PIPING.
 - 808286 - CNTMNT. (GEN. AREA).
 - 808287 - EQ. SYSTEM P&ID DIAGRAM.
 - 9763-D-800148 - PIPE FABRICATION SPEC.
 - 9763-D-800149 - PIPE SUPPORT SPEC.
 - 9763-D-800150 - PIPE INSULATION SPEC.
 - VALVE LIST.
 - PIPE SUPPORT RESTRAINT ENG'G DATA SHTS.
 - SUPPORT LOAD DATA SHTS.
 - NOZZLE THERMAL DISPLACEMENT SHTS.
 - CONCENTRATED LOAD SHT.
 - FOR EQUIPMENT ALLOWABLE NOZZLE LOADING SEE WESTINGHOUSE SPEC. 672440.
 - 8000-F-1582 - STANDARD WELD END PREP DETS FOR PIPE.
 - 9763-D-800000 - WELD END PREP DETS FOR PIPE.
 - 9763-D-800248 - 91 SECTION SPEC.
 - DENOTES PIPE SLEEVE IN.
 - 9763-D-800000 - PRESSURIZER SAFETY VALVE SUPPORT.

INFORMATION ONLY

NO.	DESCRIPTION	DATE	BY	CHKD	APP'D	REV.
1	ISSUED FOR CONSTRUCTION	11-15-68	J. H. [unclear]	[unclear]	[unclear]	1
2	REVISION	11-15-68	[unclear]	[unclear]	[unclear]	2
3	REVISION	11-15-68	[unclear]	[unclear]	[unclear]	3
4	REVISION	11-15-68	[unclear]	[unclear]	[unclear]	4
5	REVISION	11-15-68	[unclear]	[unclear]	[unclear]	5
6	REVISION	11-15-68	[unclear]	[unclear]	[unclear]	6
7	REVISION	11-15-68	[unclear]	[unclear]	[unclear]	7
8	REVISION	11-15-68	[unclear]	[unclear]	[unclear]	8
9	REVISION	11-15-68	[unclear]	[unclear]	[unclear]	9
10	REVISION	11-15-68	[unclear]	[unclear]	[unclear]	10
11	REVISION	11-15-68	[unclear]	[unclear]	[unclear]	11
12	REVISION	11-15-68	[unclear]	[unclear]	[unclear]	12

SI APERTURE CARD

REVISION ANALYSIS PER ISSUE
ZONE 45B-45D-580-58E



ISOMETRIC PIPING
R.C. SYSTEM
LINE NO. 48
PUBLIC SERVICE CO. OF NEW HAMPSHIRE
DEARBORN STATION
9763-D-800048

8901090240

PDR RIDS

89 01 09 0240

