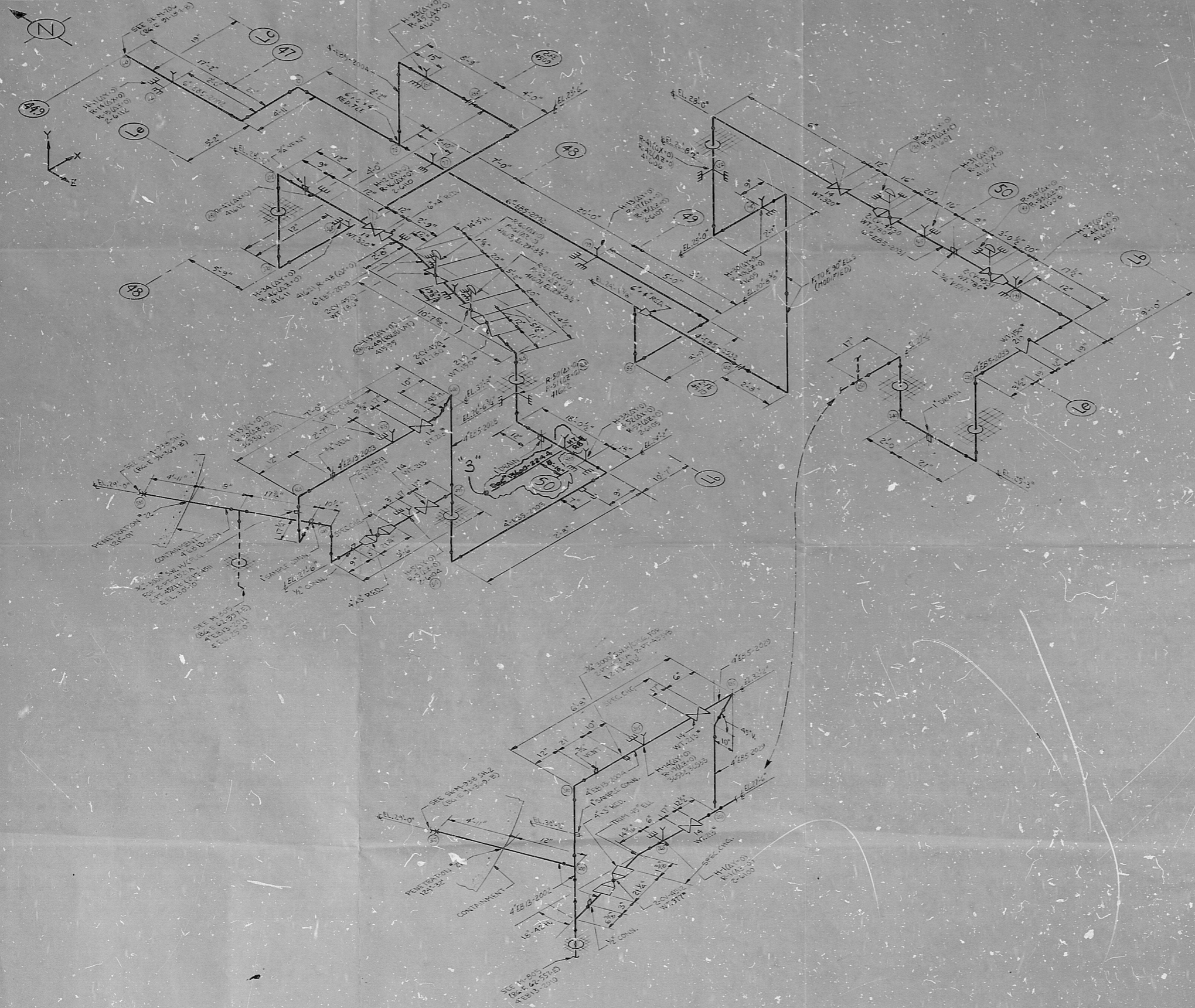


91-368-E

This drawing and the design it covers are the property of BECHTEL. They are hereby loaned and on the borrower's express agreement that they will not be reproduced, copied, leased, exhibited, or used except in the limited way and private use permitted by the borrower.



- NOTES:
1. FOR FURTHER INFORMATION SEE CLASS SUMMARY SHEETS 6750-M-601, PIPING CLASS SHEETS 6750-M-600.
 2. REF DWG. M-420, M-421 & M-422.
 3. AREA 27, AUX. BLDG.
 4. UNIT 2, AS SHOWN UNIT 1, SK-M-937
 5. PIPING CODE B3110
 6. P10 M-931

A
B
C
D
E
F
G
H
J

NOTICE
USERS MUST REFER TO THE
DCN CATALOGS OR A
COMPUTERIZED DCN INDEX
FOR APPLICABLE DCN'S

9901090087

SI
APERTURE
CARD

3	4/6/75	AS BUILT INFO ONLY	JK	WHI	H	W	CC
2	4/1/75	REWORK WITH CHANGES DCN 5185-0001A DCN 5185-0001A DCN 5185-0001A DCN 5185-0001A DCN 5185-0001A	JK	WHI	H	W	CC
NO.	DATE	REVISIONS	BY	CHKD	ENGR	INSTR	APPV
SCALE	CASHED	DRAWN	JAL	CHKD	ENGR	INSTR	APPV

TO BE USED AS A
CONTRACTOR'S DRAWING
ONLY FOR 15 DAYS
AFTER ISSUANCE
DATE OF DEC 15 1988

BALTIMORE GAS & ELECTRIC CO.
CALVERT CLIFFS

BECHTEL POWER CORPORATION

AUX. FEEDWATER

PT. STRAIGHT	SPRING WANDER	ALICOR
T. RIGID HANGER	LP. SLOUSHER	
STRESS ANALYSIS DATA		
MATERIAL	ASTM A106 (GR. B), SMLS, SCH 80	
OPER. TEMP.	TEMP. PERM. PERG	1100/1200
NO. OF ELAS. E. PSI	COLLAPSE	210 x 10 ⁶
POISSON'S RATIO		0.3
EXP. COEFF. W/L IN. / IN. / °F		6.5
LINE O.D. (IN.)		4.50
AVG. WALL THICKNESS (IN.)		0.375
PROB. NO.		39
ISSUE NO.		07

NO.	DCN NO.	DCN NO.	DCN NO.	REV.
11885	91-368-E	SK-M-937	3	

1 2 3 4 5 6 7 8 9 10 11 12 13

PDR RIDS

89 01090087

