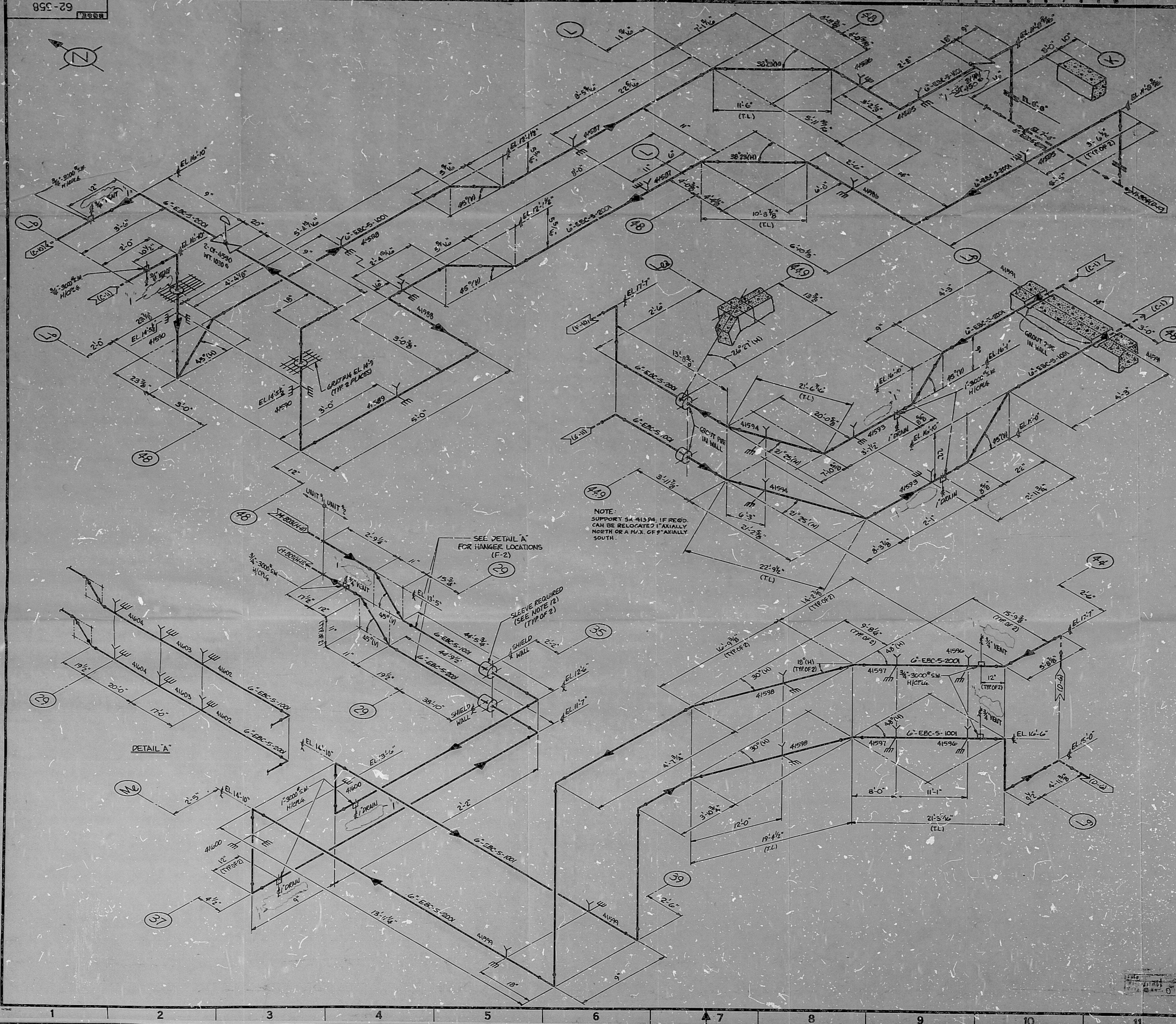


This drawing and the design it covers are the property of BECHTEL. They are hereby loaned and on the borrower's express agreement that they will not be reproduced, copied, loaned, modified, or used except in the limited way and under the limited conditions specified by this loan to the borrower.



NOTE:  
 SUPPORT SH 41374, IF REQD,  
 CAN BE RELOCATED 1' AXIALLY  
 NORTH OR A MAX. OF 2' AXIALLY  
 SOUTH.

DETAIL A

- GENERAL NOTES:
1. FOR PIPING CLASS SPECIFICATIONS SEE 11000-M-8008.
  2. FOR PIPING CLASS SPECIFICATIONS SEE 4200-M-8008.
  3. FOR PIPING 4-BEHEMMENT DIMENSIONS SEE 11000-M-8008.
  4. FOR VALVE LIST SEE 11000-M-8008.
  5. UNLESS OTHERWISE INDICATED, ALL PIPING SHALL BE INSTALLED IN THE HORIZONTAL POSITION.
  6. ALL OF BLOCKS AND LINES SHALL BE UNLESS OTHERWISE NOTED.
  7. FOR INSTALLATION OF PIPING, MUST BE INSTALLED IN THE HORIZONTAL POSITION.
  8. WORK THIS DRAWING WITH DRAWING M-8008.
  9. FOR THE IN CONNECTIONS TO EXISTING PIPING SYSTEMS (COORDINATE SYSTEMS) SEE 11000-M-8008.
  10. FOR SMALL PIPING THIS SYSTEM, SEE DIMS FOR MP-5476 FOR PIPING, FOR MP-4474 FOR INSTRUMENTATION PIPING, FOR MP-4474 FOR INSTRUMENTATION PIPING, FOR MP-4474 FOR INSTRUMENTATION PIPING.
  11. FOR WELD-BOND PREPARATION DETAILS, SEE SH-M-8008.
  12. FOR SHIELD WALL PENETRATION DETAILS, SEE DIMS 11000-M-8008.

SI APERTURE CARD  
 TO BE USED AS A CONTINUED DRAWING ONLY FOR 15 DAYS AFTER ISU CHANGE DATE OF 11/15/88

NOTICE  
 USERS MUST REFER TO THE DCN CATALOGS OR THE COMPUTERIZED DCN INDEX FOR APPLICABLE DCN'S

82010510072

|     |      |           |    |      |       |      |      |      |
|-----|------|-----------|----|------|-------|------|------|------|
| NO. | DATE | REVISIONS | BY | CHKD | GROUP | ENGR | PROJ | APPV |
| 1   |      |           |    |      |       |      |      |      |
| 2   |      |           |    |      |       |      |      |      |
| 3   |      |           |    |      |       |      |      |      |
| 4   |      |           |    |      |       |      |      |      |
| 5   |      |           |    |      |       |      |      |      |
| 6   |      |           |    |      |       |      |      |      |
| 7   |      |           |    |      |       |      |      |      |
| 8   |      |           |    |      |       |      |      |      |
| 9   |      |           |    |      |       |      |      |      |
| 10  |      |           |    |      |       |      |      |      |
| 11  |      |           |    |      |       |      |      |      |
| 12  |      |           |    |      |       |      |      |      |
| 13  |      |           |    |      |       |      |      |      |

**BALTIMORE GAS & ELECTRIC CO.**  
 CALVERT CLIFFS

**BECHTEL POWER CORPORATION**

PIPING ISOMETRIC  
 AUXILIARY FEEDWATER SYSTEM  
 UNIT 2

|         |          |       |           |
|---------|----------|-------|-----------|
| JOB NO. | DATE     | SCALE | REVISIONS |
| 11005   | 62-558-E | M-806 | 1         |



PDR RIDS

89 01090072

