

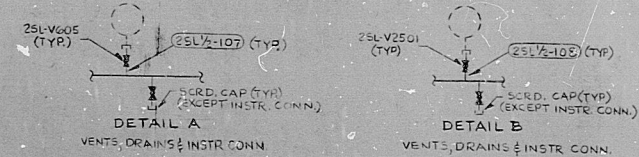
LOU-1564-G-162 SHEET 2 OF 4

ST	RR	DATE	DESCRIPTION
ST 0	RR	7/14/75	75A, 75B
ST 1	RR	7/28/75	75B, 75A, 75B
ST 2	RR	7/31/75	75B, 75A, 75B, 75C

* AREA NOT TRANSFERRED

- NOTES:
- FOR REFERENCE DRAWINGS SEE SHEET 1
 - EQUIPMENT IDENTIFIED WITH THE FOLLOWING CODE LETTERS REQUIRE CLASS 1E POWER SOURCE:
 - CODE: SA SB SC
 - SAMPLE LINES SHALL HAVE A MINIMUM PRACTICABLE LENGTH OF 1' LINE PRIOR TO REDUCER.
 - VALVE STEM LEAKOFFS TO BE RUN IN FIELD TO PLUMBING EQUIPMENT DRAIN LEAKOFFS TO BE 1/2" S&B SET PIPING NO. 75L174-176
- *** SUPPLIED BY VENDOR
 ** SUPPLIED BY IFC

**NUCLEAR SAFETY
RELATED IN PART ONLY**



NO.	DATE	REVISION	BY	CHK.	APPROVED	NO.	DATE	REVISION	BY	CHK.	APPROVED
10	6/1/76	INC(F) DCN-MP-944	JDG	JWR		7	3/5/74	REVISED FOR 1E POWER SOURCE	JUN	NS	
11	11/27/75	INC(K) DCN-MP-930	JDG	GB		8	3/7/74	REVISED FOR 1E POWER SOURCE	JUN	NS	
9	10/1/73	INC(L) DCN-MP-832	CAL	GB		5	2/22/71	REVISED FOR 1E POWER SOURCE	JUN	NS	
10	7/1/73	NO CHANGE FOR IMPROVED	RJA	WJ		4	5/14/70	REVISED FOR 1E POWER SOURCE	JUN	NS	
8	4/1/73	INC(M) DCN-MP-832	EA	GB		3	1/1/70	REVISED FOR 1E POWER SOURCE	JUN	NS	

THIS DOCUMENT IS THE PROPERTY OF CHASCO SERVICES INCORPORATED. IT IS LOANED TO YOU IN CONFIDENCE AND UPON THE CONDITION THAT YOU WILL NOT DISSEMINATE OR USE IN ANY MANNER THE INFORMATION CONTAINED HEREIN WITHOUT THE WRITTEN PERMISSION OF CHASCO SERVICES INCORPORATED.

LOUISIANA POWER & LIGHT COMPANY
 WATERFORD S.E. UNIT NO. 3
 1377-1165 MW INSTALLATION
 FLOW DIAGRAM
 SAMPLING SYSTEM

CHASCO SERVICES INCORPORATED
 SCALE NONE
 DATE 2/5/75
 BY MESH
 LOU-1564
 G-162
 SHEET 2 OF 4

8410090299

PDR RIDS

