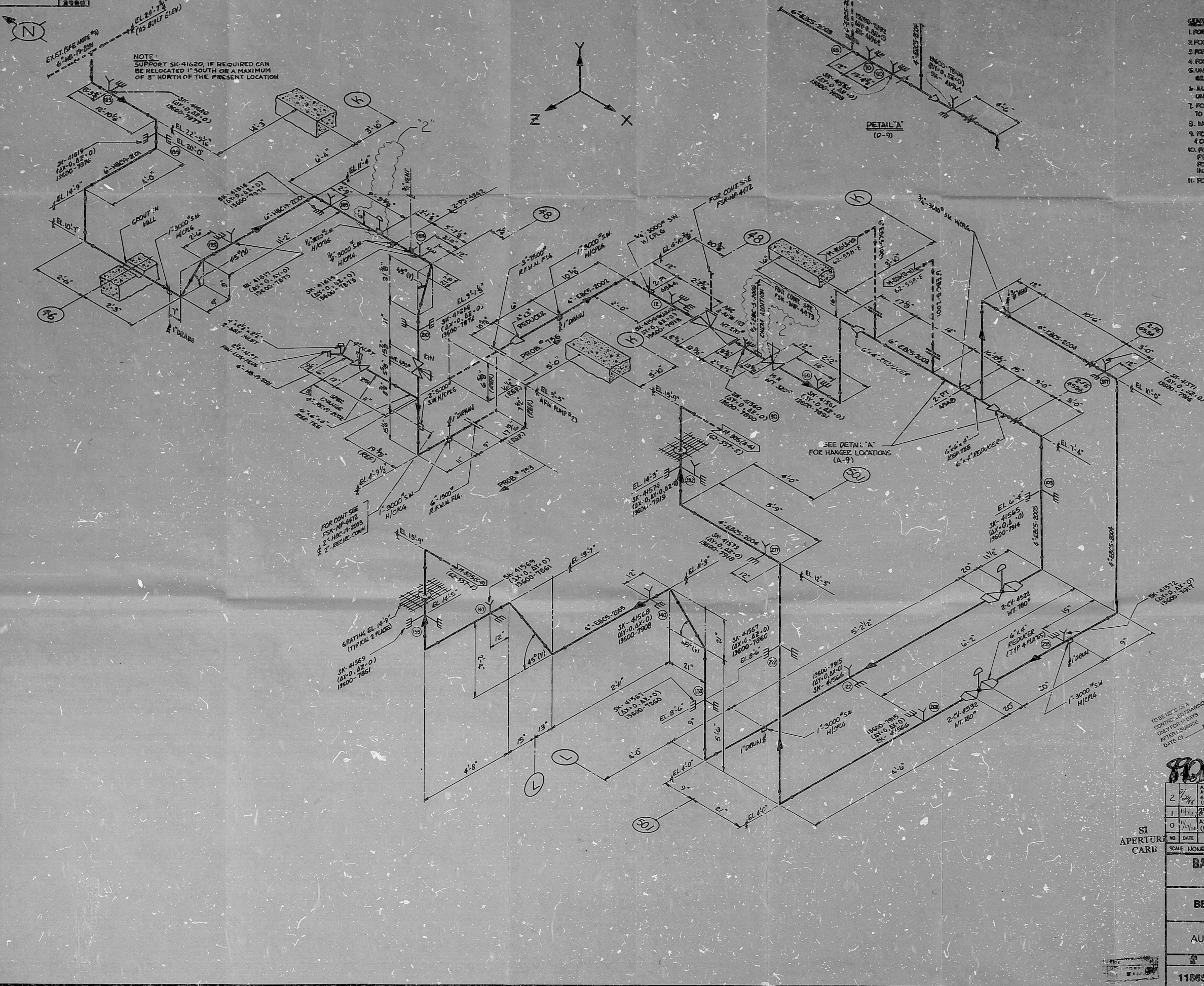


This drawing and the design it covers are the property of BECHTEL. They are hereby loaned and on the borrower's express agreement that they will not be reproduced, copied, loaned, exhibited, or used except in the limited way and for the limited purposes specified by this loan agreement.



- GENERAL NOTES:**
1. FOR PIPING CLASS SHEETS SEE 11846-M-6006
 2. FOR PIPING CLASS INSTRUMENT SHEETS SEE 11846-M-601
 3. FOR PIPING CLASS INSTRUMENT DRAWINGS SEE 11846-M-601
 4. FOR MASTER VALVE LIST SEE M-601
 5. UNLESS OTHERWISE INDICATED NO ALLOWANCE HAS BEEN MADE FOR WELD JOINTS OR GASKETS.
 6. ALL 90° ELBOWS ARE LONG RADII UNLESS OTHERWISE NOTED.
 7. FOR INSTALLATION OF PIPING INSTRUMENT CONNECTIONS TO BE INSTALLED IN THE HORIZONTAL POSITION.
 8. CHECK THIS DRAWING WITH ONE M-601 (M-601).
 9. FOR THE IN-PLANT CONNECTIONS TO EXISTING AFW SYSTEM (CONDENSATE SYSTEM) SEE ONE M-601 (M-601).
 10. FOR SMALL PIPING THIS SYSTEM, SEE ONE M-601 (M-601) FOR SMALL PIPING THIS SYSTEM, SEE ONE M-601 (M-601) FOR SMALL PIPING THIS SYSTEM, SEE ONE M-601 (M-601).
 11. FOR WELD-BOND PREPARATION DETAILS, SEE ONE M-601 (M-601).

PROB. NO.	756	773
ISSUE NO.	02	02

NOTICE
 USERS MUST REFER TO THE
 LCN CATALOGS OF THE
 COMPUTERIZED DCN INDEX
 FOR APPLICABLE DCN'S
 3-1-58

SI
 APERTURE
 CARD

NO.	DATE	REVISIONS	BY	CHK	GROUP	ENGR	DRW	APP
2	1/2/58	AS BUILT (DCN 84-1-513)						
1	1/1/58	AS BUILT (DCN 84-1-513)						
0	1/1/58	(FCR 79-1022)						

SCALE: NONE

DESIGNED: [Signature]

DRAWN: [Signature]

BALTIMORE GAS & ELECTRIC CO.
 CALVERT CLIFFS

BECHTEL POWER CORPORATION

PIPING ISOMETRIC
 AUXILIARY FEEDWATER SYSTEM
 UNIT 2

NO.	DCN NO.	DCN TITLE	REV.
11885	62-556-E	M-804	2

PDR RIDS

8901090063

