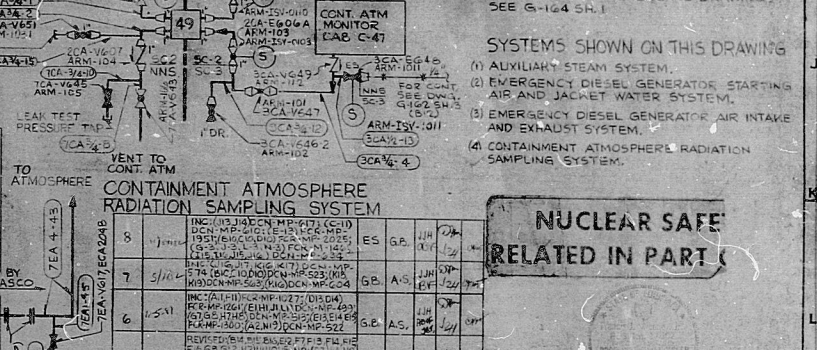
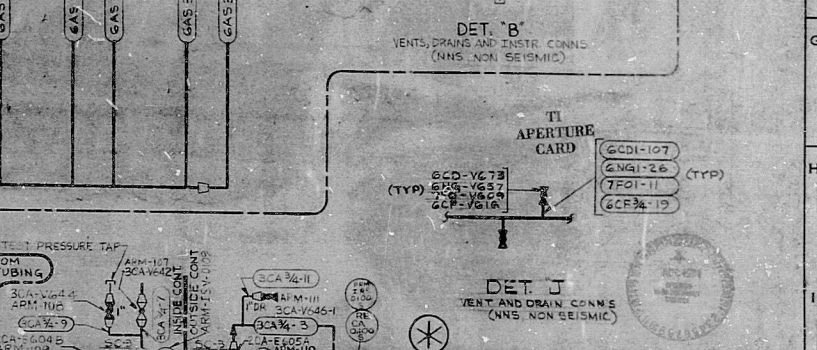
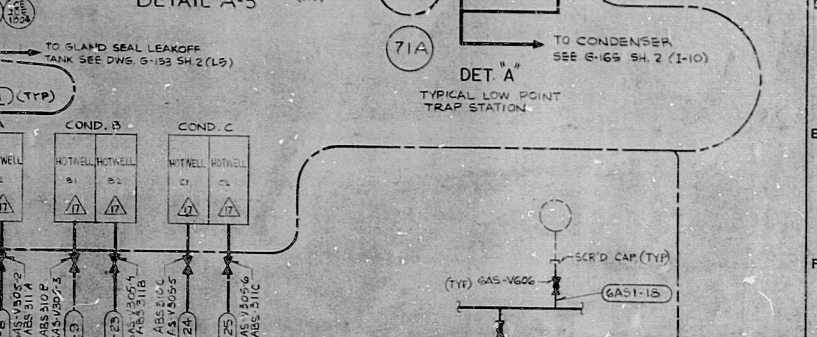
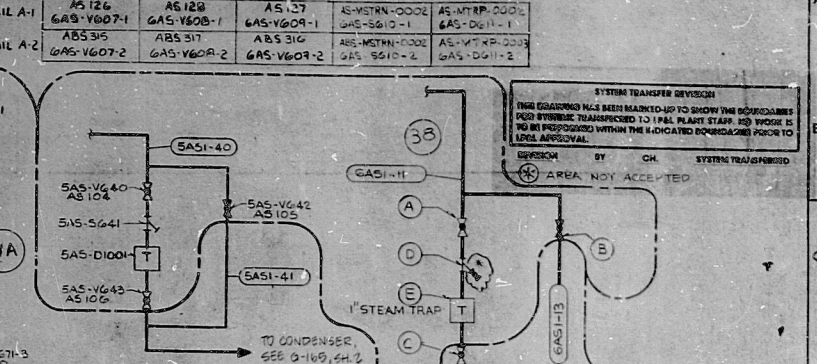
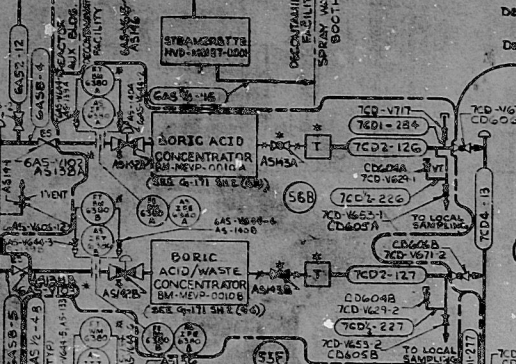
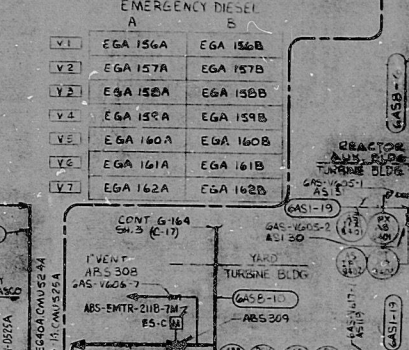
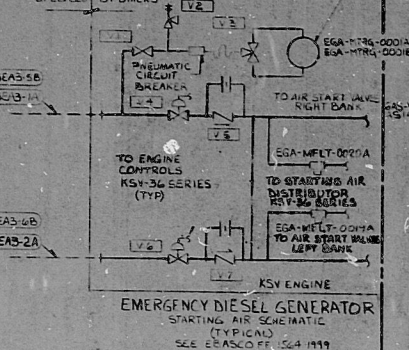


LOU-1564-G-164 SHEET 2 OF 4

NO.	DATE	REVISION	BY	CHK	APPROVED
17	7/7/77	INCORP. (2) DCM-MP-223, (2) DCM-MP-242 R2	E.T. AV		

AIR DRYER			
A1	B1	A2	B2
EGA 109A	EGA 109B	EGA 109A	EGA 099
EGA 111A	EGA 111B	EGA 110A	EGA 110B
EGA 113A	EGA 113B	EGA 112A	EGA 112B
EGA 115A	EGA 115B	EGA 114A	EGA 114B
EGA 117A	EGA 117B	EGA 116A	EGA 116B
EGA 119A	EGA 119B	EGA 118A	EGA 118B
EGA 121A	EGA 121B	EGA 120A	EGA 120B
EGA 123A	EGA 123B	EGA 122A	EGA 122B
EGA 125A	EGA 125B	EGA 124A	EGA 124B
EGA 127A	EGA 127B	EGA 126A	EGA 126B
EGA 129A	EGA 129B	EGA 128A	EGA 128B
EGA 131A	EGA 131B	EGA 130A	EGA 130B
EGA 133A	EGA 133B	EGA 132A	EGA 132B



CONTAINMENT ATMOSPHERE RADIATION SAMPLING SYSTEM

NO.	DATE	REVISION	BY	CHK	APPROVED
16	7/7/77	INCORP. (2) DCM-MP-223, (2) DCM-MP-242 R2	E.T. AV		
15	7/7/77	INCORP. (2) DCM-MP-223, (2) DCM-MP-242 R2	E.T. AV		
14	7/7/77	INCORP. (2) DCM-MP-223, (2) DCM-MP-242 R2	E.T. AV		
13	7/7/77	INCORP. (2) DCM-MP-223, (2) DCM-MP-242 R2	E.T. AV		
12	7/7/77	INCORP. (2) DCM-MP-223, (2) DCM-MP-242 R2	E.T. AV		
11	7/7/77	INCORP. (2) DCM-MP-223, (2) DCM-MP-242 R2	E.T. AV		
10	7/7/77	INCORP. (2) DCM-MP-223, (2) DCM-MP-242 R2	E.T. AV		
9	7/7/77	INCORP. (2) DCM-MP-223, (2) DCM-MP-242 R2	E.T. AV		

**NUCLEAR SAFE RELATED IN PART**

THIS DOCUMENT IS THE PROPERTY OF EASCO SERVICES INCORPORATED. IT IS LOANED TO YOU IN CONFIDENCE AND UNDER THE CONDITION THAT IT WILL BE RETURNED TO THE COMPANY OR DESTROYED BY YOU AT THE END OF THE LOAN PERIOD. IT IS NOT TO BE REPRODUCED, COPIED, DISCLOSED OR USED IN WHOLE OR IN PART WITHOUT THE WRITTEN PERMISSION OF EASCO SERVICES INCORPORATED.

LOUISIANA POWER & LIGHT COMPANY  
WATERFORD 6 E.S. UNIT NO.3  
1977-1165 MW INSTALLATION  
FLOW DIAGRAM  
MISCELLANEOUS REACTOR  
AUXILIARY SYSTEMS

EASCO SERVICES INCORPORATED

NO. DATE REVISION BY CHK APPROVED

LOU-1564-G-164 SHEET 2 OF 4

22  
11  
11  
59  
8.5  
11  
17  
22

22  
11  
11  
8.5  
11  
17  
22

PDR RIDS

8410090297

