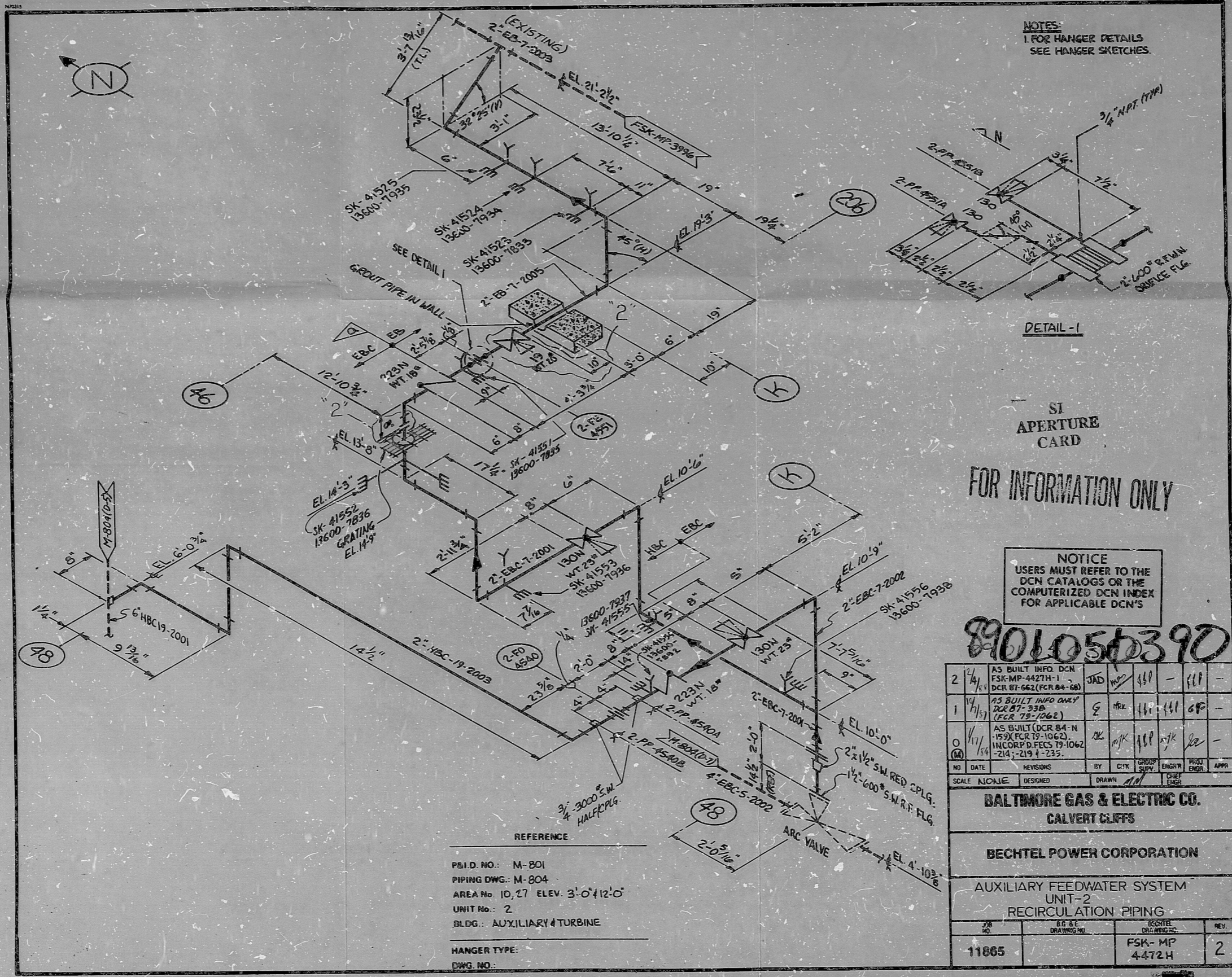
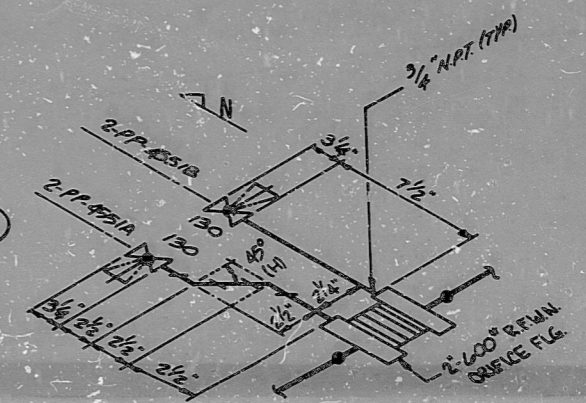


This drawing and the design it covers are the property of BECHTEL. They are hereby loaned and on the borrower's express agreement they will not be reproduced, copied, loaned, exhibited, or used except in the limited way and for the purposes permitted by any written consent given by the lender to the borrower.



NOTES:
1. FOR HANGER DETAILS
SEE HANGER SKETCHES.



DETAIL - 1

SI
APERTURE
CARD

FOR INFORMATION ONLY

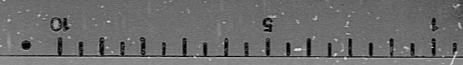
NOTICE
USERS MUST REFER TO THE
DCN CATALOGS OR THE
COMPUTERIZED DCN INDEX
FOR APPLICABLE DCN'S

8901050390

NO.	DATE	REVISIONS	BY	CHK	GROUP	ENGR	PROJ	APPR
2	2/14/68	AS BUILT INFO DCN FSK-MP-44274-1 DCR 87-662 (FCR 84-68)	JAD	MP	GB	-	ELL	-
1	10/1/67	AS BUILT INFO DCN DCR 87-338 (FCR 79-1062)	E	MP	GB	-	GF	-
0	11/1/64	AS BUILT (DCR 84-N-159) (FCR 19-1062) HUCORP DCR'S 79-1062-214-219, 4-235.	JK	MP	GB	-	RE	-

SCALE	NONE	DESIGNED	DRAWN	JAD	CHEF
BALTIMORE GAS & ELECTRIC CO. CALVERT CLIFFS					
BECHTEL POWER CORPORATION					
AUXILIARY FEEDWATER SYSTEM UNIT-2 RECIRCULATION PIPING					
JOB NO.	11865	DCN NO.	FSK-MP-44274	REV.	2

REFERENCE
P&ID NO.: M-801
PIPING DWG.: M-804
AREA No. 10,27 ELEV. 3'-0" TO 12'-0"
UNIT No.: 2
BLDG.: AUXILIARY 4 TURBINE
HANGER TYPE:
DWG. NO.:



PDR RIDS

89 01050390

