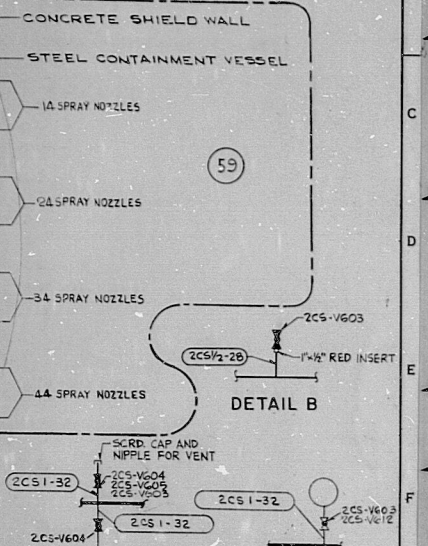


SYSTEM TRANSFER DIVISION

THIS DRAWING HAS BEEN MADE UP TO SHOW THE BOUNDARIES FOR SYSTEMS TRANSFERRED TO UPPL PLANT TEAM. NO WORK IS TO BE PERFORMED WITHIN THE INDICATED BOUNDARIES PRIOR TO UPPL APPROVAL.

REVISION	BY	CHK	SYSTEM TRANSFERRED
ST 0	RR	WJL	55A, 55.53, 71P
ST 1	RR	WJL	53A, 62
ST 2	RR	WJL	46C, 60B, 66, 61



- NOTES:**
1. VALVE STEM LEAKOFFS TO BE RUN IN FIELD TO PLUMBING EQUIPMENT DRAINS. LEAKOFFS TO BE 1/2" SCH 80 SST PIPE (LINE NOTES 55-53).
 2. DENOTES REFERENCE PIPING.
 3. EQUIPMENT IDENTIFIED WITH THE FOLLOWING CODE LETTERS REQUIRE CLASS II POWER SOURCE:

SA	SB	SAB
A.C. POWER	A.C. POWER	A.C. POWER
 4. TO WASTE TANK VIA PLUMBING EQUIPMENT DRAIN.
 5. TO EQUIP. 22" TANK VIA PLUMBING EQUIPMENT DRAIN.
 6. FOR COMPARTMENTED DETAILS SEE 1964-B-431.
 7. * INDICATES VESSEL SUPPLIED.
 8. THE REFUELING WATER STORAGE POOL AND LINER AND THE REFUELING CAVITY AND LINER ARE CLASSIFIED AS SEISMIC CAT. 3 UNDER THE 10 CFR 50 APPENDIX B REQUIREMENTS. THE LINER AND NOZZLES ARE CONSTRUCTED TO MEET SEISMIC CODE REQUIREMENTS USING ASME SECTION III MATERIALS.
- REFERENCE DRAWINGS**
- 1. VALVES AND SPECIALTIES LIST --- 1964-B-431
 - 2. PIPING LINE LIST --- 1964-B-431
 - 3. INSTRUMENT SCHEMATICS AND LOGIC DIAGS. (PIPE, VALVES AND INSTR. SYMBOLS) --- 1964-B-431
 - 4. INSTRUMENT LIST --- 1964-B-431

REACTOR CONTAINMENT BUILDING

NO.	DATE	REVISION	BY	CHK	APPROVED
10	6/23/83		CS	JWL	JWL
11	11/1/83		CV	JWL	JWL
12	11/1/83		CV	JWL	JWL
13	11/1/83		CV	JWL	JWL
14	11/1/83		CV	JWL	JWL
15	11/1/83		CV	JWL	JWL
16	11/1/83		CV	JWL	JWL
17	11/1/83		CV	JWL	JWL
18	11/1/83		CV	JWL	JWL
19	11/1/83		CV	JWL	JWL

THIS DOCUMENT IS THE PROPERTY OF EBASCO SERVICES INCORPORATED. IT IS LOANED IN CONFIDENCE AND UPON THE CONDITION THAT IT NOT BE REPRODUCED, COPIED, DISCLOSED OR USED IN WHOLE OR IN PART EXCEPT FOR THE PURPOSES SPECIFIED IN WRITING BY EBASCO SERVICES INCORPORATED.

LOUISIANA POWER & LIGHT COMPANY
WATERFORD S.E.S. UNIT NO. 3
1977-1165 MW INSTALLATION
CONTAINMENT SPRAY B
REFUELING WATER STORAGE POOL
FLOW DIAGRAM

EBASCO SERVICES INCORPORATED NEW YORK
SCALE NONE
APPROVED: *[Signature]* DATE 11/1/83
DR. MECH. *[Signature]*
DR. CIVIL ENGR. *[Signature]*
CH. E. *[Signature]*

LOU-1564
G-163

22"
11"
11"
8.5"
11"
17"
22"

22"
11"
11"
8.5"
11"
17"
22"

34"

8410090292

PDR RIDS

