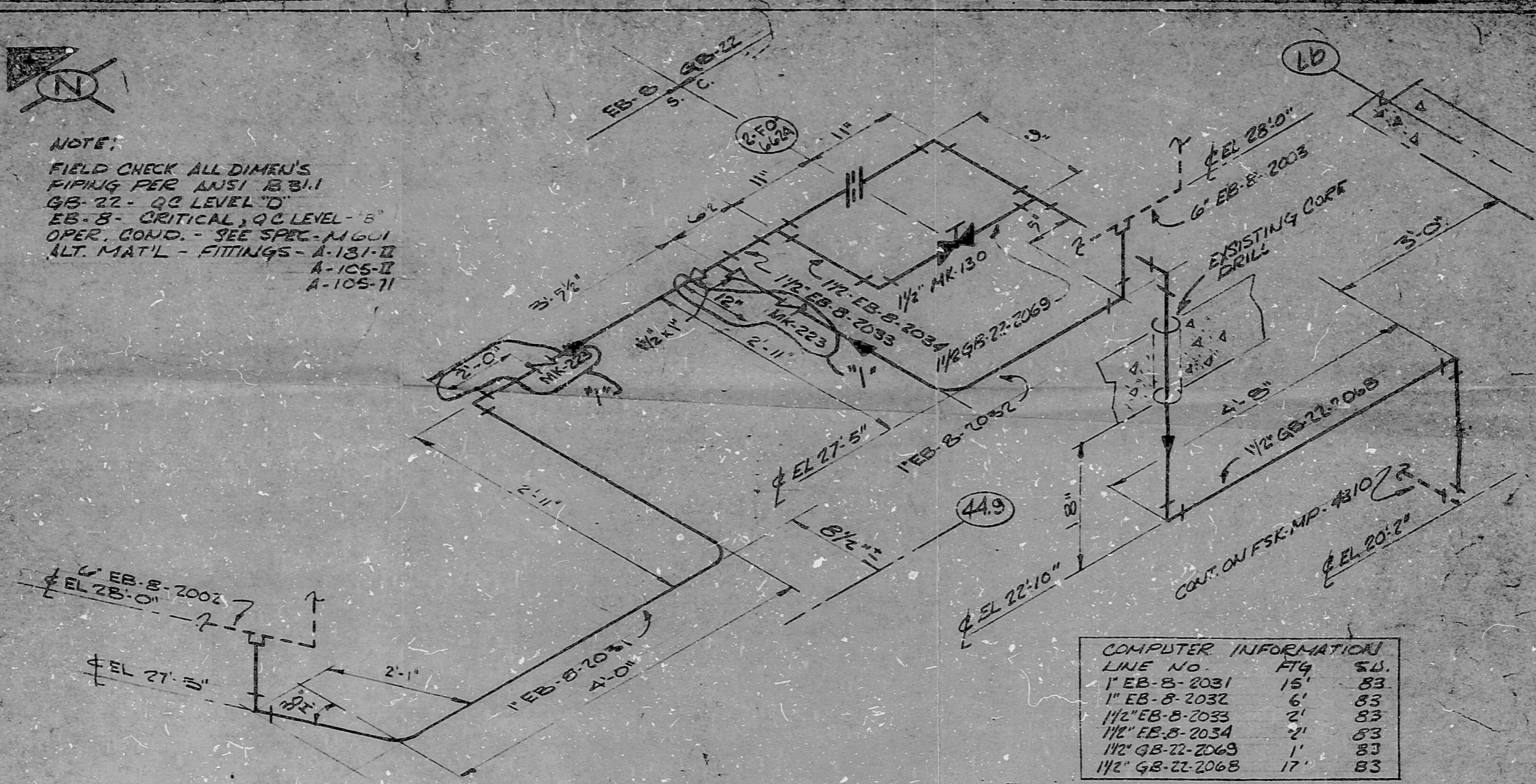


NOTE:

FIELD CHECK ALL DIMEN'S
 PIPING PER ANSI B31.1
 GB-22 - Q3 LEVEL 'D'
 EB-8 - CRITICAL, Q3 LEVEL 'B'
 OPER. COND. - SEE SPEC-MG01
 ALT. MAT'L - FITTINGS - A-131-D
 A-105-11

This drawing and the design it covers are the property of BECHTEL. They are loaned to the borrower's use and are not to be reproduced, copied, loaned, exhibited, or used except in accordance with the terms and conditions of the loan agreement.



COMPUTER INFORMATION		
LINE NO.	FIG.	SD.
1" EB-8-2031	15	83
1" EB-8-2032	6	83
1 1/2" EB-8-2033	2	83
1 1/2" EB-8-2034	2	83
1 1/2" GB-22-2069	1	83
1 1/2" GB-22-2068	17	83

SI
 APERTURE
 CARD

FOR INFORMATION ONLY
 8901050389

QTY	DESCRIPTION	HEAT NO.	ASTM NO.	GRD STR.	REQUISITION
3	1" 90° EL 3000# SW		A-131	Z	
1	1 1/2" 90° EL 3000# SW		"	"	
1	1 1/2" TEE 3000# SW		"	"	
2	1 1/2" X 1" RED INSERT 3000#		"	"	
2	1 1/2" 180° KF FLG SW		"	"	
2	FLANGING GASKET CG				
4	3/8" X 1/2" BOLT STUD		A-193	B7	
8	3/8" HEX HD NUTS		A-194	ZH	
1	1 1/2" GLOBE VALVE MK-130				
22	1 1/2" SCH 80 CS SABLE PIPE		A-106	B	
21	1" SCH 80 CS SABLE PIPE		A-106	B	
1	2" F0-6021				
1	1" CHECK VALVE MK-223				

START UP NO. 2-83 COST CODE: INSULATION CLASS: THICK: 1

WELDING QC/QA REQ'MENTS
 PT-N-LH OR
 WELDING PROCEDURE: P-T R5
 PRE WELD-INSP: AS REQ'D
 WELDING CONTROL ROD: 12-9 D
 HELIC. ARC ROD: E-70S-2 - 1/8" welds
 STICK ROD: E-7018 - 1/8" 40000
 PRE-HEAT F°: 60
 N.D.T.: 1/16" DYE PENE X-RAY
 MAX. INTER: 1/16" INTER PURGE: 1/16" 1-10-76

REFERENCE
 P&I.D. NO.: M-458
 PIPING DWG.: M-331 & M-176
 AREA No. 20 ELEV. 27'-0"
 UNIT No.: TWIO
 BLDG.: ALX

HANGER TYPE: EB-8 (SEISMIC)
 DWG. NO.: GB-22 (THERMAL)

QUALITY CONTROL DATA
 PIPE HEAT NOS.: GB-22 - NON-NUC-
 FITTINGS HEAT NOS.: EB-8 - CRITICAL
 VALVES HEAT NOS.:
 QC SYSTEM NO.:

ACCEPTANCE DATES PIPE SYS. BY: HANGERS BY:

REV.	DATE	DESCRIPTION	DRN.	CHK.	APPR.
0	3-15-85	AS BUILT PER DEN FSK-MP-4315-1A DCR 85-N-51 (FCR 79-1062)	FMA	MPS	WCH/TKR
1	9-29-75	REV DIM'S & REV LINE FIG/AS BUILT ISSUE TO EREC.	MM	DY	YEA

BECHTEL CORP
 GAITHERSBURG, MARYLAND

CALVERT CLIFFS UNIT 1 & 2
 BALTIMORE GAS & ELECTRIC CO.
 ELECTRIC ENGINEERING DEPARTMENT

GB-22 - NON-NUC. / EB-8 - CRITICAL
 MISC. MAIN STEAM DRAIN
 PIPING

JOB NO. 6750 FSK-MP-4315 DWG. NO. 1 REV.

FC NO. QTY. DESCRIPTION HEAT NO. ASTM NO. GRD STR. REQUISITION

BILL OF MATERIAL

PDR RIDS

89 01050389

