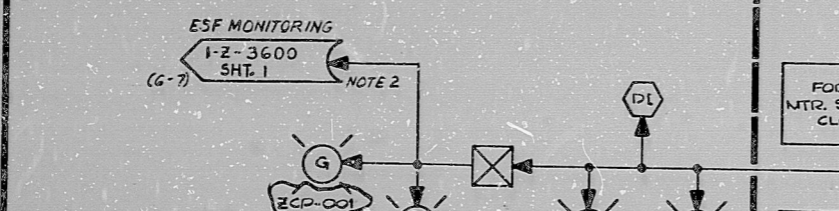


**NOTES:**

1. THIS LOGIC IS APPLICABLE TO THE FOLLOWING:

ECW TW SCREEN	CONTROL ELEC. SYMBOL LOCATION	TRAIN	LEVEL SWITCH	ELECTRICAL REF. DVG. NO.	MECHANICAL EQUIP. NO.	PRESSURE SWITCH	MOTION SWITCH
NO. 1A	ZCP-001	A	LDS-6913	I-E-6954	R28-TW101A	PSH-6933	ZS-6910
NO. 1B	ZCP-002	B	LDS-6923	I-E-6955	R28-TW101B	PSH-6941	ZS-6920
NO. 1C	ZCP-003	C	LDS-6933	I-E-6956	R28-TW101C	PSH-6943	ZS-6930

2. TRAIN B ESF MONIT. LOGIC (I-Z-3601 SHT. 1)  
 TRAIN C ESF MONIT. LOGIC (I-Z-3602 SHT. 1)
3. SCREEN "NO MOTION" ALARM AND "MOTOR OVERLOAD OR CONTROL POWER NOT AVAILABLE" ALARM TO BE COMBINED IN ONE WINDOW.



**GENERAL NOTE:**

THIS DRAWING REPRESENTS FUNCTIONAL REQUIREMENTS ONLY. REFER TO ELECTRICAL REFERENCE DRAWING FOR HARDWARE IMPLEMENTATION.

NO.	DATE	DESCRIPTION	BY	CHK	ENG	PROJ	NO.	DATE	DESCRIPTION	BY	CHK	ENG	PROJ	NO.	DATE	DESCRIPTION
DW77		REVISED AS NOTED	PS	HP	MM	JA										
C177X		ADDED PRESS. SWITCH & PRESS. AS NOTED	PS	HP	MM	JA										
D277A		ADD REF. DVG. NOS.	PS	HP	MM	JA										
A277		INITIAL REVIEW	PS	HP	MM	JA										

PKG. NO. 096 AREA 102

DRAWING TITLE		CONTRACT NO.	SCALE
ECW TRAVELING WATER SCREEN		CR-0241	N/A
LOGIC DIAGRAM		DRAWING NO.	CR-28
SYSTEM: R-28		DWG. NO.	I-Z-3202F
		SHEET	3

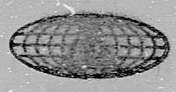
**SOUTH TEXAS PROJECT**

**Brown & Root Inc.**  
 ENGINEERS-CONSTRUCTORS  
 HOUSTON, TEXAS

DATE: SEP 13 1979

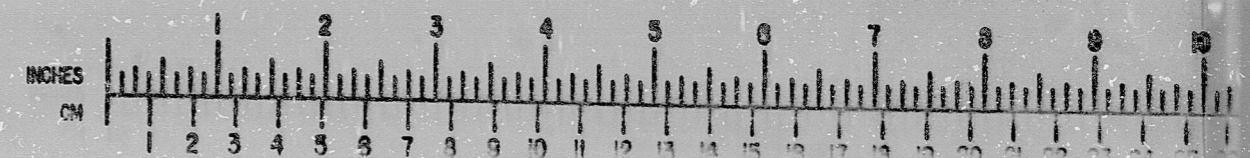
STATUS:  PRELIMINARY  REVIEW  USE  CONSTRUCTION

INFORMATION  
 THIS DOCUMENT IS  
 SUBJECT TO REVISION  
 WITHOUT NOTIFICATION  
 TO THE USER OF THIS  
 COPY  
 TERA  
 APERTURE  
 CARD



**BROWN & ROOT INC.**  
 MICROFILM SERVICES

WEDNESDAY, SEPT. 13 1979



11  
8.5  
8.5  
11  
17

11  
8.5  
8.5  
11  
17

RIDS

8120906

