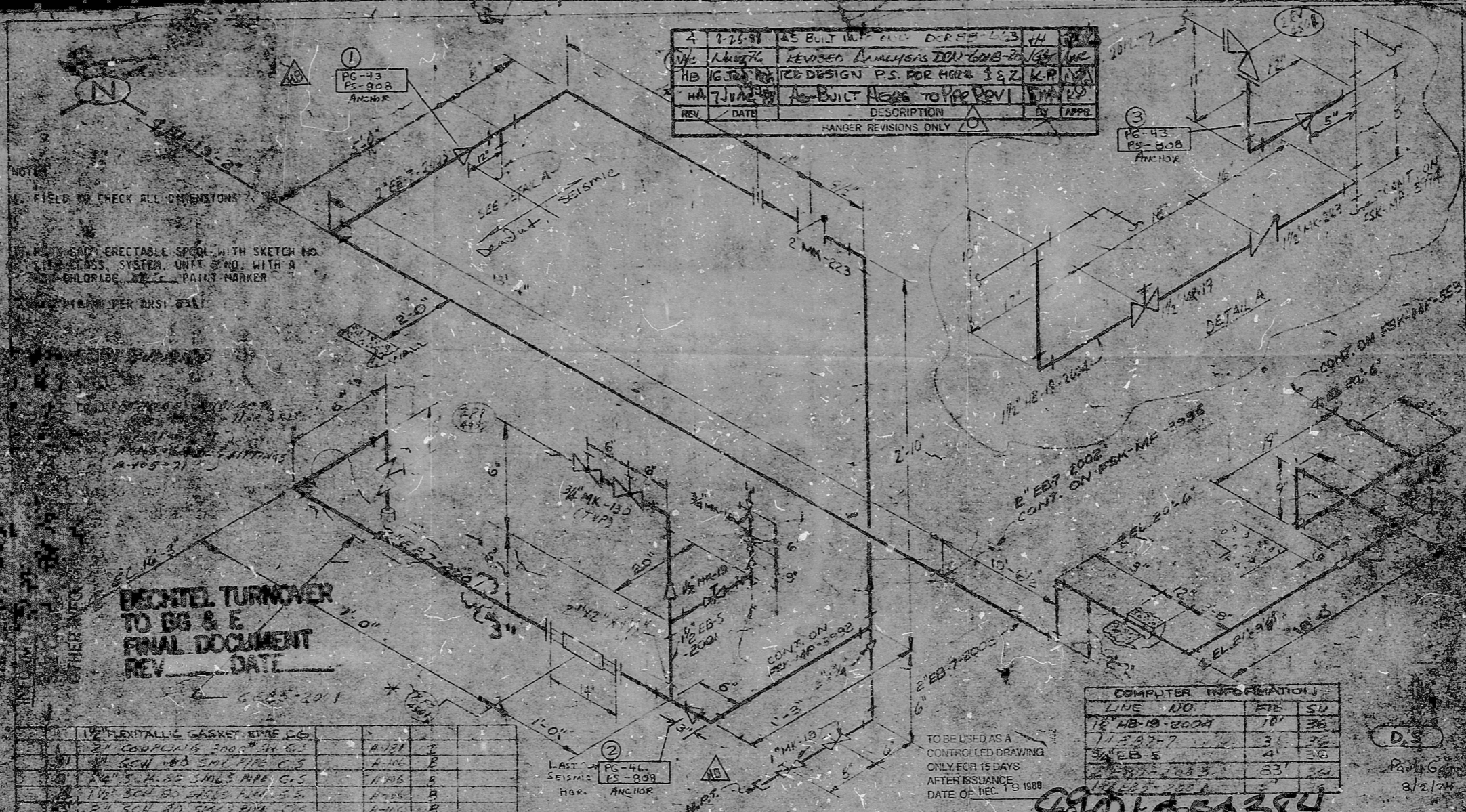


REV	DATE	DESCRIPTION	BY	APPROV
1	9-25-91	AS BUILT W/ P. 111 DCR 99-223	HH	
2	11-15-91	REVISED ANALYSIS FOR 6MB-20	MC	
3	12-15-91	DESIGN P.S. FOR HORIZ. 1 & 2	K.P.	
4	1-15-92	AS-BUILT ASGS TO P.P. REV. 11/15/91		



ITEM	DESCRIPTION	QTY	UNIT	REMARKS
1	1/2" FLUENTIAL GASKET EDGE EG			
2	2" COPPER 1/4" 2000 4" W.G.			
3	1/2" GALV. 405 SMC PIPE 10'S			
4	3/4" S. H. 55 SMC'S PIPE 10'S			
5	1 1/2" SCH 80 SMC'S PIPE 10'S			
6	2 1/2" SCH 80 SMC'S PIPE 10'S			
7	1/2" NIPPLE VALVE 1/2" 20'S			
8	1/2" NIPPLE VALVE 1/2" 20'S			
9	1/2" NIPPLE VALVE 1/2" 20'S			
10	1/2" NIPPLE VALVE 1/2" 20'S			
11	1/2" NIPPLE VALVE 1/2" 20'S			
12	1/2" NIPPLE VALVE 1/2" 20'S			
13	1/2" NIPPLE VALVE 1/2" 20'S			
14	1/2" NIPPLE VALVE 1/2" 20'S			
15	1/2" NIPPLE VALVE 1/2" 20'S			
16	1/2" NIPPLE VALVE 1/2" 20'S			
17	1/2" NIPPLE VALVE 1/2" 20'S			
18	1/2" NIPPLE VALVE 1/2" 20'S			
19	1/2" NIPPLE VALVE 1/2" 20'S			
20	1/2" NIPPLE VALVE 1/2" 20'S			

START UP NO. 2-36	COST CODE	INSULATION CLASS	THICK
WELDING QC/QA REQUIREMENTS		REFERENCE	
WELDING PROCEDURE	PRE WELD. INSP.	WELDING CONTROL	MELIC. ARC ROD
STICK ROD	PRE-HEAT F°	N.D.T.	MAX. INTER. NC
QUALITY CONTROL DATA			
DATE	BY	DATE	BY

LINE NO.	FILE	SU
10	10	36
11	3	36
12	4	36
13	63	36

BECHTEL CORP
 CALVERT CLIFFS UNIT 1 & 2
 BALTIMORE GAS & ELECTRIC CO.
 ELECTRIC ENGINEERING DEPARTMENT

DATE OF REC. 8/2/74

PDR RIDS

89 01050384

