

NOTES:

1. THIS LOGIC IS APPLICABLE TO THE FOLLOWING:

	TRAIN A	TRAIN B	TRAIN C
ECW STRAINER	R28-SPI01A	R28-SPI01B	R28-SPI01C
ECW STRAINER O/R HIGH	PDS-6859	PDS-6859	PDS-6879
ALARM LOCATION	ECP-001	ECP-002	ECP-003
ELECTRICAL REF. DVG. NO.	1E-6961	1E-6962	1E-6963

GENERAL NOTE:

THIS DRAWING REPRESENTS FUNCTIONAL REQUIREMENTS ONLY. REFER TO ELECTRICAL REFERENCE DRAWING FOR HARDWARE IMPLEMENTATION.

NO.	DATE	DESCRIPTION	BY	CHK	PROJ	PROJ	ENG	MGR	DATE
0477		REVISED AS NOTED	PS	HP	AM				
0478		ADDED TRIPPED STATUS	PS	HP	AM				
0479		ADD REF DVG NOS.	PS	HP	AM				
0480		INITIAL REVIEW	PS	HP	AM				

Brown & Root Inc.
ENGINEERS-CONSTRUCTORS
HOUSTON, TEXAS

SOUTH TEXAS PROJECT

DRAWING TITLE
ESSENTIAL COOLING WATER STRAINER
LOGIC DIAGRAM
SYSTEM: R-28

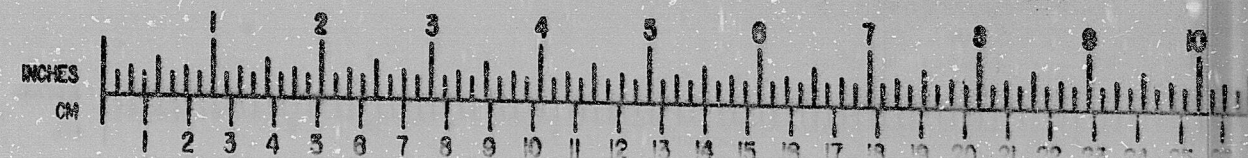
CONTRACT NO. SCALE
CR-0241 N/A
DRAWING NO. 44-28
1-2-3202F
SHT. 4

TERA APERTURE CARD
INFORMATION
THIS DOCUMENT IS SUBJECT TO REVISION WITHOUT NOTIFICATION TO THE USER OF THIS COPY

MICROFILMED JUL 18 1977



BROWN & ROOT INC.
MICROFILM SERVICES



WEDNESDAY, SEPT. 13 1979

MICROFILMED JUN 09 1976

RIDS

8112100104

