



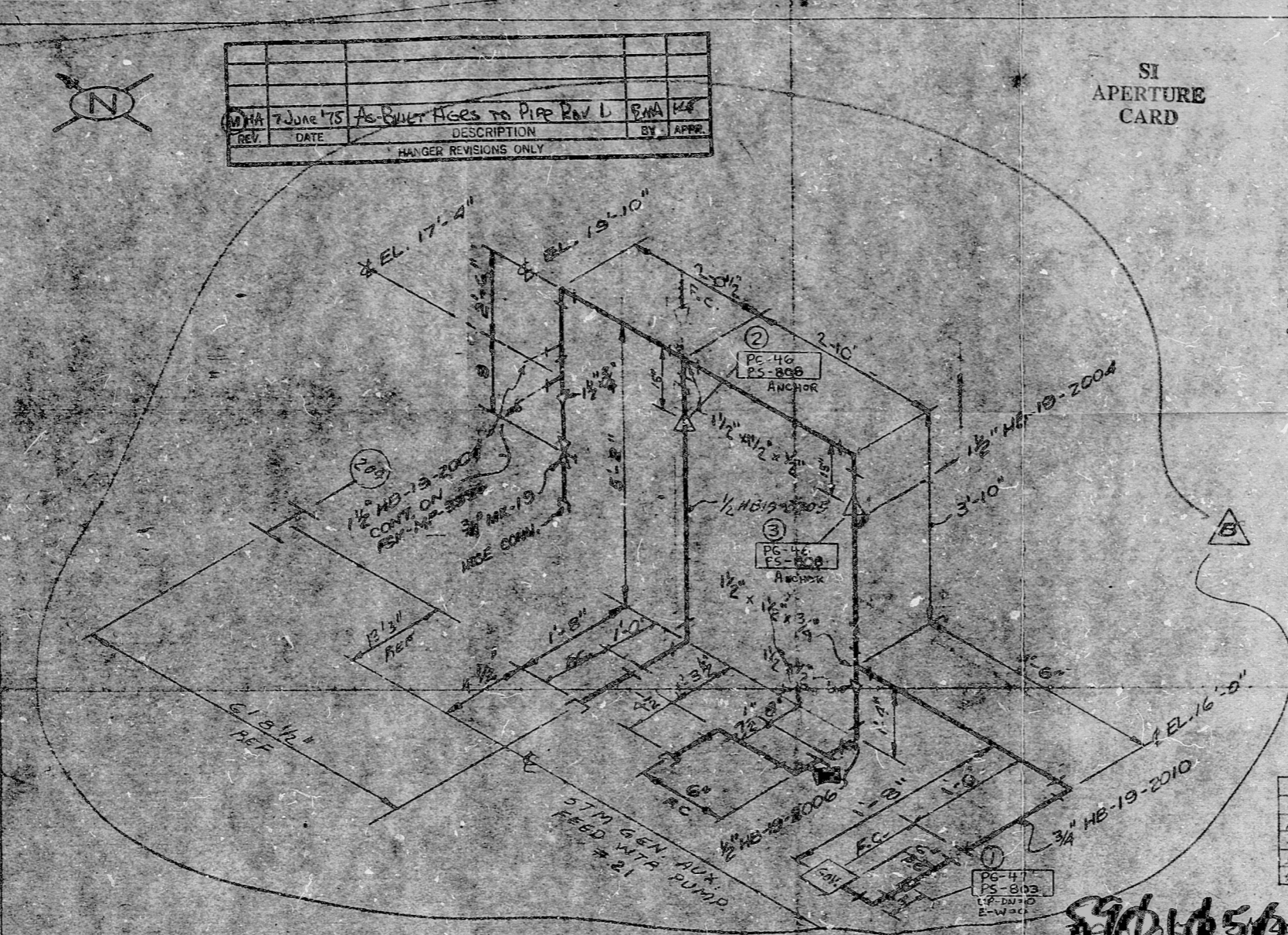
REV.	DATE	DESCRIPTION	BY	APPR.
1	7 JUNE 75	AS BUILT LINES TO PIPE RUN L	E.M.A.	K.H.
HANGER REVISIONS ONLY				

SI  
APERTURE  
CARD

NOTES

1. FIELD TO CHECK ALL DIMENSIONS
- 2.
3. MARK EACH EFFECTABLE SPOOL WITH SKETCH NO., LINE CLASS, SYSTEM, UNIT & NO. WITH A NON-CHLORIDE ~~WHITE~~ PAINT MARKER
4. ALL PIPING PER ANSI B31
- 5.
- 6.
7. O. C. LEVEL "D"
8. OPER. COND. SEE SPEC 6750-M-601 LATEST REV.
9. ALT. MATEL: FITTINGS A-181-6A II  
A-103-7I  
A-105-6A II

This drawing and the design it covers are the property of BECHTEL. They are hereby loaned to the borrower's company for their use only and shall not be reproduced, copied, loaned, transferred, or otherwise used in any manner without the written consent of BECHTEL.



FOR INFORMATION ONLY  
THIS SEPIA IS FOR HANGER  
INFORMATION ONLY.  
SEE ORIGINAL FOR ALL  
OTHER INFORMATION.

BECHTEL TURNOVER  
TO BG & E  
FINAL DOCUMENT  
REV. HA DATE 2-27-76

COMPUTER INFORMATION		
LINE NO	FTS	SD
1/2 HB-19-2004	12	36
3/4 HB19-2010	5	36
1/2 HB19-2006	5	36
1/2 HB19-2005	8	36

67045375 (S,D) Paul Goguen 7/1/74

QTY	DESCRIPTION	UNIT	REQD
25	1/2 SBRN FLUOROPOLYMER AD NUT	A-89 2H	
12	1/2 VERT. BOCT STUD	A-193 87	
2	1/2 FLUOROPOLYMER WASHER STUD		
2	1/2 FLUOROPOLYMER WASHER STUD		
4	1/2 FLUOROPOLYMER WASHER STUD		
2	1/2 FLUOROPOLYMER WASHER STUD		
2	1/2 FLUOROPOLYMER WASHER STUD		
2	1/2 FLUOROPOLYMER WASHER STUD		
2	1/2 FLUOROPOLYMER WASHER STUD		
2	1/2 FLUOROPOLYMER WASHER STUD		

START UP NO. 2-36	QST CODE	INSULATION CLASS	THICK
WELDING QC/QA REQUIREMENTS		REFERENCE	
WELDING PROCEDURE: A-181-6A II	PRE WELDING: Re 0	WELDING CONTROL ROD: Roy 2	STICK ROD: E 7018
PREHEAT: 60°	POST WELDING: DYE PENETRATION	INTERFEROMETRIC	
QUALITY CONTROL DATA			
PREHEAT	FITTING HEAT	VALVE HEAT	POST WELDING

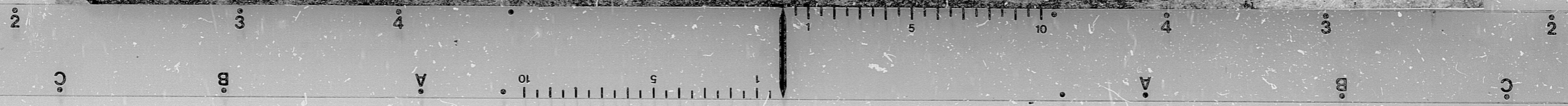
REV.	DATE	DESCRIPTION	DRN.	CHK.	APPR.
1	5-22-74	Rev. Line No - As BUILT			
2	7-18-74	REVISED ROUTING / RESS. ELEC.			
3	9-11-74	ISSUE FOR ERECTION			

**BECHTEL CORP**  
GAITHERSBURG, MARYLAND

**CALVERT CLIFFS UNIT 1 & 2**  
BALTIMORE GAS & ELECTRIC CO.  
ELECTRIC ENGINEERING DEPARTMENT

HB-19 (MAN W/CLASH)  
CONDENSATE RETURN LINES  
FEED WATER PUMP #21

JOB NO.	DWG. NO.	REV.
6750	FSK-MP-399 & HA	1



PDR RIDS

8901050375

