

NOTES:
 1. THIS LOGIC IS APPLICABLE TO THE FOLLOWING:

	TRAIN A	TRAIN B	TRAIN C
ECW PUMP DISCHG. VALV.	EW-121	EW-137	EW-151
CONTROL RM. SWITCH LOG.	ZCP-001	ZCP-002	ZCP-003
ELECTRICAL REF. DVG. NO.	1E-6951	1E-6952	1E-6953
ECW PUMP DISCH. PRESS.	PSL-6880	PSL-6885	PSL-6890

2. VALVE SERVICE REQUIRES THAT VALVE MOTOR WILL NOT TRIP ON MOTOR OVERLOAD.
 3. TRAIN B ESF MONIT. LOGIC I-Z-3601 SHT. 1
 TRAIN C ESF MONIT. LOGIC I-Z-3602 SHT. 2

GENERAL NOTE:
 THIS DRAWING REPRESENTS FUNCTIONAL REQUIREMENTS ONLY. REFER TO ELECTRICAL REFERENCE DRAWING FOR HARDWARE IMPLEMENTATION.

NO.	DATE	DESCRIPTION	BY	CHK	PROJ	ENG	MGR	DATE	DESCRIPTION	BY	CHK	PROJ	ENG	MGR	DATE	DESCRIPTION
D 677		REVISED AS NOTED														
C 1974		REVISED AS NOTED														
B 2176		AS NOTED														
A 2176		INITIAL REVIEW														

PKG. NO. 096 AREA 102

SOUTH TEXAS PROJECT

DRAWING TITLE: ESSENTIAL COOLING WATER PUMP DISCHARGE VALVE LOGIC DIAGRAM SYSTEM: R-28

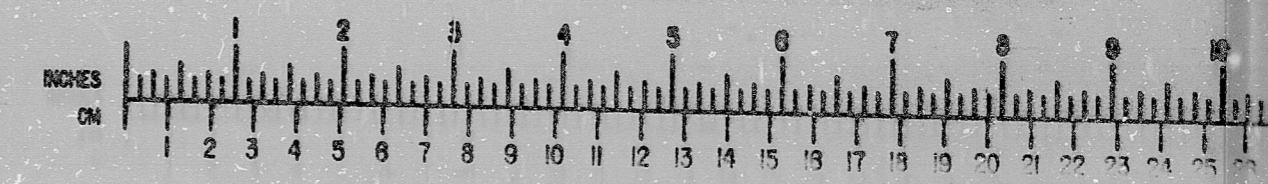
CONTRACT NO. SCALE: CR-0241 N/A

DRAWING NO. 1E-28 SHT. 1

DATE: [] [] []

STATUS: [] PRELIMINARY [] REVIEW [] USE [] CONSTRUCTION

BROWN & ROOT INC. MICROFILM SERVICES



WEDNESDAY, SEPT. 12 1979

INFORMATION
 THIS DOCUMENT IS SUBJECT TO REVISION WITHOUT NOTICE TO THE USER OF THIS COPY

TERA APERTURE CARD

REPRODUCTION JUL 13 1977

MICROFILMED JUN 9 1978

RIDS

811210010

