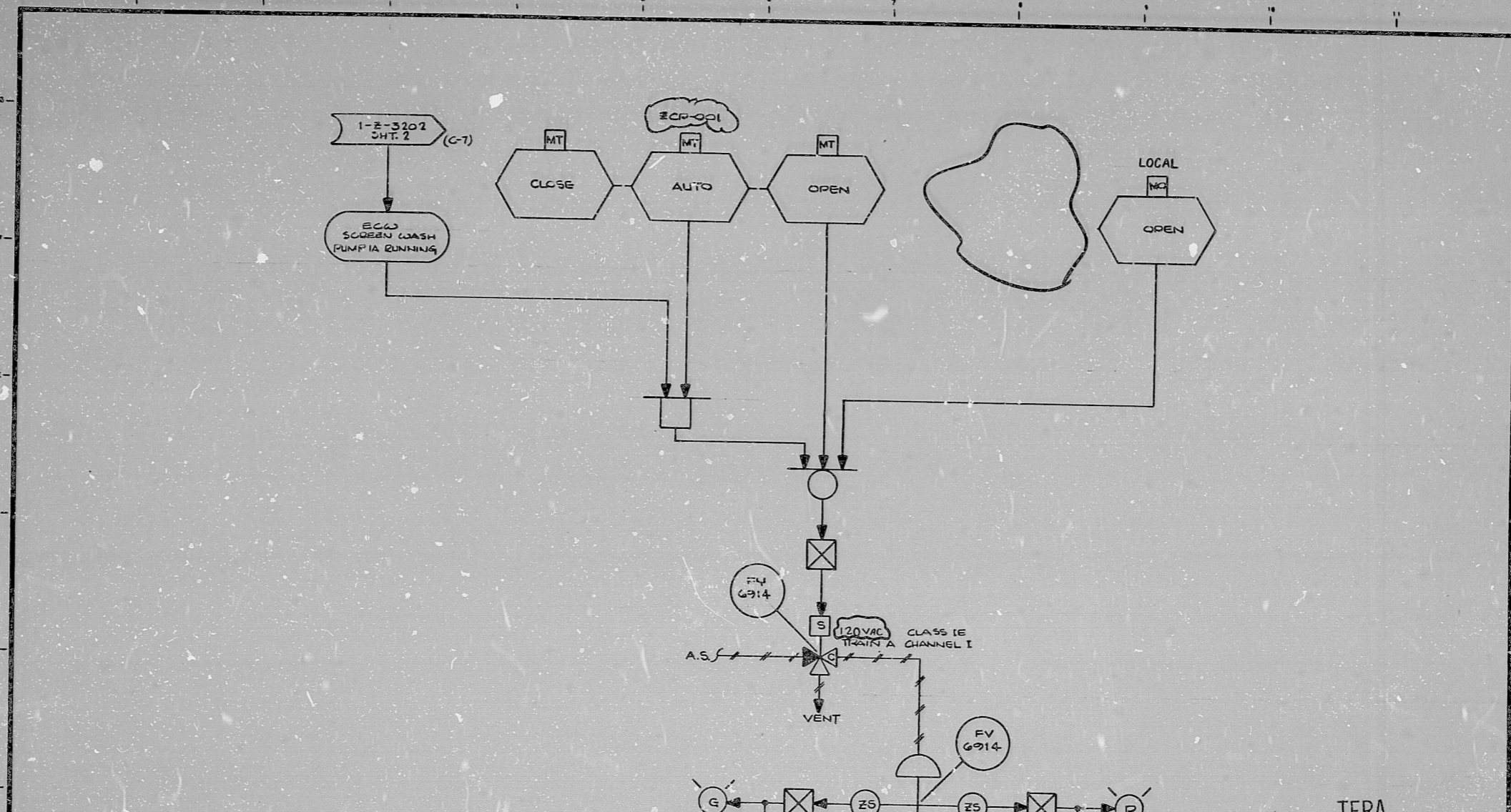


17"
11"
8.5"
8.5"
11"
17"

17"
11"
8.5"
8.5"
11"
17"



NOTES:
1. THIS LOGIC IS APPLICABLE TO THE FOLLOWING:

ECV SCREEN	VALVE	SOLENOID VALVE	TRAIN	CONTROL ROOM SWITCH LOCATION	PLC ELEM. NO.
1A	FV-6914	FV-6914	A	ZCP-001	1-E-6933
1B	FV-6924	FV-6924	B	ZCP-002	1-E-6940
1C	FV-6934	FV-6934	C	ZCP-003	1-E-6941

GENERAL NOTE:
THIS DRAWING REPRESENTS FUNCTIONAL REQUIREMENTS ONLY. REFER TO ELECTRICAL REFERENCE DRAWING FOR HARDWARE IMPLEMENTATION.

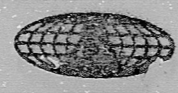
NO.	DATE	DESCRIPTION	BY	CHK	PROJ. ENGR.	PROJ. MGR.	DATE	DESCRIPTION	BY	CHK	PROJ. ENGR.	PROJ. MGR.	DATE
D 4/77		REVISED AS NOTED											
C 12/76		POWER SUPPLY SWITCH & ALARM SIGNAL											
B 2/76		ADD REF. ENG. NOS.											
A 2/76		INITIAL REVIEW											

Brown & Root Inc.
ENGINEERS-CONSTRUCTORS
HOUSTON, TEXAS

SOUTH TEXAS PROJECT

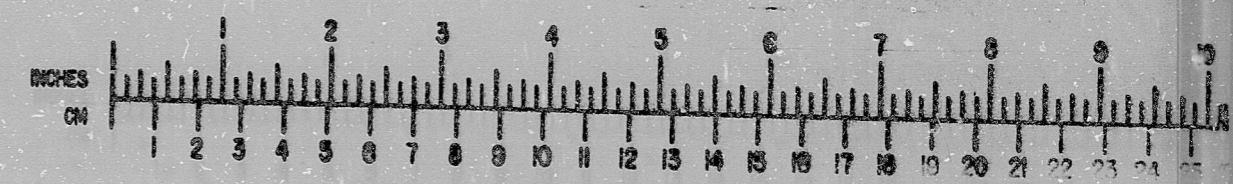
PKG. NO. 096 AREA 102
DRAWING TITLE: ECV SCREEN WASH VALVES LOGIC DIAGRAM
CONTRACT NO. SCALE: CR-0241 N/A
DRAWING NO. R-28
SYSTEM: R-28
SET: 3204F

INFORMATION
THIS DOCUMENT IS SUBJECT TO REVISION WITHOUT NOTIFICATION TO THE USER OF THIS COPY
JUL 13 1977



BROWN & ROOT INC.
MICROFILM SERVICES

WEDNESDAY, SEPT 12 1979



MICROFILMED JUN 1977

RIDS

811210d09

