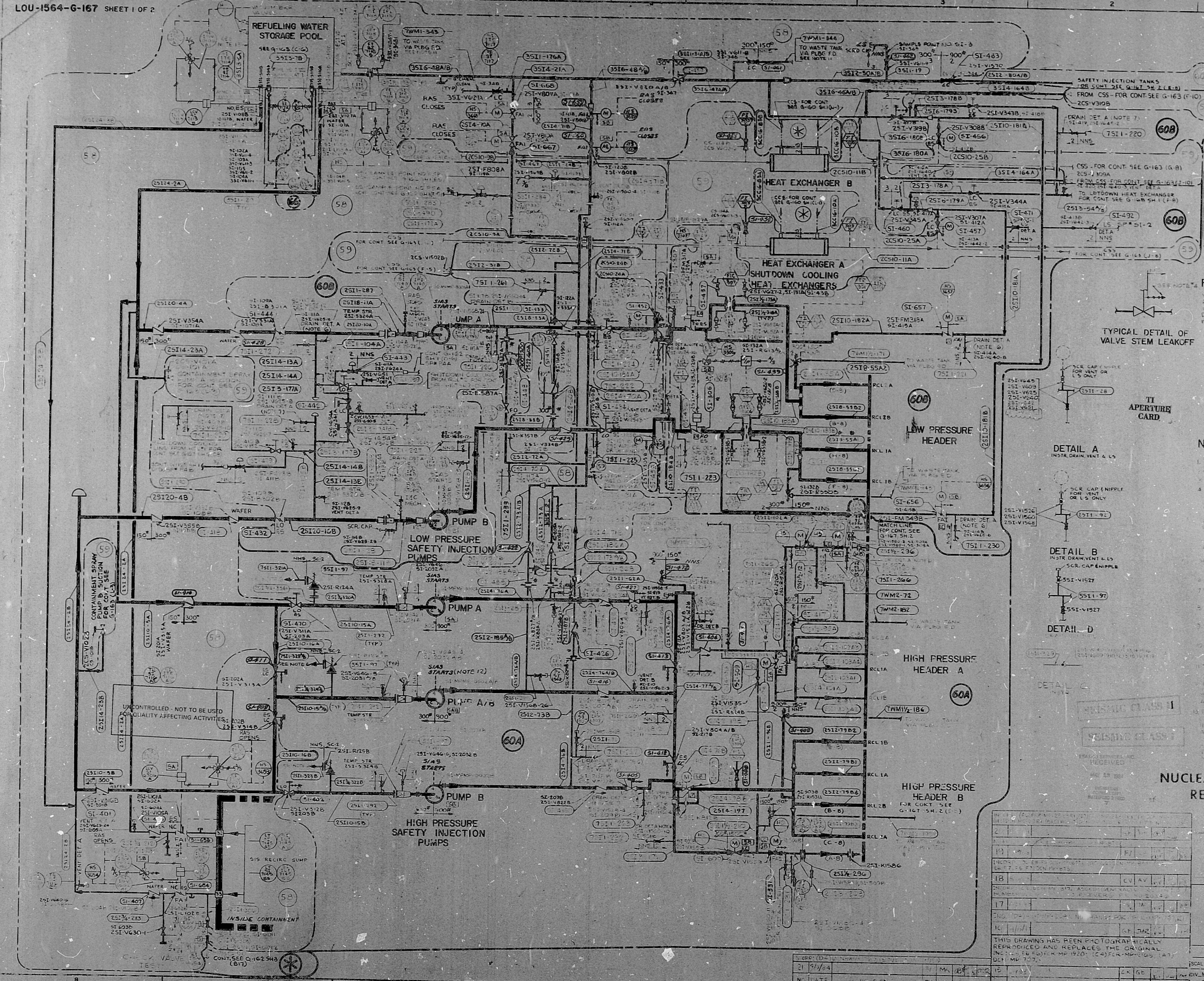


22"
17"
11"
8.5"
11"
17"
22"

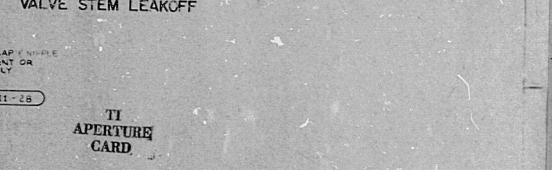
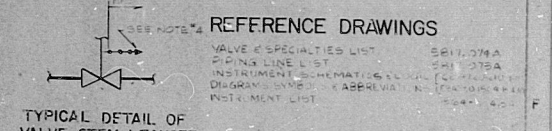


SYSTEM TRANSFER REVISION

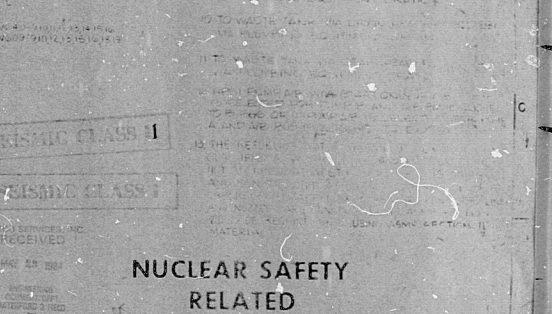
THIS DRAWING HAS BEEN MARKED UP TO SHOW THE BOUNDARIES FOR SYSTEMS TRANSFERRED TO LOCAL PLANT STAFF. NO WORK IS TO BE PERFORMED WITHIN THE INDICATED BOUNDARIES PRIOR TO LOCAL APPROVAL.

REVISION	BY	CHK	SYSTEM TRANSFERRED
ST 0	MM	JH	600 MW SYSTEM
ST 1	JH	JH	59 MW SYSTEM
ST 2	JH	JH	58 MW SYSTEM
ST 3	JH	JH	60A 60B SYSTEM
ST 4	RR	MM	66 MW SYSTEM

THIS DRAWING IS A DIAGNOSTIC REPRESENTATION OF PIPING AS PERFORMED. IT IS NOT NECESSARILY REFERENCE TO LINE AND VALVE NUMBERS. LINE POINT DRAIN, VENT, ETC. THEY DO NOT REQUIRE THE PIPING DESIGN AUTHORITY FROM SYSTEM DESIGN. INCLUDING PIPING REQUIREMENTS AND PIPING DESIGN. DETAILS ARE PRESENTED IN SEPARATE DRAWINGS. SEE G-167 (1) TO (10).



- NOTES
1. THIS DRAWING IS A DIAGNOSTIC REPRESENTATION OF PIPING AS PERFORMED. IT IS NOT NECESSARILY REFERENCE TO LINE AND VALVE NUMBERS. LINE POINT DRAIN, VENT, ETC. THEY DO NOT REQUIRE THE PIPING DESIGN AUTHORITY FROM SYSTEM DESIGN. INCLUDING PIPING REQUIREMENTS AND PIPING DESIGN. DETAILS ARE PRESENTED IN SEPARATE DRAWINGS. SEE G-167 (1) TO (10).
 2. THIS DRAWING IS A DIAGNOSTIC REPRESENTATION OF PIPING AS PERFORMED. IT IS NOT NECESSARILY REFERENCE TO LINE AND VALVE NUMBERS. LINE POINT DRAIN, VENT, ETC. THEY DO NOT REQUIRE THE PIPING DESIGN AUTHORITY FROM SYSTEM DESIGN. INCLUDING PIPING REQUIREMENTS AND PIPING DESIGN. DETAILS ARE PRESENTED IN SEPARATE DRAWINGS. SEE G-167 (1) TO (10).
 3. THIS DRAWING IS A DIAGNOSTIC REPRESENTATION OF PIPING AS PERFORMED. IT IS NOT NECESSARILY REFERENCE TO LINE AND VALVE NUMBERS. LINE POINT DRAIN, VENT, ETC. THEY DO NOT REQUIRE THE PIPING DESIGN AUTHORITY FROM SYSTEM DESIGN. INCLUDING PIPING REQUIREMENTS AND PIPING DESIGN. DETAILS ARE PRESENTED IN SEPARATE DRAWINGS. SEE G-167 (1) TO (10).
 4. THIS DRAWING IS A DIAGNOSTIC REPRESENTATION OF PIPING AS PERFORMED. IT IS NOT NECESSARILY REFERENCE TO LINE AND VALVE NUMBERS. LINE POINT DRAIN, VENT, ETC. THEY DO NOT REQUIRE THE PIPING DESIGN AUTHORITY FROM SYSTEM DESIGN. INCLUDING PIPING REQUIREMENTS AND PIPING DESIGN. DETAILS ARE PRESENTED IN SEPARATE DRAWINGS. SEE G-167 (1) TO (10).
 5. THIS DRAWING IS A DIAGNOSTIC REPRESENTATION OF PIPING AS PERFORMED. IT IS NOT NECESSARILY REFERENCE TO LINE AND VALVE NUMBERS. LINE POINT DRAIN, VENT, ETC. THEY DO NOT REQUIRE THE PIPING DESIGN AUTHORITY FROM SYSTEM DESIGN. INCLUDING PIPING REQUIREMENTS AND PIPING DESIGN. DETAILS ARE PRESENTED IN SEPARATE DRAWINGS. SEE G-167 (1) TO (10).
 6. THIS DRAWING IS A DIAGNOSTIC REPRESENTATION OF PIPING AS PERFORMED. IT IS NOT NECESSARILY REFERENCE TO LINE AND VALVE NUMBERS. LINE POINT DRAIN, VENT, ETC. THEY DO NOT REQUIRE THE PIPING DESIGN AUTHORITY FROM SYSTEM DESIGN. INCLUDING PIPING REQUIREMENTS AND PIPING DESIGN. DETAILS ARE PRESENTED IN SEPARATE DRAWINGS. SEE G-167 (1) TO (10).
 7. THIS DRAWING IS A DIAGNOSTIC REPRESENTATION OF PIPING AS PERFORMED. IT IS NOT NECESSARILY REFERENCE TO LINE AND VALVE NUMBERS. LINE POINT DRAIN, VENT, ETC. THEY DO NOT REQUIRE THE PIPING DESIGN AUTHORITY FROM SYSTEM DESIGN. INCLUDING PIPING REQUIREMENTS AND PIPING DESIGN. DETAILS ARE PRESENTED IN SEPARATE DRAWINGS. SEE G-167 (1) TO (10).
 8. THIS DRAWING IS A DIAGNOSTIC REPRESENTATION OF PIPING AS PERFORMED. IT IS NOT NECESSARILY REFERENCE TO LINE AND VALVE NUMBERS. LINE POINT DRAIN, VENT, ETC. THEY DO NOT REQUIRE THE PIPING DESIGN AUTHORITY FROM SYSTEM DESIGN. INCLUDING PIPING REQUIREMENTS AND PIPING DESIGN. DETAILS ARE PRESENTED IN SEPARATE DRAWINGS. SEE G-167 (1) TO (10).
 9. THIS DRAWING IS A DIAGNOSTIC REPRESENTATION OF PIPING AS PERFORMED. IT IS NOT NECESSARILY REFERENCE TO LINE AND VALVE NUMBERS. LINE POINT DRAIN, VENT, ETC. THEY DO NOT REQUIRE THE PIPING DESIGN AUTHORITY FROM SYSTEM DESIGN. INCLUDING PIPING REQUIREMENTS AND PIPING DESIGN. DETAILS ARE PRESENTED IN SEPARATE DRAWINGS. SEE G-167 (1) TO (10).
 10. THIS DRAWING IS A DIAGNOSTIC REPRESENTATION OF PIPING AS PERFORMED. IT IS NOT NECESSARILY REFERENCE TO LINE AND VALVE NUMBERS. LINE POINT DRAIN, VENT, ETC. THEY DO NOT REQUIRE THE PIPING DESIGN AUTHORITY FROM SYSTEM DESIGN. INCLUDING PIPING REQUIREMENTS AND PIPING DESIGN. DETAILS ARE PRESENTED IN SEPARATE DRAWINGS. SEE G-167 (1) TO (10).



NUCLEAR SAFETY RELATED

THIS DOCUMENT IS THE PROPERTY OF EBASCO SERVICES INCORPORATED. IT IS LOANED TO YOU AND YOUR COMPANY. IT IS TO BE RETURNED TO EBASCO SERVICES INCORPORATED AT THE END OF THE LOAN PERIOD. IT IS NOT TO BE REPRODUCED OR TRANSMITTED IN ANY FORM OR BY ANY MEANS, ELECTRONIC OR MECHANICAL, INCLUDING PHOTOCOPYING, RECORDING, OR BY ANY INFORMATION STORAGE AND RETRIEVAL SYSTEM.

LOUISIANA POWER & LIGHT COMPANY
WATERFORD S.E.S. UNIT NO. 3
1977-1985 MW INSTALLATION

FLOW DIAGRAM
SAFETY INJECTION SYSTEM
EBASCO SERVICES INCORPORATED

NO.	DATE	BY	CHK	APP	NO.	DATE	BY	CHK	APP
1	11/1/74	JH	JH	JH	1	11/1/74	JH	JH	JH
2	11/1/74	JH	JH	JH	2	11/1/74	JH	JH	JH
3	11/1/74	JH	JH	JH	3	11/1/74	JH	JH	JH
4	11/1/74	JH	JH	JH	4	11/1/74	JH	JH	JH
5	11/1/74	JH	JH	JH	5	11/1/74	JH	JH	JH
6	11/1/74	JH	JH	JH	6	11/1/74	JH	JH	JH
7	11/1/74	JH	JH	JH	7	11/1/74	JH	JH	JH
8	11/1/74	JH	JH	JH	8	11/1/74	JH	JH	JH
9	11/1/74	JH	JH	JH	9	11/1/74	JH	JH	JH
10	11/1/74	JH	JH	JH	10	11/1/74	JH	JH	JH

SCALE: NONE

DATE: 11/1/74

LOU-1564-G-167 SHEET 1 OF 2

8410090278

PDR RIDS

